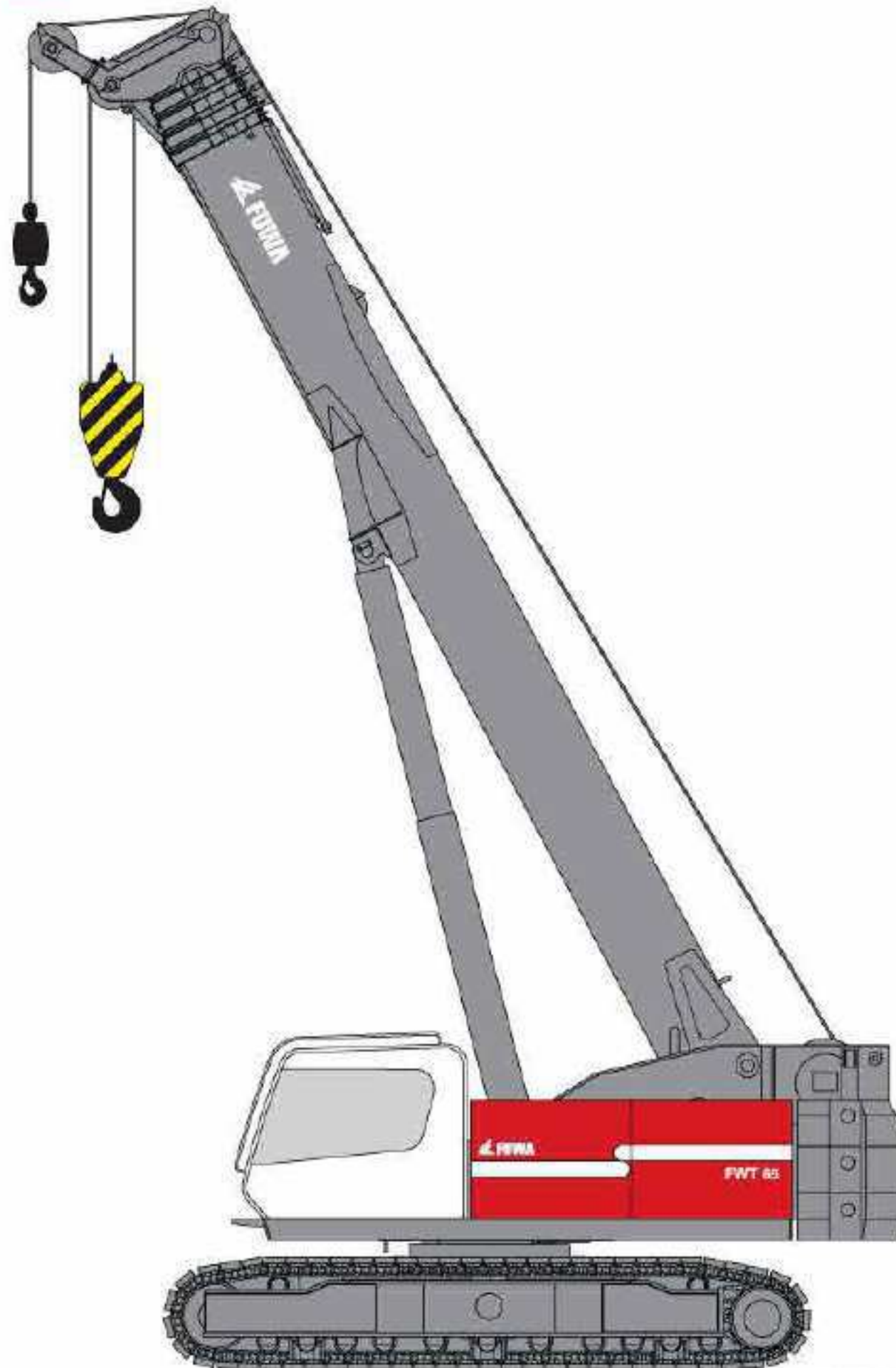


FWT65

HYDRAULIC CRAWLER CRANE



FUWA HEAVY INDUSTRY CO.,LTD.

Product characteristics shown as below

- Unique side-by-side winch configuration allowing two powerful winches within same short swing radius of the machine.
- 22mm hoist cables on both winches for fast and powerful hoist with less reevings.
- U-shape boom made of imported 900 grade steel for optimized strength.
- Two oversized telescopic cylinders and oversized cable system for sturdy telescoping.
- Pin option to lock boom when first section is out for foundation jobs.
- Smart engineered box type upper structure for great strength and low center of gravity.
- Optional link-type undercarriage for smooth and safe travelling with load and long life-time.
- Life Cab, excellent vision on job and machine, 20% larger interior and door entrance, easy maintenance flat windows.
- Modular design high efficient hydraulics, simple electronics and easy maintenance.
- All hydraulic functions can be accurately operated simultaneously with low engine rpm.
- Self-assembling counterweight configuration
- Optional extendable (7 - 14m) fly jib.
- Optional 2m short jib for complex construction and foundation jobs.

Technical Data

Items	Unit	Data
Max.rated lifting capacity	t	65t
Main boom length	m	10.8-38
Boom derricking angle	°	-3~83
Jib length	m	8/14 (8+6)
Angle between jib and main boom	°	0/20/40
Rope speed	m/min	116
Swing speed	r/min	0~1.96
Travel speed	Km/h	0~1.26 / 0~2.26
Rope diameter	mm	22
Main/aux.winch rope length	m/m	200/130
Rated single line pull	t (kN)	7.5 (73.5)
Gradeability (boom retract, cabin at rear)	%	30
Crane mass	t	60t
Overall dimension	mm	12500 × 3260 × 3160
Ground bearing pressure	Mpa	0.07
Engine Cummins USA	Model	QSB6.7
	Kw/rpm	142/2200

Note: * speed may vary with the load.

FUWA HEAVY INDUSTRY CO.,LTD.