

XCMG QAY180

Construction machine brochure



Max. total rated lifting load



180t

Maximum boom length



62m

Full extended boom lifting height
+ jib



90m



Crane model series:

All-terrain

Truck crane

Crawler crane

XCMG QAY180

Next International

Next International Equipment is a professional company which operates in the domestic sales and export of construction machinery and parts. We have years of experience selling xcmg products through different companies. The company has self-managerial import & export authority, and can independently conduct the import and export business of construction machinery products.

XCMG

Since its foundation in March 1989, XCMG has always kept its vanguard role in the Chinese construction machinery industry for 25 years. At present, it ranks 5th in world construction machinery industry and 119nd among the top 500 Chinese enterprises. Being a large enterprise group with the largest scale, the most complete product type and series, and the highest competitiveness and influence in Chinese construction machinery industry.

XCMG QAY180 is a five axle all-terrain crane. QAY180 have two engines: Superstructure engine and carrier engine.

The specifically designed chassis combined with the eco-friendly engine greatly enhances overall driving performance.

Specially imported cables and bearings inside the boom make for the most reliable configuration possible.

Patented hydraulic system adopts many innovative technologies which can make the machine more energy saving and powerful.

The new brake technique can reduce 2/3 maintenance cost, and improve the travel safety.

The counterweight technique developed by XCMG can effectively improve the lifting performance by 30%.

The whole configuration includes 6-segment boom with the length of 62m and 3-segment jib with the length of 28m. 6 counterweight combinations can finish nearly 30000 working conditions.

XCMG QAY180

Technical specifications



Dimensions

Overall length	15770mm
Overall width	3000mm
Overall height	4000mm



Weight

Weight in travel state	60000kg
1 st axle load	12000kg
2 nd axle load	12000kg
3 rd axle load	12000kg
4 th axle load	12000kg
5 th axles load	12000kg



Power

Superstructure engine

TAD720VE

Engine rated output	162kw/2100rpm
Engine rated torque	850Nm/1500rpm

Superstructure engine

BF6M1013ECP

Engine rated output	173kw/2100rpm
Engine rated torque	906Nm/1400rpm

Carrier engine

OM460LA.E3A/1

Engine rated output	360kw/1800rpm
Engine rated torque	2200Nm/1300rpm



Travel

Max travel speed	80km/h
Min turning diameter	20m
Approach angle	16°
Departure angle	13°
Max grade ability	40%
Fuel consumption per 100km	80L



Lifting performance

Max total rated lifting load	180t
Min rated working radius	3000mm
Turning radius at swing table tail	4850mm
Outrigger longitudinal span	8.9m
Outrigger lateral span	8.3m
Parameters Max. load	5420Kn/m
Full- extended boom Max. load	3293Kn/m

Lifting height

Base boom	14m
Full extended boom	62.5m
Full extended boom + jib	86m

Boom length

Base boom	13.2m
Full extended boom	62m
Full extended boom + jib	90m



Working speed

Boom elevation time to max	80s
Boom telescoping time	500s
Max. swing speed	1.3rpm

XCMG QAY180

Lifting load charts for boom

Half outrigger based on 5.5, swing 360° and counterweight of 46t

Boom length	13.2	17.7	17.7	22.2	22.2	22.2	26.7	26.7	26.7	31.2	31.2	31.2	35.7	35.7	35.7	40.1	40.1	40.1	44.6	44.6	44.6	49.1	49.1	49.1	53.6	53.3	58.1	62
3	128																											
3.5	117	112	70.8																									
4	108	103	68	99	99	48																						
4.5	100	96	65.2	92	92	47.5	89	88	48.4																			
5	93	89	62.4	86	86	44.8	83	82	46.8	74	72.9	45.1																
6	82	79	58.6	76	76	39.7	74	73	42.7	67.2	67	41.6	57.6	55.8	39.6													
7	73	70	54.9	67	67	34.5	65	64	35.6	64	62	38.2	55.2	48.6	34.3	47.4	41.7	29.5										
8	58.9	58.1	50.9	57.1	57.9	31.4	57	56	34.8	56	55	32.3	53.1	45.7	29.1	43.3	39.7	26.7	37.2	34.3	29.4							
9	48.2	47.5	46.1	46.6	47.4	28.3	47	45.8	30.2	47.8	46.4	29.5	46.8	41.6	26.8	42	36.9	24.9	35.3	32.7	28	32.8	21.7	21.2				
10	40.4	39.9	41.2	39	39.7	27	39.4	38.3	29.5	40.2	38.8	28	41	39.5	25.4	38.3	34.1	23.3	33.1	30.6	26.1	31.1	20.6	20.2	25.9	20.9		
12		29.5	31	28.7	29.4	22.7	29.2	28.1	25.8	30	28.7	25.7	30.8	29.4	23.4	30.1	31.4	19.6	27.9	27.6	23.1	26.8	19.2	19.5	24.6	19	20.1	17.2
14		22.8	24.3	22.1	22.8	21.1	22.6	21.6	22.4	23.4	22.1	23.2	24.1	22.8	21	23.6	24.7	17	23.4	24.7	20.7	23.4	18	17.5	23.4	17.4	19.5	16.5
16				17.4	18.1	18.9	18	17	20	18.8	17.6	19.6	19.5	18.2	18.9	19	20.1	14.1	18.8	20.1	18.8	18.9	16	15.7	18.9	15.4	18.6	15.8
18				14	14.7	16.5	14.6	13.6	17.5	15.4	14.2	17.1	16.1	14.9	17.5	15.6	16.7	13.7	15.5	16.7	15.8	15.5	15.3	14	15.6	13.6	16	15.2
20							12	11	14.9	12.7	11.6	15.5	13.5	12.3	15.3	13	14.1	13.4	12.9	14	14.4	13	13.3	12.8	13.1	13.4	13.5	13.4
22							9.9	8.9	12.8	10.7	9.5	13.4	11.4	10.2	13.2	10.9	12	12.3	10.8	12	12.8	10.9	12.2	11.5	11.1	11.8	11.5	11.4
24										9	7.8	11.6	9.7	8.5	11.5	9.3	10.3	11.12	9.2	10.3	11.1	9.3	10.5	10.8	9.4	10.2	9.9	9.8
26										7.6	6.2	10.2	8.3	7.1	10.1	7.9	8.9	10	7.8	8.9	9.7	7.9	9.2	9.4	8.1	8.8	8.5	8.5
28													7.2	5.8	8.9	6.7	7.7	8.8	6.6	7.7	8.5	6.8	8	8.2	7	7.7	7.4	7.3
30													6.2	4.6	7.9	5.6	6.7	7.8	5.5	6.7	7.5	5.8	7	7.3	6	6.7	6.4	6.4
32																4.6	5.9	7	4.6	5.9	6.7	4.8	6.1	6.4	5.2	5.9	5.6	5.5
34																3.7	5.1	6.2	3.7	5.1	5.9	3.9	5.4	5.6	4.3	5.2	4.8	4.8
36																			2.9	4.5	5.2	3.2	4.7	5	3.6	4.5	4.1	4.1
38																			2.3	3.9	4.6	2.5	4.2	4.3	2.9	3.9	3.4	3.4
40																						1.9	3.6	3.7	2.3	3.4	2.8	2.9
42																							3	3.2	1.8	2.8	2.3	2.3
44																										2.3	1.8	1.8

XCMG QAY180

Lifting load charts for jib based on 11.5m

Full outrigger based on 8.3m, swing 360°, jib 11.55m and counterweight of 64t

Boom length	44.6+11.55			49.1+11.55			53.6+11.55			58.1+11.55			62.0+11.55		
	0°	15°	30°	0	15°	30°	0°	15°	30°	0°	15°	30°	0°	15°	30°
10	11														
12	10.5	8.6		10											
14	10.2	8	6.2	9.8	7.5		9.5			7.5					
16	9.8	7.3	6	9.5	7	6.1	9	6.9		7.3	6.8		6.8		
18	9.5	6.8	5.7	9.2	6.6	5.8	8.7	6.7	5.7	7	6.5	5.6	6.5	6.3	
20	9.1	6.3	5.5	8.8	6.2	5.6	8.3	6.3	5.5	6.8	6.1	5.5	6.3	6	5.1
22	8.7	5.9	5.2	8.5	5.8	5.3	8	6	5.3	6.5	5.7	5.3	6	5.7	5
24	7.8	5.6	5	8	5.6	5.1	7.7	5.7	5.2	6.1	5.3	5.1	5.7	5.3	4.8
26	7.2	5.3	4.7	7.5	5.4	4.9	7.3	5.3	5	5.8	5.1	5	5.4	5.1	4.6
28	6.9	5.1	4.5	7.2	5.2	4.7	6.9	5.1	4.7	5.5	4.8	4.7	5.2	4.7	4.3
30	6.6	4.9	4.4	6.8	5	4.5	6.2	4.8	4.4	5.3	4.6	4.5	5	4.5	4.2
32	6.4	4.7	4.3	6.4	4.8	4.3	5.7	4.3	4.2	5.1	4.3	4.4	4.6	4.3	4.1
34	6.2	4.5	4.2	5.8	4.6	4.2	5.1	4.1	4	4.7	4.1	4.2	4.1	4	4
36	6	4.3	4	5.2	4.5	4.1	4.6	3.9	3.9	4.2	3.8	4	3.7	3.7	3.8
38	5.8	4.1	3.9	4.7	4.3	4	4.1	3.8	3.8	3.8	3.6	3.9	3.3	3.4	3.4
40	5.2	3.9	3.8	4.3	4	3.9	3.7	3.6	3.8	3.5	3.5	3.6	3	3.1	3.1
42	4.8	3.8	3.7	3.9	3.7	3.8	3.4	3.4	3.5	3.1	3.2	3.2	2.7	2.8	2.8
44	4.4	3.6	3.6	3.5	3.3	3.6	3.1	3.1	3.2	2.9	2.9	2.9	2.3	2.5	2.5
46	4.1	3.5	2.8	3.2	3	3.4	2.7	2.9	2.9	2.6	2.6	2.7	2.1	2.2	2.2
48			2.3	2.9	2.7	3	2.5	2.6	2.6	2.3	2.4	2.4	1.9	2	2
50				2.5	2.2	2.6	2.2	2.3	2.3	2	2.1	2.2	1.7	1.7	1.8
52						2.4	2	2.1	2.1	1.9	1.9	2	1.4	1.5	1.6
54							1.8	1.8	1.9	1.7	1.7	1.7	1.3	1.3	1.4
56										1.5	1.5	1.5	1.1	1.2	1.2
58										1.3	1.4	1.4	0.9	1	1

XCMG QAY180

Lifting load charts for jib based on 20m

Full outrigger based on 8.3m, swing 360°, jib based on 20m and counterweight of 64t

Boom length	44.6+20			49.1+20			53.6+20			58.1+20			62.0+20		
	0°	15°	30°	0	15°	30°	0°	15°	30°	0°	15°	30°	0°	15°	30°
12	6.0			5.8											
14	5.9			5.6			5.4								
16	5.8	4.3		5.3			5.2			4.8			4.5		
18	5.5	4.3		5.0	3.9		4.9	3.7		4.8			4.5		
20	5.2	4.0	3.1	4.8	3.7	3.1	4.7	3.6		4.8	3.3		4.3	3.0	
22	5.0	3.8	3.0	4.5	3.5	2.9	4.5	3.4	2.8	4.6	3.0	2.9	4.0	2.8	
24	4.7	3.5	2.9	4.3	3.3	2.8	4.3	3.2	2.7	4.1	2.9	2.7	3.9	2.7	2.5
26	4.3	3.3	2.8	4.1	3.1	2.8	4.1	3.1	2.7	4.0	2.8	2.6	3.7	2.6	2.4
28	4.0	3.0	2.8	4.0	2.9	2.8	3.9	2.9	2.7	3.8	2.7	2.5	3.5	2.5	2.4
30	3.8	2.9	2.7	3.8	2.7	2.7	3.8	2.6	2.6	3.7	2.6	2.5	3.4	2.4	2.3
32	3.7	2.7	2.7	3.8	2.6	2.7	3.6	2.5	2.6	3.5	2.5	2.5	3.3	2.3	2.3
34	3.5	2.6	2.6	3.6	2.5	2.6	3.5	2.4	2.5	3.4	2.4	2.4	3.2	2.2	2.2
36	3.4	2.5	2.6	3.4	2.4	2.6	3.4	2.3	2.3	3.3	2.3	2.4	3.1	2.2	2.1
38	3.3	2.4	2.5	3.2	2.3	2.5	3.3	2.2	2.2	3.0	2.2	2.3	3.0	2.1	2.1
40	3.1	2.4	2.5	3.1	2.2	2.5	3.1	2.2	2.2	2.8	2.1	2.3	2.8	2.0	2.0
42	2.9	2.3	2.4	2.9	2.1	2.5	3.0	2.1	2.2	2.7	2.1	2.2	2.4	2.0	2.0
44	2.8	2.2	2.4	2.8	2.1	2.4	2.8	2.1	2.1	2.6	2.0	2.1	2.1	1.9	1.9
46	2.6	2.1	2.4	2.6	2.0	2.3	2.4	2.0	2.1	2.4	2.0	2.1	1.9	1.8	1.9
48	2.5	2.1	2.3	2.5	2.0	2.3	2.1	2.0	1.8	2.1	1.9	1.7	1.7	1.8	1.7
50	2.3	2.0	2.2	2.4	1.9	2.2	1.9	1.9	1.8	1.9	1.9	1.7	1.5	1.6	1.6
52	2.3	2.0	2.2	2.3	1.9	2.1	1.7	1.9	1.8	1.7	1.8	1.6	1.3	1.5	1.5
54	2.3	2.0	2.0	2.0	1.7	2.0	1.5	1.8	1.7	1.5	1.6	1.5	1.1	1.2	1.3
56		2.0	1.8	1.8	1.6	1.8	1.3	1.6	1.6	1.3	1.4	1.5	1.0	1.1	1.2
58					1.6	1.7	1.1	1.4	1.5	1.1	1.2	1.3	0.8	0.9	1.0
60								1.1	1.3	1.0	1.1	1.2			
62								1.0	1.1	0.9	1.0	1.0			

XCMG QAY180

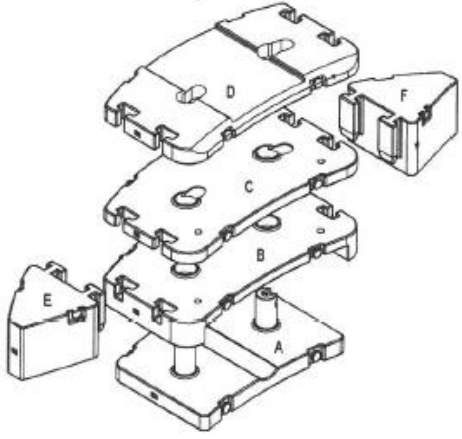
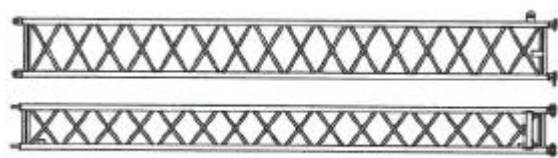
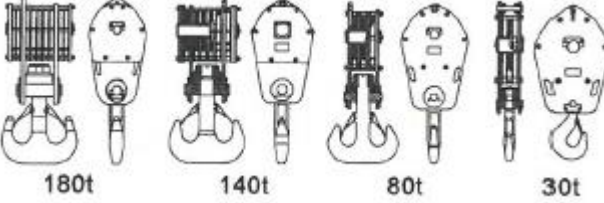
Lifting load charts for jib based on 28m

Full outrigger based on 8.3m, swing 360°, jib based on 20m and counterweight of 64t

Boom length	44.6+20			49.1+20			53.6+20			58.1+20			62.0+20		
	0°	15°	30°	0	15°	30°	0°	15°	30°	0°	15°	30°	0°	15°	30°
14	3.8			3.7											
16	3.6			3.5			3.5			3.3					
18	3.4			3.3			3.3			3.2			2.9		
20	3.2	2.5		3.2			3.2			3.1			2.9		
22	3.0	2.4		3.1	2.4		3.1	2.4		3.1			2.8		
24	2.8	2.3		2.9	2.3		2.8	2.3		2.8	2.3		2.7	2.3	
26	2.7	2.2	1.9	2.8	2.2		2.7	2.2		2.7	2.3		2.6	2.2	
28	2.6	2.1	1.8	2.7	2.2	1.8	2.6	2.1	1.8	2.6	2.2		2.5	2.2	
30	2.5	2.0	1.8	2.6	2.1	1.8	2.5	2.1	1.8	2.5	2.1	1.6	2.4	2.1	1.6
32	2.4	2.0	1.7	2.5	2.0	1.7	2.5	2.0	1.7	2.4	2.1	1.6	2.3	2.1	1.5
34	2.3	1.9	1.6	2.4	2.0	1.7	2.4	2.0	1.7	2.3	2.0	1.5	2.3	2.0	1.5
36	2.2	1.9	1.6	2.3	1.9	1.6	2.3	1.9	1.7	2.3	1.9	1.5	2.2	1.9	1.5
38	2.1	1.8	1.6	2.2	1.8	1.6	2.3	1.8	1.6	2.2	1.9	1.5	2.1	1.9	1.4
40	2.0	1.8	1.6	2.1	1.8	1.6	2.2	1.8	1.6	2.2	1.8	1.4	2.0	1.8	1.4
42	2.0	1.7	1.5	2.0	1.7	1.5	2.1	1.7	1.5	2.1	1.8	1.4	2.0	1.8	1.3
44	2.0	1.7	1.5	1.9	1.7	1.5	2.0	1.7	1.5	2.0	1.7	1.3	1.9	1.7	1.3
46	1.9	1.6	1.5	1.9	1.6	1.5	1.9	1.6	1.4	1.9	1.6	1.3	1.7	1.6	1.3
48	1.8	1.6	1.4	1.8	1.6	1.4	1.8	1.6	1.4	1.8	1.6	1.3	1.4	1.6	1.2
50	1.7	1.5	1.4	1.7	1.6	1.4	1.7	1.6	1.4	1.7	1.6	1.2	1.3	1.5	1.2
52	1.7	1.5	1.3	1.7	1.5	1.4	1.6	1.5	1.4	1.4	1.6	1.2	1.1	1.3	1.2
54	1.6	1.5	1.3	1.6	1.5	1.4	1.5	1.5	1.3	1.3	1.4	1.2	0.9	1.1	1.1
56	1.6	1.4	1.3	1.6	1.5	1.4	1.3	1.4	1.2	1.1	1.3	1.2	0.8	0.9	1.1
58	1.5	1.4	1.3	1.5	1.4	1.3	1.2	1.3	1.2	0.9	1.1	1.2			
60		1.4	1.2	1.3	1.4	1.3	1.0	1.1	1.2						
62				1.1	1.3	1.3		1.0	1.1						

XCMG QAY180

Additional technical information

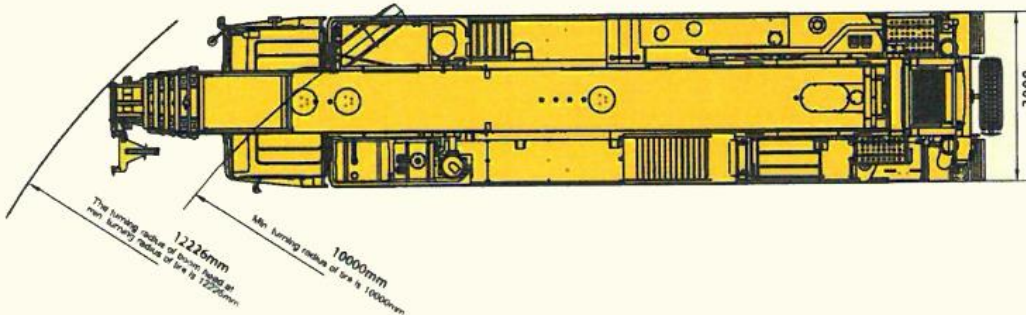
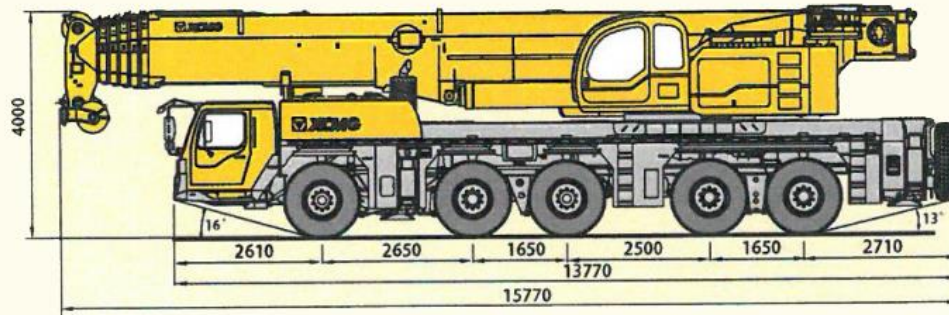
	<table border="1"> <thead> <tr> <th colspan="5">A,B,C,D</th> </tr> </thead> <tbody> <tr> <td colspan="4">Counterweight</td> <td>X1</td> </tr> <tr> <td>L</td> <td>3000mm</td> <td>3750mm</td> <td></td> <td></td> </tr> <tr> <td>W</td> <td>2378mm</td> <td>2448mm</td> <td></td> <td></td> </tr> <tr> <td>H</td> <td>259mm</td> <td>450mm</td> <td>225mm</td> <td>232mm</td> </tr> <tr> <td>Weight</td> <td>12000kg</td> <td>11000kg</td> <td>11000kg</td> <td>12000kg</td> </tr> </tbody> </table> <table border="1"> <thead> <tr> <th colspan="2">E,F</th> </tr> </thead> <tbody> <tr> <td colspan="2">Counterweight</td> </tr> <tr> <td>L</td> <td>1568mm</td> </tr> <tr> <td>W</td> <td>1375mm</td> </tr> <tr> <td>H</td> <td>905mm</td> </tr> <tr> <td>Weight</td> <td>9000kg</td> </tr> </tbody> </table>	A,B,C,D					Counterweight				X1	L	3000mm	3750mm			W	2378mm	2448mm			H	259mm	450mm	225mm	232mm	Weight	12000kg	11000kg	11000kg	12000kg	E,F		Counterweight		L	1568mm	W	1375mm	H	905mm	Weight	9000kg
A,B,C,D																																											
Counterweight				X1																																							
L	3000mm	3750mm																																									
W	2378mm	2448mm																																									
H	259mm	450mm	225mm	232mm																																							
Weight	12000kg	11000kg	11000kg	12000kg																																							
E,F																																											
Counterweight																																											
L	1568mm																																										
W	1375mm																																										
H	905mm																																										
Weight	9000kg																																										
	<table border="1"> <thead> <tr> <th colspan="2">Extension</th> </tr> </thead> <tbody> <tr> <td colspan="2">X2</td> </tr> <tr> <td>L</td> <td>8000mm</td> </tr> <tr> <td>W</td> <td>600mm</td> </tr> <tr> <td>H</td> <td>800mm</td> </tr> <tr> <td>Weight</td> <td>546kg</td> </tr> </tbody> </table>	Extension		X2		L	8000mm	W	600mm	H	800mm	Weight	546kg																														
Extension																																											
X2																																											
L	8000mm																																										
W	600mm																																										
H	800mm																																										
Weight	546kg																																										
	<table border="1"> <thead> <tr> <th colspan="5">180t, 140t, 80t, 30t</th> </tr> </thead> <tbody> <tr> <td colspan="4">Capacity Hook Block</td> <td>X1</td> </tr> <tr> <td>L</td> <td>1090mm</td> <td>773mm</td> <td>373mm</td> <td>235mm</td> </tr> <tr> <td>W</td> <td>817mm</td> <td>835mm</td> <td></td> <td></td> </tr> <tr> <td>H</td> <td>2194mm</td> <td>2177mm</td> <td>1949mm</td> <td>1669mm</td> </tr> <tr> <td>Weight</td> <td>2555kg</td> <td>2400mm</td> <td>1150kg</td> <td>600kg</td> </tr> </tbody> </table>	180t, 140t, 80t, 30t					Capacity Hook Block				X1	L	1090mm	773mm	373mm	235mm	W	817mm	835mm			H	2194mm	2177mm	1949mm	1669mm	Weight	2555kg	2400mm	1150kg	600kg												
180t, 140t, 80t, 30t																																											
Capacity Hook Block				X1																																							
L	1090mm	773mm	373mm	235mm																																							
W	817mm	835mm																																									
H	2194mm	2177mm	1949mm	1669mm																																							
Weight	2555kg	2400mm	1150kg	600kg																																							

XCMG QAY180

Additional technical information

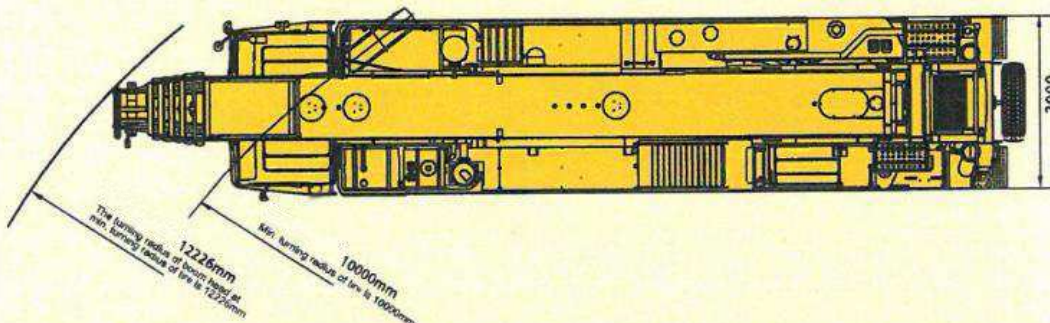
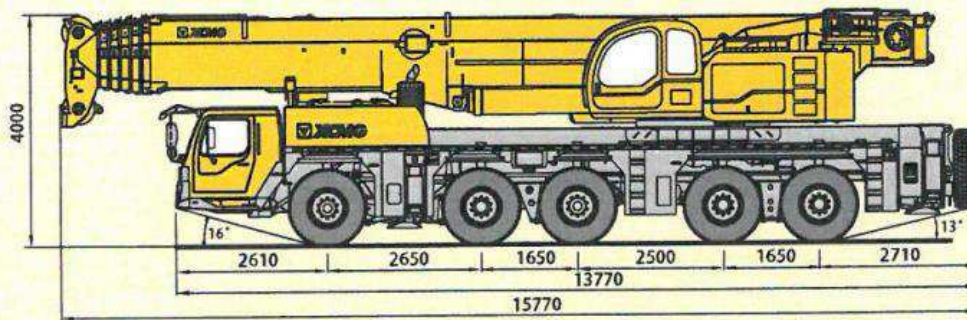
60t 10000mm 12226mm.

QAY180 All Terrain crane outline in travel configuration with 60t counterweight equipped. Min. turning radius of tire is 10000mm. The turning radius of boom head at min. turning radius of tire is 12226mm.



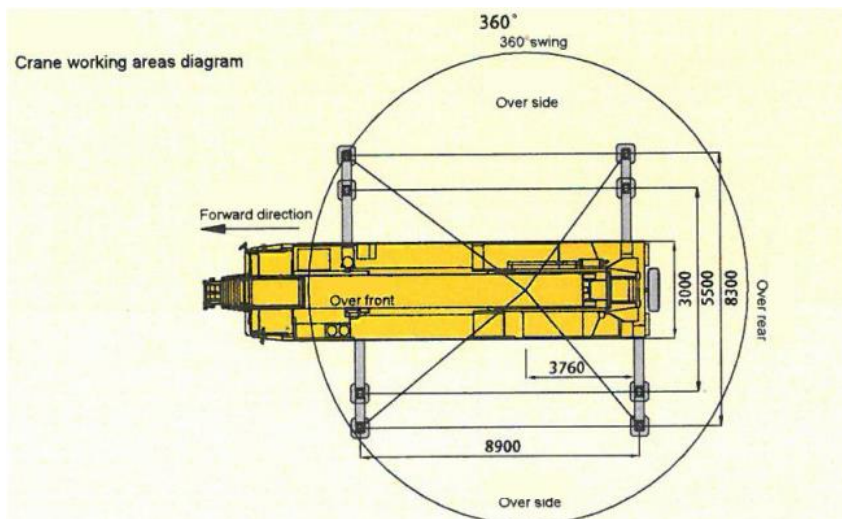
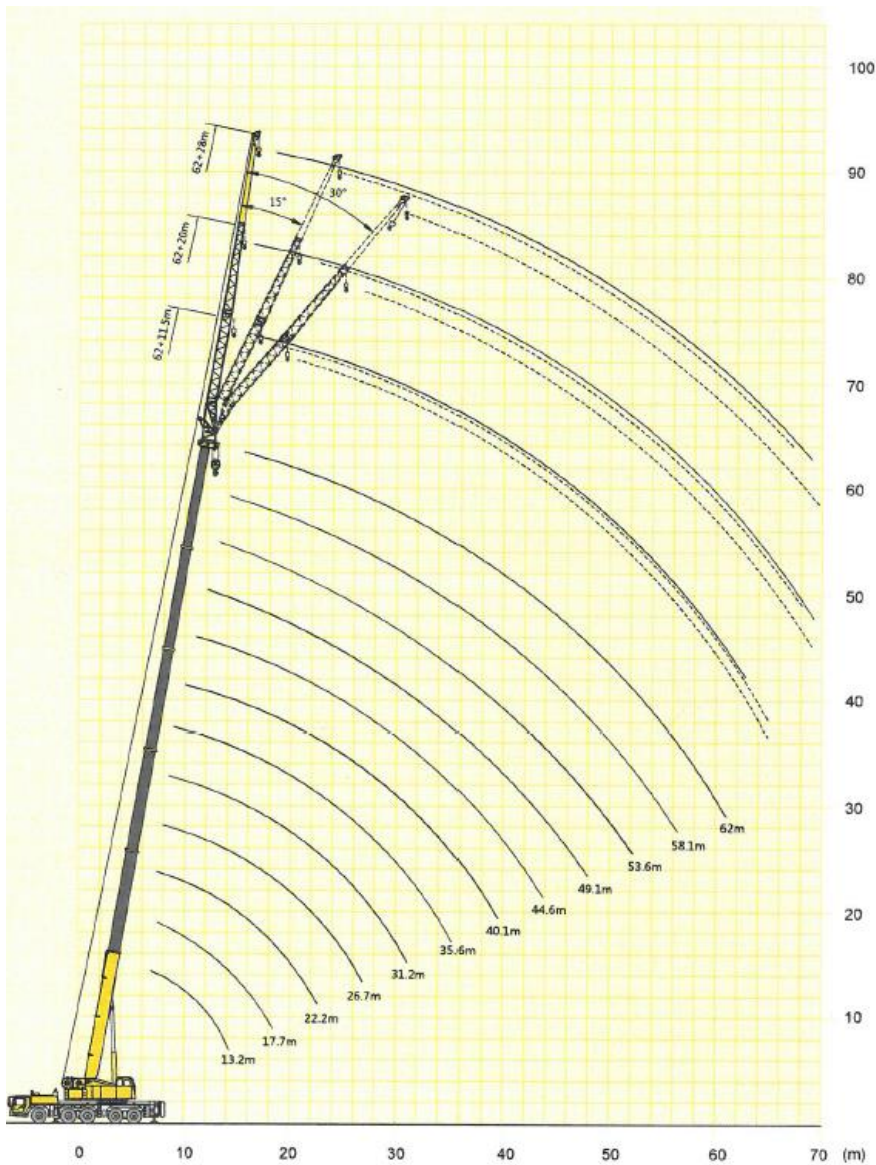
55t ,10000mm ,12226mm.

QAY180 All Terrain crane outline in travel configuration with 55t counterweight equipped. Min. turning radius of tire is 10000mm. The turning radius of boom head at min. turning radius of tire is 12226mm.



XCMG QAY180

Additional technical information



XCMG QAY180

Additional technical information

Truck Chassis

XCMG specially designed and manufactured chassis

Rexroth Hydraulics

Gearbox

12-gear automatic control transmission

Axle

The 2nd, 4th, and 5th axles are the drive axle.
The steering form is 10x10 full-axle steering





Next International Equipment

Next International Equipment
Room 2611-12, 26/F, C C Wu Building,
302-308 Hennessy Road, Wanchai,
Hong Kong