



**DEMAG AC100/4** | All Terrain Crane 120 t Lifting Capacity



**DEMAG AC100/4**  
ALL TERRAIN CRANE

**DEMAG AC100/4**  
**HIGHLIGHTS**

- Strongest 4-axle crane in all working configurations
- Only 4-axle crane with only 8.4 ft width on 16.00 R 25 tires
- 15,200 lb counterweight within 26,500 lb axle load, 47,000 lb within 35,300 lb axle load roadable
- High and economic road and crane performance due to powerful and modern drive train technology
- Most variable main boom extension system in its class
- 4 outrigger bases, outrigger pressure control and air-conditions serial



**CONTENTS**

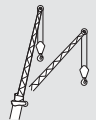
Page:

**Specifications** ..... 4

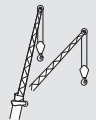
1


**HA** Main boom ..... 8

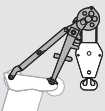
2


**HAV** Folding swing-away jib ..... 12

3


**HAV-VA** Variable extension with swing-away jib ..... 15

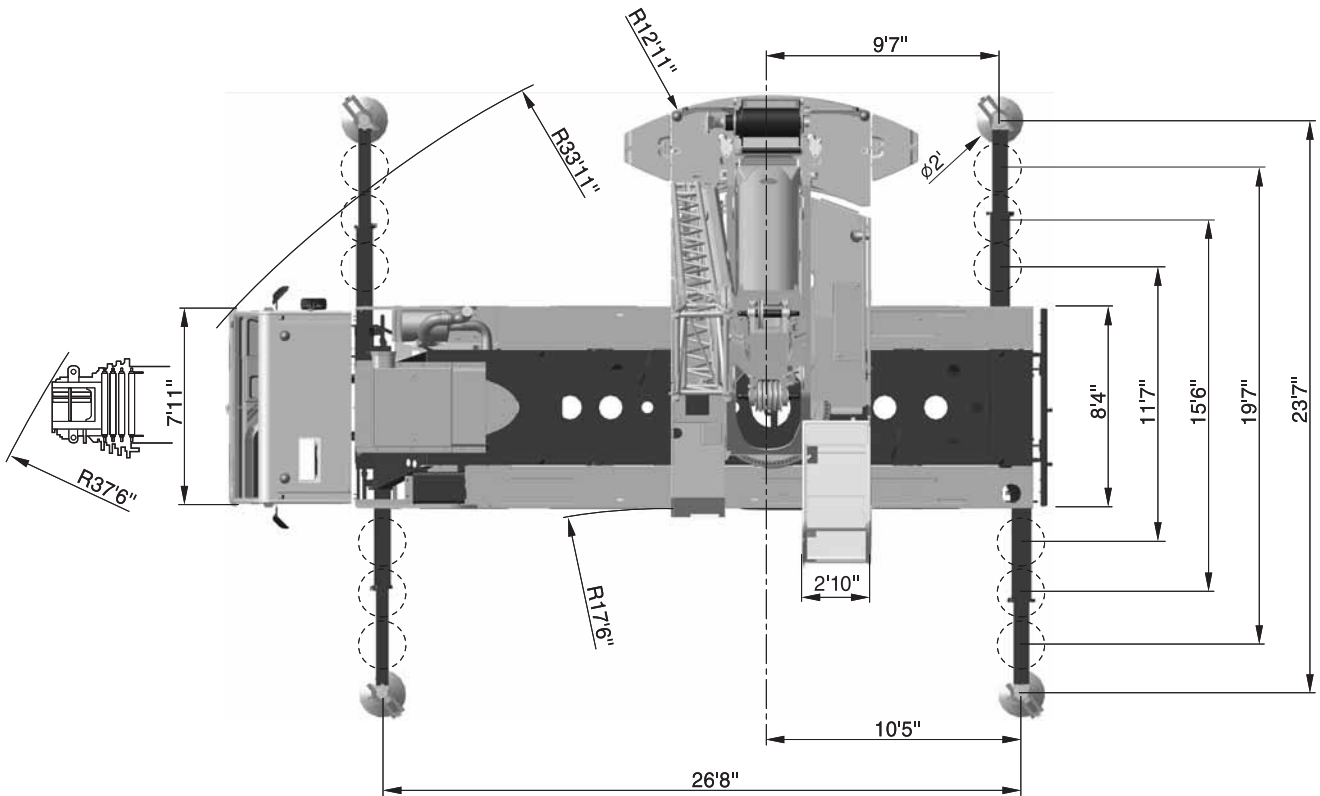
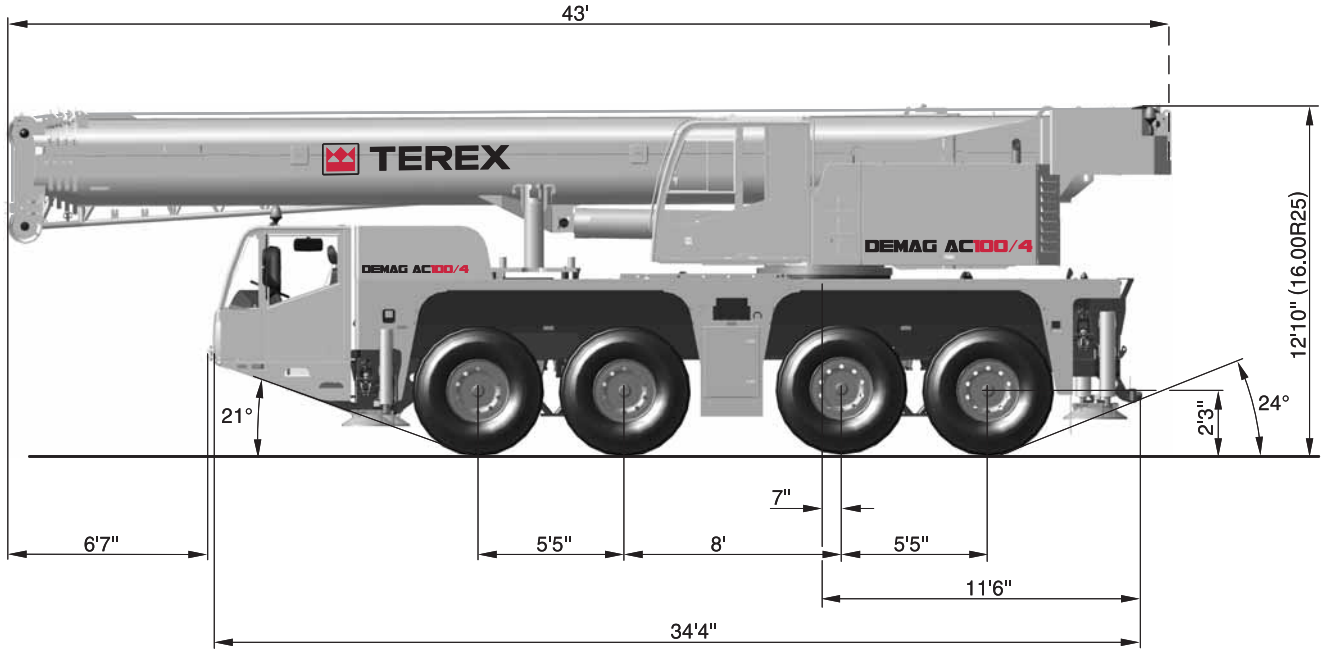
4


**MS** Runner ..... 17

5

**Equipment** ..... 20

6

**DIMENSIONS**


**SPECIFICATIONS**


	Total							
< 22,100 lb					On request!			X
< 26,500 lb	88,200 lb	8 x 6 x 8	14.00 R 25	8-0-18	-	-	-	-
< 26,500 lb	105,800 lb	8 x 8 x 8	16.00 R 25	20-1-18	11,900 lb	62.3 ft	-	-
< 26,500 lb	105,800 lb	8 x 8 x 8	16.00 R 25	20-1-18	15,200 lb	-	-	-
< 28,700 lb	110,300 lb	8 x 8 x 8	16.00 R 25	50-3-18	15,200 lb	62.3 ft	-	-
< 28,700 lb	114,700 lb	8 x 8 x 8	16.00 R 25	50-3-18	22,300 lb	62.3 ft	-	-
< 32,000 lb	125,700 lb	8 x 8 x 8	16.00 R 25	50-3-18	30,400 lb	62.3 ft	-	-
< 32,000 lb	127,900 lb	8 x 8 x 8	16.00 R 25	50-3-18	33,700 lb	62.3 ft	-	-
< 35,300 lb	114,100 lb	8 x 8 x 8	16.00 R 25	50-3-18	47,000 lb	62.3 ft	-	-



	14.00 R 25 395/95 R 25 X	16.00 R 25 445/95 R 25 X	17.50 R 25	20.50 R 25
	52.8 mph	52.8 mph	52.8 mph	52.8 mph
	45 %	45 %	40 %	40 %
	> 70 %	> 60 %	> 70 %	> 60 %

- 1 Highway > 28.0 mph  
Axles 3 + 4 rigid
- 2 City < 28.0 mph  
Axle 4 with speed dependent steering
- 3\* Minimum turning radius < 3.1 mph  
Axles 3 + 4 steered automatically
- 4\* Off-wall  
No tail swing
- 5\* Crab steer mode  
All axles in the same direction
- 6\* All wheel steering  
Axles 3 + 4 manually steerable

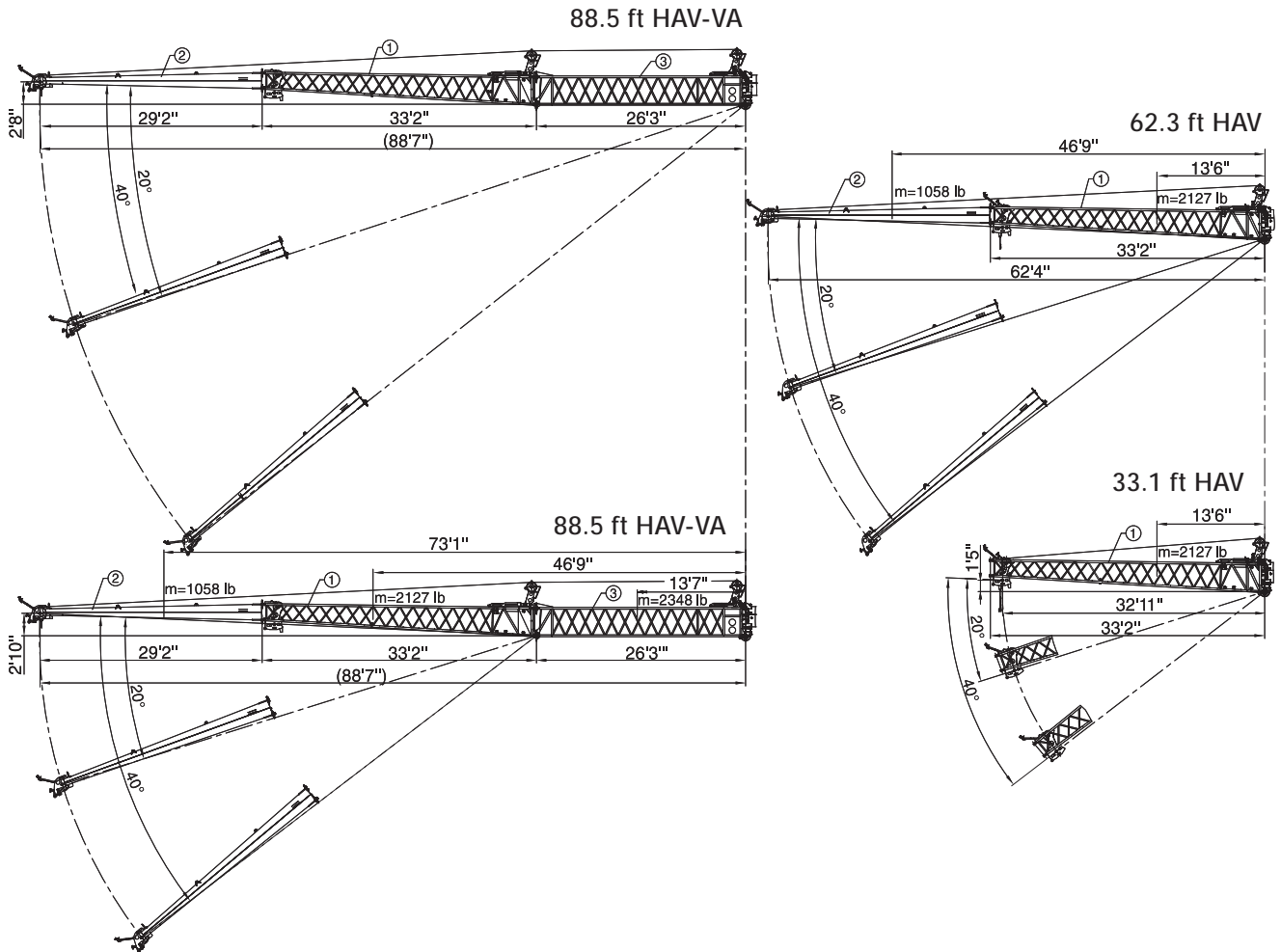
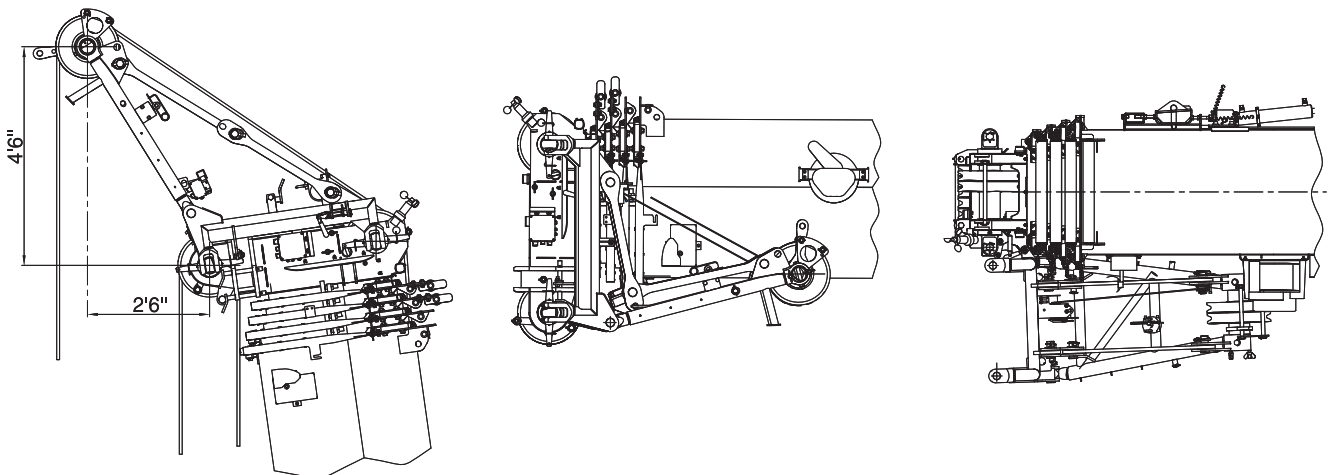
\* must be activated

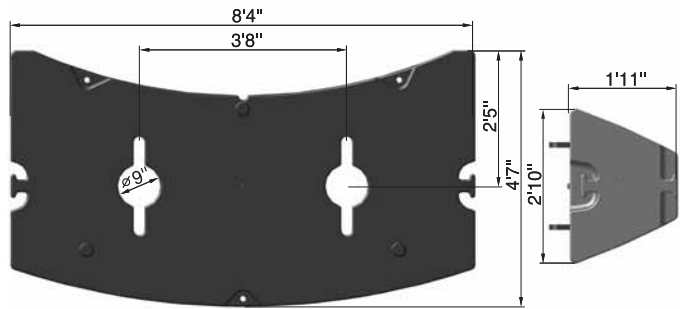
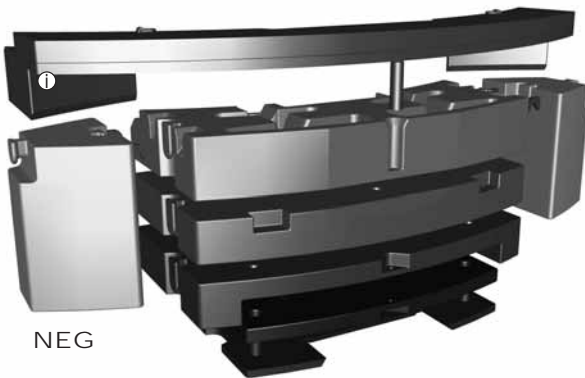
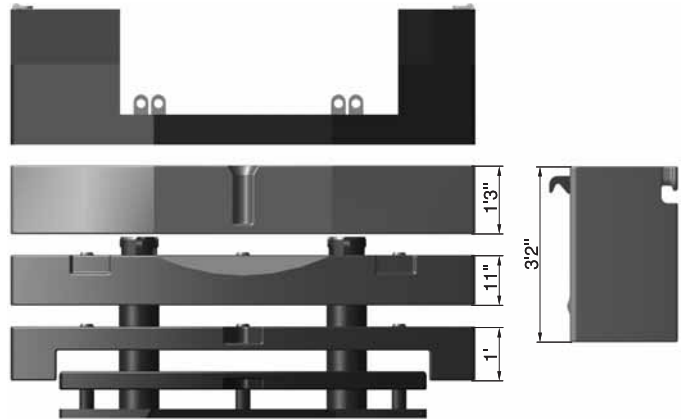
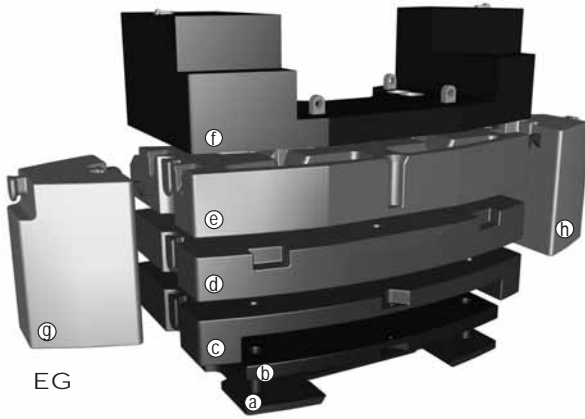


	1,4 min <sup>-1</sup>	315 s (39.3 - 164 ft)	60 s (0° - 82°)	377 ft/min	377 ft/min	
	14,500 lb	0,71"	870 ft			
	14,500 lb	0,71"	870 ft			
100-7-18	7	15	208,400 lb	1654 lb	6.6 ft	8
80-5-18	5	11	155,900 lb	1433 lb	6.6 ft	6
50-3-18	3	7	101,200 lb	1212 lb	5.9 ft	5
20-1-18	1	3	44,100 lb	772 lb	5.9 ft	5
8-0-18	-	1	15,000 lb	375 lb	3.3 ft	5

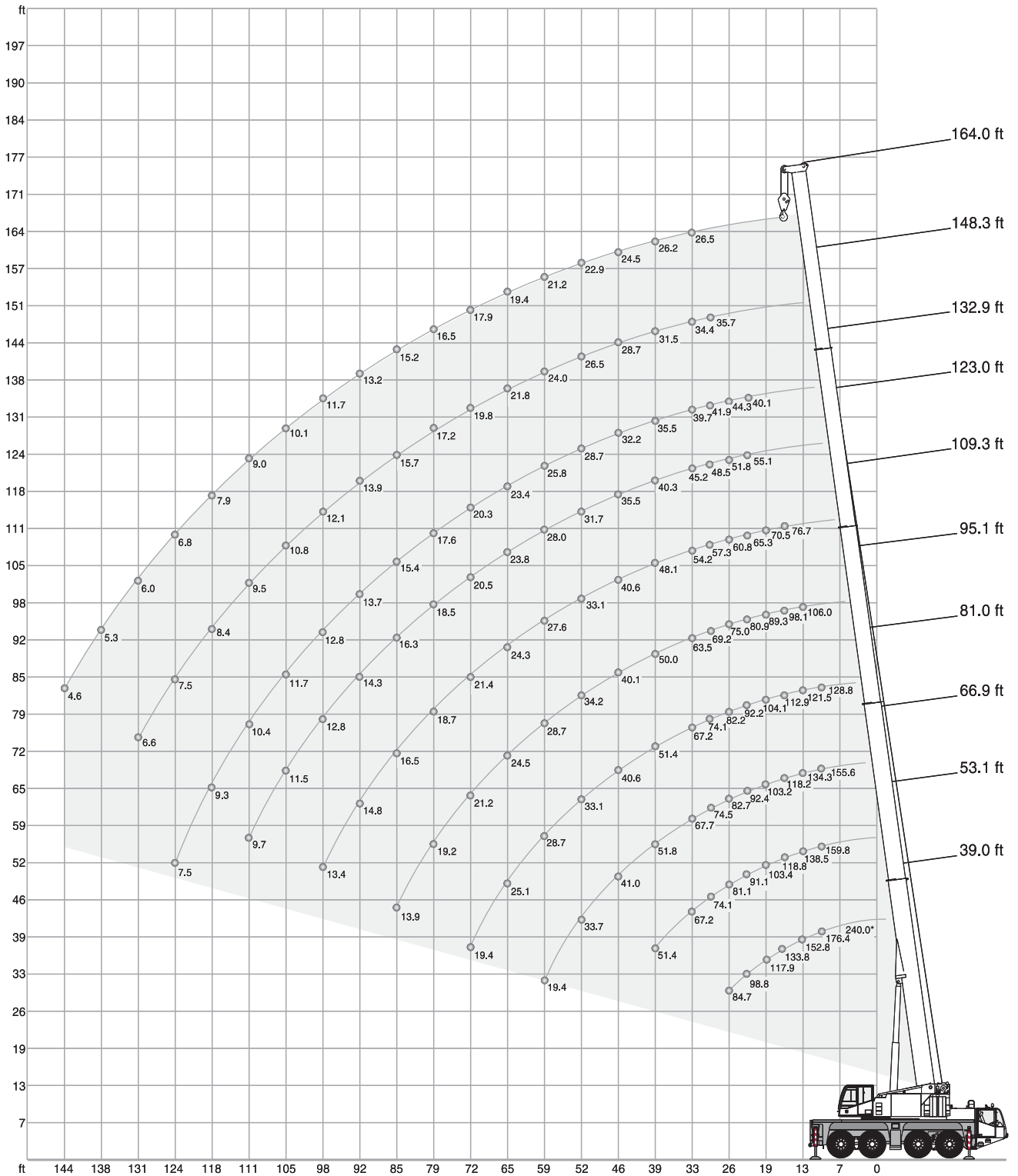
**EQUIPMENT**

HAV / HAV-VA


**MS**


**COUNTERWEIGHT**
**PARTS**

**CONFIGURATIONS**

	EG	NEG	Ⓐ 1,540 lb	Ⓑ 3,310 lb	Ⓒ 7,060 lb	Ⓓ 11,470 lb	Ⓔ 13,230 lb	Ⓕ 10,360 lb	Ⓖ 5,290 lb	Ⓗ 5,290 lb	Ⓘ 10,360 lb
1,540 lb	X	X	X								
4,850 lb	X	X	X	X							
8,600 lb	X	X	X		X						
10,360 lb	X							X			
11,900 lb	X		X					X			
11,900 lb	X	X	X	X	X						
15,200 lb	X		X	X				X			
19,000 lb	X		X		X			X			
20,000 lb	X	X	X		X	X					
22,300 lb	X		X	X	X			X			
23,400 lb	X	X	X	X	X	X					
30,400 lb	X		X		X	X		X			
33,300 lb	X	X	X		X	X	X				
33,700 lb	X		X	X	X	X		X			
36,400 lb	X	X	X	X	X	X	X				
43,700 lb	X		X		X	X	X	X			
43,900 lb	X	X	X		X	X	X		X	X	
47,000 lb	X		X	X	X	X	X	X			
47,200 lb	X	X	X	X	X	X	X		X	X	
54,200 lb	X		X		X	X	X	X	X	X	
54,200 lb		X	X		X	X	X		X	X	X
57,500 lb	X		X	X	X	X	X	X	X	X	
57,500 lb		X	X	X	X	X	X		X	X	X



# HA

57,500 lb 26.6 ft x 23.6 ft 360° 85 %

	(0°)	39.0 ft	39.0 ft	53.1 ft	66.9 ft	81.0 ft	95.1 ft	109.3 ft	123.0 ft	132.9 ft	148.3 ft	164.0 ft	
ft	240.0*	-	-	-	-	-	-	-	-	-	-	-	ft
		1,000 lb											
10	176.4	163.6	159.8	155.6	128.8	-	-	-	-	-	-	-	10
11	163.8	149.9	148.4	144.2	128.8	-	-	-	-	-	-	-	11
13	152.8	138.2	138.5	134.3	121.5	106.0	-	-	-	-	-	-	13
15	142.9	127.2	128.3	125.7	116.6	102.1	-	-	-	-	-	-	15
16	133.8	117.7	118.8	118.2	112.9	98.1	76.7	-	-	-	-	-	16
19	117.9	102.1	103.4	103.2	104.1	89.3	70.5	-	-	-	-	-	19
23	98.8	89.9	91.1	92.4	92.2	80.9	65.3	55.1	40.1	-	-	-	23
26	84.7	80.0	81.1	82.7	82.2	75.0	60.8	51.8	44.3	-	-	-	26
29	-	-	74.1	74.5	74.1	69.2	57.3	48.5	41.9	35.7	-	-	29
33	-	-	67.2	67.7	67.2	63.5	54.2	45.2	39.7	34.4	26.5	-	33
39	-	-	51.4	51.8	51.4	50.0	48.1	40.3	35.5	31.5	26.2	-	39
46	-	-	-	41.0	40.6	40.1	40.6	35.5	32.2	28.7	24.5	-	46
52	-	-	-	33.7	33.1	34.2	33.1	31.7	28.7	26.5	22.9	-	52
59	-	-	-	19.4	28.7	28.7	27.6	28.0	25.8	24.0	21.2	-	59
65	-	-	-	-	25.1	24.5	24.3	23.8	23.4	21.8	19.4	-	65
72	-	-	-	-	19.4	21.2	21.4	20.5	20.3	19.8	17.9	-	72
79	-	-	-	-	-	19.2	18.7	18.5	17.6	17.2	16.5	-	79
85	-	-	-	-	-	13.9	16.5	16.3	15.4	15.7	15.2	-	85
92	-	-	-	-	-	-	14.8	14.3	13.7	13.9	13.2	-	92
98	-	-	-	-	-	-	13.4	12.8	12.8	12.1	11.7	-	98
105	-	-	-	-	-	-	-	11.5	11.7	10.8	10.1	-	105
111	-	-	-	-	-	-	-	9.7	10.4	9.5	9.0	-	111
118	-	-	-	-	-	-	-	-	9.3	8.4	7.9	-	118
124	-	-	-	-	-	-	-	-	7.5	7.5	6.8	-	124
131	-	-	-	-	-	-	-	-	-	6.6	6.0	-	131
138	-	-	-	-	-	-	-	-	-	-	5.3	-	138
144	-	-	-	-	-	-	-	-	-	-	4.6	-	144
151	-	-	-	-	-	-	-	-	-	-	-	-	151

47,000 lb (47,200 lb) 26.6 ft x 23.6 ft 360° 85 %

		39.0 ft	53.1 ft	66.9 ft	81.0 ft	95.1 ft	109.3 ft	123.0 ft	132.9 ft	148.3 ft	164.0 ft		
ft		1,000 lb											ft
10	163.1	159.8	155.6	128.8	-	-	-	-	-	-	-	10	
11	149.5	148.4	144.2	128.8	-	-	-	-	-	-	-	11	
13	136.9	138.0	134.3	121.5	106.0	-	-	-	-	-	-	13	
15	125.9	127.0	125.7	116.6	102.1	-	-	-	-	-	-	15	
16	116.6	117.7	117.5	112.9	98.1	76.7	-	-	-	-	-	16	
19	101.2	102.3	102.1	103.2	89.3	70.5	-	-	-	-	-	19	
23	88.8	90.2	91.5	91.1	80.9	65.3	55.1	40.1	-	-	-	23	
26	79.1	80.7	81.8	81.4	75.0	60.8	51.8	44.3	-	-	-	26	
29	-	72.5	73.0	72.5	68.1	57.3	48.5	41.9	35.7	-	-	29	
33	-	60.8	61.5	61.1	59.7	54.2	45.2	39.7	34.4	26.5	-	33	
39	-	45.6	46.1	45.6	45.0	45.6	40.3	35.5	31.5	26.2	-	39	
46	-	-	36.4	36.2	37.0	35.7	34.8	32.2	28.7	24.5	-	46	
52	-	-	30.6	30.6	30.2	29.8	29.5	28.0	26.5	22.9	-	52	
59	-	-	19.4	25.8	25.4	25.6	24.5	24.5	23.8	21.2	-	59	
65	-	-	-	22.0	22.3	21.6	21.4	20.7	20.1	19.4	-	65	
72	-	-	-	19.2	19.2	18.7	18.3	17.6	17.9	17.2	-	72	
79	-	-	-	-	16.8	16.5	16.1	15.9	15.4	15.0	-	79	
85	-	-	-	-	13.9	14.6	14.1	14.1	13.4	12.8	-	85	
92	-	-	-	-	-	12.8	12.3	12.6	11.7	11.0	-	92	
98	-	-	-	-	-	-	11.5	10.8	11.0	10.1	9.7	-	98
105	-	-	-	-	-	-	-	9.7	9.7	8.8	8.4	-	105
111	-	-	-	-	-	-	-	7.9	8.6	7.7	7.3	-	111
118	-	-	-	-	-	-	-	-	7.7	6.8	6.2	-	118
124	-	-	-	-	-	-	-	-	6.0	6.0	5.3	-	124
131	-	-	-	-	-	-	-	-	-	5.3	4.6	-	131
138	-	-	-	-	-	-	-	-	-	-	4.0	-	138
144	-	-	-	-	-	-	-	-	-	-	3.3	-	144

\* with special attachment

# HA

33,700 lb (33,300 lb)      26.6 ft x 23.6 ft      360°      85 %

	39.0 ft	53.1 ft	66.9 ft	81.0 ft	95.1 ft	109.3 ft	123.0 ft	132.9 ft	148.3 ft	164.0 ft		
ft					1,000 lb							ft
10	162.5	159.8	155.6	128.8	-	-	-	-	-	-	10	
11	147.7	148.4	144.2	128.8	-	-	-	-	-	-	11	
13	135.1	136.2	134.3	121.5	106.0	-	-	-	-	-	13	
15	124.3	125.4	125.2	116.6	102.1	-	-	-	-	-	15	
16	115.1	116.2	116.0	112.9	98.1	76.7	-	-	-	-	16	
19	99.9	101.0	101.4	101.9	89.3	70.5	-	-	-	-	19	
23	87.7	88.8	90.4	86.9	79.6	65.3	55.1	40.1	-	-	23	
26	72.1	75.6	76.5	73.0	67.2	60.8	51.8	44.3	-	-	26	
29	-	61.7	62.4	61.7	57.8	56.7	48.5	41.9	35.7	-	29	
33	-	51.6	52.2	51.8	50.5	49.6	45.2	39.7	34.4	26.5	33	
39	-	38.4	39.5	40.1	39.7	38.4	38.6	35.3	31.5	26.2	39	
46	-	-	31.5	31.7	31.1	31.5	30.4	30.2	28.7	24.5	46	
52	-	-	25.6	25.8	26.0	25.6	25.1	24.5	24.0	22.9	52	
59	-	-	19.4	21.8	21.6	21.4	20.9	21.2	20.3	19.8	59	
65	-	-	-	18.5	18.3	18.1	17.6	17.9	17.0	16.5	65	
72	-	-	-	15.9	15.9	15.4	15.0	15.2	14.3	13.9	72	
79	-	-	-	-	13.9	13.4	13.0	13.0	12.3	11.7	79	
85	-	-	-	-	12.1	11.7	11.2	11.2	10.6	9.9	85	
92	-	-	-	-	-	10.1	9.7	9.7	9.0	8.4	92	
98	-	-	-	-	-	8.8	8.4	8.6	7.7	7.1	98	
105	-	-	-	-	-	-	7.3	7.5	6.6	6.0	105	
111	-	-	-	-	-	-	5.7	6.4	5.5	5.1	111	
118	-	-	-	-	-	-	-	5.5	4.6	4.2	118	
124	-	-	-	-	-	-	-	4.0	4.0	3.3	124	
131	-	-	-	-	-	-	-	-	3.3	2.6	131	
138	-	-	-	-	-	-	-	-	-	2.2	138	
144	-	-	-	-	-	-	-	-	-	1.5	144	

22,300 lb      26.6 ft x 23.6 ft      360°      85 %

	39.0 ft	53.1 ft	66.9 ft	81.0 ft	95.1 ft	109.3 ft	123.0 ft	132.9 ft	148.3 ft	164.0 ft		
ft					1,000 lb							ft
10	161.2	159.8	155.6	128.8	-	-	-	-	-	-	10	
11	146.2	147.3	144.2	128.8	-	-	-	-	-	-	11	
13	133.6	134.7	134.3	121.5	106.0	-	-	-	-	-	13	
15	123.0	124.1	123.9	116.6	102.1	-	-	-	-	-	15	
16	113.8	114.9	114.9	112.9	98.1	76.7	-	-	-	-	16	
19	98.8	99.9	100.5	92.4	83.8	70.5	-	-	-	-	19	
23	79.8	84.0	80.9	75.2	68.8	65.3	55.1	40.1	-	-	23	
26	61.7	65.5	66.1	63.1	59.3	56.2	51.6	44.3	-	-	26	
29	-	53.1	53.8	53.1	52.7	48.7	45.6	41.9	35.7	-	29	
33	-	44.3	45.0	46.5	45.9	43.0	41.2	37.7	34.4	26.5	33	
39	-	32.6	34.4	34.6	34.8	34.4	33.7	31.3	29.5	26.2	39	
46	-	-	26.9	27.3	27.3	26.7	26.5	26.0	25.1	23.4	46	
52	-	-	21.6	22.0	22.0	21.8	21.4	21.4	20.7	19.4	52	
59	-	-	18.3	18.3	18.5	18.1	17.4	17.6	16.8	16.1	59	
65	-	-	-	15.4	15.7	15.2	14.6	14.8	13.9	13.2	65	
72	-	-	-	13.2	13.2	12.8	12.3	12.6	11.7	11.0	72	
79	-	-	-	-	11.5	11.0	10.4	10.6	9.7	9.0	79	
85	-	-	-	-	9.9	9.3	8.8	9.0	8.2	7.5	85	
92	-	-	-	-	-	7.9	7.5	7.5	6.6	6.2	92	
98	-	-	-	-	-	6.8	6.2	6.4	5.5	4.9	98	
105	-	-	-	-	-	-	5.3	5.5	4.6	4.0	105	
111	-	-	-	-	-	-	3.7	4.6	3.7	3.1	111	
118	-	-	-	-	-	-	-	3.7	2.9	2.4	118	
124	-	-	-	-	-	-	-	2.2	2.2	1.8	124	
131	-	-	-	-	-	-	-	-	1.8	-	131	

# HA

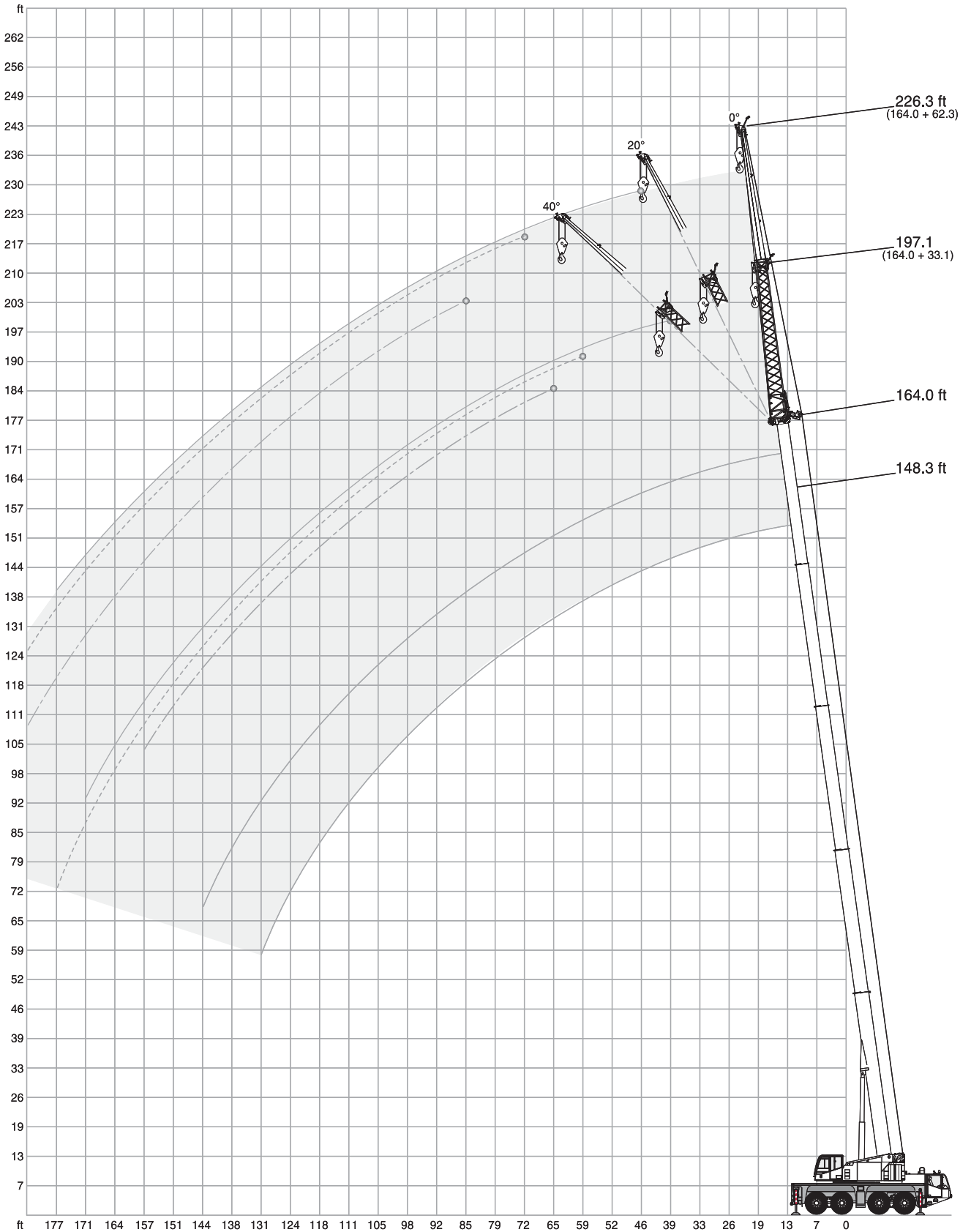
15,200 lb      26.6 ft x 23.6 ft      360°      85 %

	39.0 ft	53.1 ft	66.9 ft	81.0 ft	95.1 ft	109.3 ft	123.0 ft	132.9 ft	148.3 ft	164.0 ft	
ft					1,000 lb						ft
10	160.1	159.8	155.6	128.8	-	-	-	-	-	-	10
11	145.3	146.4	144.2	128.8	-	-	-	-	-	-	11
13	132.7	133.8	133.8	121.5	106.0	-	-	-	-	-	13
15	122.1	123.2	123.0	116.6	102.1	-	-	-	-	-	15
16	113.1	114.2	114.0	107.4	95.7	76.7	-	-	-	-	16
19	95.2	95.5	90.8	83.6	75.4	69.9	-	-	-	-	19
23	71.2	75.4	73.2	67.9	63.5	59.7	54.2	40.1	-	-	23
26	54.9	58.6	59.3	56.7	55.1	50.5	48.3	44.3	-	-	26
29	-	47.4	48.3	49.6	47.4	45.2	42.1	39.0	35.7	-	29
33	-	39.5	41.2	41.7	41.0	39.9	37.9	35.1	32.8	26.5	33
39	-	28.9	30.6	31.1	31.1	30.4	29.8	29.1	26.9	25.1	39
46	-	-	24.0	24.3	24.5	24.0	23.4	23.6	21.8	20.3	46
52	-	-	19.4	19.6	19.6	19.2	18.7	19.0	17.9	16.3	52
59	-	-	15.9	16.1	16.3	15.7	15.2	15.4	14.6	13.2	59
65	-	-	-	13.4	13.4	13.0	12.6	12.8	11.9	10.6	65
72	-	-	-	11.2	11.2	10.8	10.4	10.6	9.5	8.6	72
79	-	-	-	-	9.5	9.0	8.4	8.6	7.7	7.1	79
85	-	-	-	-	8.2	7.5	7.1	7.3	6.4	5.7	85
92	-	-	-	-	-	6.4	5.7	6.0	5.1	4.4	92
98	-	-	-	-	-	5.3	4.9	4.9	4.0	3.5	98
105	-	-	-	-	-	-	4.0	4.0	3.1	2.6	105
111	-	-	-	-	-	-	2.4	3.3	2.4	1.8	111
118	-	-	-	-	-	-	-	2.6	1.8	-	118

11,900 lb      26.6 ft x 23.6 ft      360°      85 %

	39.0 ft	53.1 ft	66.9 ft	81.0 ft	95.1 ft	109.3 ft	123.0 ft	132.9 ft	148.3 ft	164.0 ft	
ft					1,000 lb						ft
10	159.4	159.8	155.6	128.8	-	-	-	-	-	-	10
11	144.8	145.9	144.2	128.8	-	-	-	-	-	-	11
13	132.3	133.4	133.4	121.5	106.0	-	-	-	-	-	13
15	121.7	123.0	122.8	116.6	102.1	-	-	-	-	-	15
16	112.7	113.8	110.9	102.1	90.8	76.7	-	-	-	-	16
19	93.0	92.8	86.4	79.4	71.4	68.3	-	-	-	-	19
23	67.2	71.4	69.4	64.4	61.9	56.4	52.2	40.1	-	-	23
26	51.8	55.3	56.2	54.9	52.2	48.3	45.9	41.7	-	-	26
29	-	44.8	46.7	47.2	45.0	43.2	40.8	37.7	35.3	-	29
33	-	37.3	39.0	39.5	39.7	37.7	35.7	32.8	32.2	26.5	33
39	-	27.1	28.9	29.3	29.3	29.1	28.0	27.6	25.4	23.4	39
46	-	-	22.7	22.9	22.9	22.5	22.0	22.0	20.1	18.5	46
52	-	-	18.1	18.3	18.5	18.1	17.4	17.6	16.3	15.0	52
59	-	-	14.8	15.0	15.0	14.6	14.1	14.3	13.2	11.9	59
65	-	-	-	12.3	12.6	11.9	11.5	11.7	10.6	9.5	65
72	-	-	-	10.4	10.4	9.9	9.3	9.5	8.6	7.5	72
79	-	-	-	-	8.8	8.2	7.5	7.7	6.8	6.0	79
85	-	-	-	-	7.3	6.8	6.2	6.4	5.5	4.9	85
92	-	-	-	-	-	5.7	5.1	5.3	4.4	3.7	92
98	-	-	-	-	-	4.6	4.2	4.2	3.3	2.9	98
105	-	-	-	-	-	-	3.3	3.3	2.4	2.0	105
111	-	-	-	-	-	-	2.0	2.6	1.8	-	111
118	-	-	-	-	-	-	-	2.0	-	-	118

**HAV**



# HAV

57,500 lb      26.6 ft x 23.6 ft      360°      85 %

**148.3 ft**

ft	33.1 ft			62.3 ft		
	0°	20°	40°	0°	20°	40°
	1,000 lb					
39	19.0	-	-	10.1	-	-
46	18.7	-	-	10.1	-	-
52	18.5	18.1	-	10.1	-	-
59	18.1	17.4	15.9	10.1	-	-
65	17.0	16.5	15.7	9.9	9.3	-
72	15.9	15.7	15.4	9.7	9.0	-
79	14.8	14.8	14.8	9.5	8.8	7.7
85	13.7	13.9	13.9	9.3	8.6	7.5
92	12.8	12.8	13.0	9.0	8.4	7.5
98	11.2	12.1	12.1	8.8	8.2	7.3
105	9.9	10.6	11.2	8.6	8.2	7.3
111	9.3	9.3	9.7	8.2	7.9	7.1
118	8.2	8.6	8.8	7.9	7.7	7.1
124	7.1	7.7	7.9	7.1	7.3	6.8
131	6.2	6.6	6.8	6.6	7.1	6.8
138	5.5	6.0	6.0	5.7	6.2	6.6
144	4.9	5.1	5.3	5.1	5.7	6.0
151	4.2	4.4	-	4.4	5.1	5.5
157	3.5	3.7	-	3.7	4.4	4.9
164	3.1	3.3	-	3.3	3.7	4.2
170	-	-	-	2.9	3.3	3.5
177	-	-	-	2.4	2.9	-
184	-	-	-	2.0	2.4	-
190	-	-	-	1.5	1.8	-
197	-	-	-	-	-	-

**164.0 ft**

ft	33.1 ft			62.3 ft		
	0°	20°	40°	0°	20°	40°
	1,000 lb					
39	14.8	-	-	-	-	-
46	14.8	-	-	8.2	-	-
52	14.8	-	-	8.2	-	-
59	14.8	14.8	-	8.2	-	-
65	14.8	14.1	13.0	8.2	-	-
72	13.9	13.4	12.6	8.2	8.2	-
79	13.0	12.8	11.9	8.2	8.2	-
85	12.3	12.1	11.5	8.2	7.9	7.3
92	11.5	11.5	11.0	8.2	7.9	7.1
98	10.8	10.8	10.6	8.2	7.7	7.1
105	9.7	10.4	10.1	7.9	7.5	6.8
111	8.4	9.3	9.7	7.7	7.1	6.6
118	7.3	7.9	8.4	7.3	6.8	6.4
124	6.4	7.1	7.3	6.6	6.6	6.2
131	5.5	6.0	6.4	5.7	6.2	6.0
138	4.6	5.3	5.5	5.1	6.0	6.0
144	4.0	4.4	4.6	4.4	5.3	5.7
151	3.5	3.7	4.0	3.7	4.4	5.1
157	2.9	3.1	3.3	3.1	3.7	4.4
164	2.4	2.6	-	2.6	3.3	3.7
170	2.0	2.2	-	2.2	2.6	3.1
177	-	1.5	-	1.5	2.2	2.4
184	-	-	-	-	1.8	2.0
190	-	-	-	-	-	-
197	-	-	-	-	-	-

47,000 lb (47,200 lb)      26.6 ft x 23.6 ft      360°      85 %

**148.3 ft**

ft	33.1 ft			62.3 ft		
	0°	20°	40°	0°	20°	40°
	1,000 lb					
39	19.0	-	-	10.1	-	-
46	18.7	-	-	10.1	-	-
52	18.5	18.1	-	10.1	-	-
59	18.1	17.4	15.9	10.1	-	-
65	17.0	16.5	15.7	9.9	9.3	-
72	15.9	15.7	15.4	9.7	9.0	-
79	14.6	14.8	14.8	9.5	8.8	7.7
85	12.6	13.4	13.9	9.3	8.6	7.5
92	11.5	11.7	12.3	9.0	8.4	7.5
98	9.9	10.6	10.8	8.8	8.2	7.3
105	8.6	9.3	9.7	8.4	8.2	7.3
111	7.5	8.2	8.6	7.7	7.9	7.1
118	6.4	7.1	7.3	6.8	7.5	7.1
124	5.5	6.0	6.4	6.0	6.6	6.8
131	4.9	5.3	5.5	5.1	6.0	6.4
138	4.0	4.4	4.6	4.4	5.3	5.7
144	3.5	3.7	4.0	3.7	4.4	5.1
151	2.9	3.1	-	3.1	3.7	4.2
157	2.4	2.6	-	2.6	3.3	3.5
164	2.0	2.0	-	2.2	2.6	3.1
170	-	-	-	1.8	2.2	2.4
177	-	-	-	-	1.8	-
184	-	-	-	-	-	-


**164.0 ft**

ft	33.1 ft			62.3 ft		
	0°	20°	40°	0°	20°	40°
	1,000 lb					
39	14.8	-	-	-	-	-
46	14.8	-	-	8.2	-	-
52	14.8	-	-	8.2	-	-
59	14.8	14.8	-	8.2	-	-
65	14.8	14.1	13.0	8.2	-	-
72	13.9	13.4	12.6	8.2	8.2	-
79	13.0	12.8	11.9	8.2	8.2	-
85	12.3	12.1	11.5	8.2	7.9	7.3
92	10.6	11.5	11.0	8.2	7.9	7.1
98	9.0	9.9	10.6	8.2	7.7	7.1
105	7.7	8.6	9.3	7.9	7.5	6.8
111	6.6	7.5	7.9	6.8	7.1	6.6
118	5.7	6.4	6.8	6.0	6.8	6.4
124	4.9	5.5	5.7	5.1	6.2	6.2
131	4.0	4.6	4.9	4.4	5.3	6.0
138	3.3	3.7	4.2	3.5	4.6	5.3
144	2.6	3.1	3.3	3.1	4.0	4.6
151	2.2	2.4	2.6	2.4	3.3	3.7
157	1.5	2.0	2.0	2.0	2.6	3.1
164	-	-	-	-	2.0	2.4
170	-	-	-	-	1.5	2.0
177	-	-	-	-	-	-
184	-	-	-	-	-	-




# HAV

22,300 lb      26.6 ft x 23.6 ft      360°      85 %


 **148.3 ft**

ft	33.1 ft			62.3 ft		
	0°	20°	40°	0°	20°	40°
	1,000 lb					
39	19.0	-	-	10.1	-	-
46	18.7	-	-	10.1	-	-
52	18.3	18.1	-	10.1	-	-
59	16.1	16.8	15.9	10.1	-	-
65	13.4	14.1	15.4	9.9	9.3	-
72	11.2	12.3	13.0	9.7	9.0	-
79	9.3	10.4	11.5	9.0	8.8	7.7
85	7.7	8.8	9.7	7.5	8.6	7.5
92	6.4	7.3	8.2	6.4	7.9	7.5
98	5.3	6.2	6.6	5.3	6.8	7.3
105	4.2	5.1	5.5	4.4	5.7	6.8
111	3.3	4.0	4.4	3.5	4.9	6.0
118	2.6	3.1	3.5	2.9	4.0	5.1
124	2.0	2.4	2.9	2.2	3.3	4.2
131	-	1.8	2.0	1.8	2.6	3.3
138	-	-	-	-	2.0	2.6
144	-	-	-	-	-	2.0


 **164.0 ft**

ft	33.1 ft			62.3 ft		
	0°	20°	40°	0°	20°	40°
	1,000 lb					
39	14.8	-	-	-	-	-
46	14.8	-	-	8.2	-	-
52	14.8	-	-	8.2	-	-
59	14.6	14.8	-	8.2	-	-
65	11.9	13.4	13.0	8.2	-	-
72	9.7	11.2	12.3	8.2	8.2	-
79	7.9	9.3	10.4	7.7	8.2	-
85	6.4	7.7	8.6	6.2	7.9	7.3
92	5.3	6.2	7.1	5.1	6.8	7.1
98	4.2	5.1	6.0	4.0	5.7	7.1
105	3.3	4.2	4.9	3.1	4.6	6.2
111	2.4	3.3	3.7	2.4	3.7	5.1
118	1.8	2.4	3.1	1.8	3.1	4.2
124	-	1.8	2.2	-	2.2	3.3
131	-	-	-	-	1.8	2.6
138	-	-	-	-	-	2.0
144	-	-	-	-	-	-

11,900 lb      26.6 ft x 23.6 ft      360°      85 %

 **148.3 ft**

ft	33.1 ft			62.3 ft		
	0°	20°	40°	0°	20°	40°
	1,000 lb					
39	19.0	-	-	10.1	-	-
46	17.6	-	-	10.1	-	-
52	15.0	16.1	-	10.1	-	-
59	12.1	13.9	14.6	10.1	-	-
65	9.7	11.2	12.6	9.5	9.3	-
72	7.7	9.0	10.1	7.5	9.0	-
79	6.2	7.3	8.4	6.0	8.2	7.7
85	4.9	6.0	6.8	4.9	6.6	7.5
92	4.0	4.9	5.5	3.7	5.5	7.1
98	3.1	3.7	4.4	2.9	4.4	5.7
105	2.2	2.9	3.5	2.0	3.5	4.6
111	-	2.2	2.6	-	2.6	3.7
118	-	-	1.8	-	2.0	3.1
124	-	-	-	-	-	2.2
131	-	-	-	-	-	1.8

 **164.0 ft**

ft	33.1 ft			62.3 ft		
	0°	20°	40°	0°	20°	40°
	1,000 lb					
39	14.8	-	-	-	-	-
46	14.8	-	-	8.2	-	-
52	13.4	-	-	8.2	-	-
59	10.6	12.3	-	8.2	-	-
65	8.2	9.9	11.2	7.9	-	-
72	6.4	7.7	9.0	6.2	8.2	-
79	4.9	6.2	7.3	4.6	7.1	-
85	3.7	4.9	5.7	3.5	5.5	7.3
92	2.6	3.7	4.6	2.4	4.4	6.2
98	1.8	2.6	3.5	1.5	3.3	4.9
105	-	2.0	2.6	-	2.4	4.0
111	-	-	1.8	-	1.8	2.9
118	-	-	-	-	-	2.2
124	-	-	-	-	-	-
131	-	-	-	-	-	-

# HAV-VA

57,500 lb      26.6 ft x 23.6 ft      360°      85 %

148.3 ft

ft	26.2 ft				
	0°	0°	0°	20°	40°
	62.3 ft				
	0°	20°	40°	0°	0°
	1,000 lb				
46	6.6	-	-	-	-
52	6.6	-	-	-	-
59	6.6	-	-	-	-
65	6.6	-	-	-	-
72	6.6	6.4	-	-	-
79	6.6	6.2	-	-	-
85	6.4	6.2	-	5.5	-
92	6.2	6.0	5.5	5.3	-
98	6.0	5.7	5.5	5.1	-
105	5.7	5.5	5.3	4.9	4.2
111	5.7	5.3	5.1	4.9	4.0
118	5.5	5.1	5.1	4.6	4.0
124	5.3	4.9	4.9	4.4	4.0
131	5.1	4.9	4.6	4.4	3.7
138	4.9	4.6	4.6	4.2	3.7
144	4.0	4.4	4.4	4.2	3.7
151	3.7	4.2	4.4	4.0	3.5
157	3.3	3.5	4.2	4.0	3.5
164	2.6	3.3	3.5	3.3	3.5
170	2.0	2.9	3.1	2.9	3.3
177	1.5	2.2	2.6	2.4	2.9
184	-	1.8	2.0	2.0	2.4
190	-	-	-	-	1.8

164.0 ft

ft	26.2 ft				
	0°	0°	0°	20°	40°
	62.3 ft				
	0°	20°	40°	0°	0°
	1,000 lb				
46	-	-	-	-	-
52	4.9	-	-	-	-
59	4.9	-	-	-	-
65	4.9	-	-	-	-
72	4.9	-	-	-	-
79	4.9	4.6	-	-	-
85	4.9	4.6	-	-	-
92	4.9	4.6	-	4.6	-
98	4.9	4.6	4.9	4.6	-
105	4.9	4.6	4.9	4.6	-
111	4.9	4.6	4.6	4.4	4.0*
118	4.9	4.4	4.6	4.4	3.7*
124	4.9	4.4	4.4	4.2	3.7*
131	4.6	4.2	4.2	4.0	3.7*
138	4.2	4.0	4.0	3.7	3.5*
144	3.7	4.0	4.0	3.7	3.3*
151	3.1	3.7	3.7	3.5	3.3*
157	2.4	3.3	3.5	3.3	3.1*
164	1.8	2.6	3.3	3.1	3.1*
170	-	2.2	2.6	2.4	3.1*
177	-	-	2.0	1.8	2.6*
184	-	-	-	-	2.0*
190	-	-	-	-	-

47,000 lb (47,200 lb)      26.6 ft x 23.6 ft      360°      85 %

148.3 ft

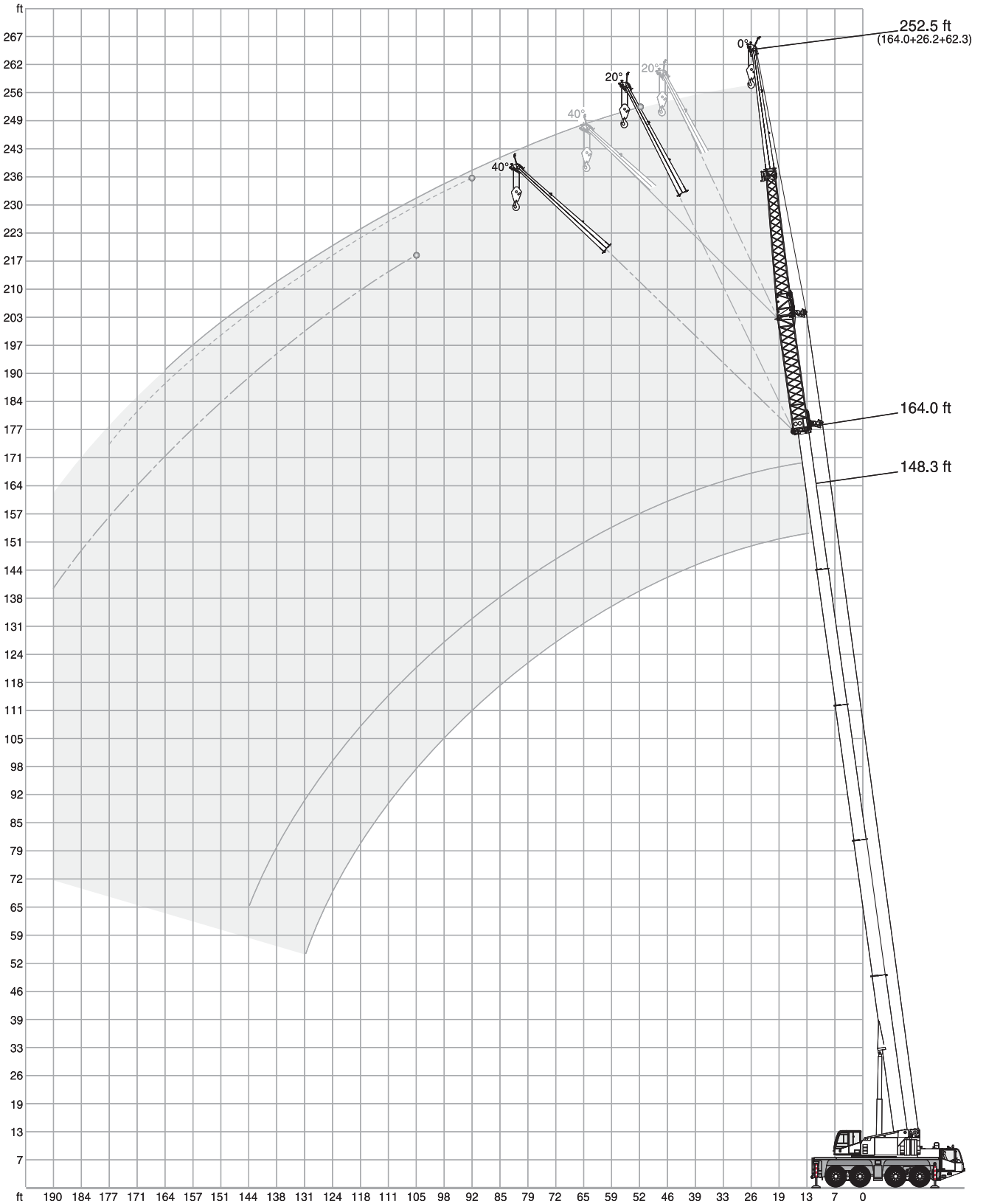
ft	26.2 ft				
	0°	0°	0°	20°	40°
	62.3 ft				
	0°	20°	40°	0°	0°
	1,000 lb				
46	6.6	-	-	-	-
52	6.6	-	-	-	-
59	6.6	-	-	-	-
65	6.6	-	-	-	-
72	6.6	6.4	-	-	-
79	6.6	6.2	-	-	-
85	6.4	6.2	-	5.5	-
92	6.2	6.0	5.5	5.3	-
98	6.0	5.7	5.5	5.1	-
105	5.7	5.5	5.5	4.9	4.2
111	5.7	5.3	5.1	4.9	4.0
118	5.5	5.1	5.1	4.6	4.0
124	4.9	4.9	4.9	4.4	4.0
131	4.6	4.9	4.6	4.4	3.7
138	3.7	4.4	4.6	4.2	3.7
144	3.1	4.0	4.4	4.0	3.7
151	2.4	3.3	3.7	3.5	3.5
157	2.0	2.6	3.3	3.1	3.5
164	-	2.2	2.6	2.4	3.1
170	-	1.5	2.0	1.8	2.6
177	-	-	-	-	2.0

164.0 ft

ft	26.2 ft				
	0°	0°	0°	20°	40°
	62.3 ft				
	0°	20°	40°	0°	0°
	1,000 lb				
46	-	-	-	-	-
52	4.9	-	-	-	-
59	4.9	-	-	-	-
65	4.9	-	-	-	-
72	4.9	-	-	-	-
79	4.9	4.6	-	-	-
85	4.9	4.6	-	-	-
92	4.9	4.6	-	4.6	-
98	4.9	4.6	4.9	4.6	-
105	4.9	4.6	4.9	4.6	-
111	4.9	4.6	4.6	4.4	4.0*
118	4.9	4.4	4.6	4.4	3.7*
124	4.2	4.4	4.4	4.2	3.7*
131	3.3	4.2	4.2	4.0	3.7*
138	2.6	4.0	4.0	3.7	3.5*
144	2.0	3.1	4.0	3.5	3.3*
151	-	2.4	3.5	2.9	3.3*
157	-	2.0	2.9	2.2	3.1*
164	-	-	2.2	1.8	2.9*
170	-	-	-	-	2.2*
177	-	-	-	-	-

\* 160.8 ft

**HAV-VA**






# MS


**57,500 lb**

**26.6 ft x 23.6 ft**




**360°**

**85 %**

												
	39.0 ft	53.1 ft	66.9 ft	81.0 ft	95.1 ft	109.3 ft	123.0 ft	132.9 ft	148.3 ft	164.0 ft		
ft	1,000 lb											ft
10	58.0	58.0	58.0	-	-	-	-	-	-	-	-	10
11	58.0	58.0	58.0	58.0	-	-	-	-	-	-	-	11
13	58.0	58.0	58.0	58.0	-	-	-	-	-	-	-	13
15	58.0	58.0	58.0	58.0	-	-	-	-	-	-	-	15
16	58.0	58.0	58.0	58.0	58.0	-	-	-	-	-	-	16
19	58.0	58.0	58.0	58.0	58.0	58.0	-	-	-	-	-	19
23	58.0	58.0	58.0	58.0	58.0	58.0	-	-	-	-	-	23
26	58.0	58.0	58.0	58.0	58.0	55.3	48.1	35.1	-	-	-	26
29	58.0	58.0	58.0	58.0	56.9	52.0	45.2	38.8	-	-	-	29
33	58.0	58.0	58.0	58.0	55.3	48.7	42.5	36.8	32.2	-	-	33
39	-	53.8	55.1	54.7	52.2	42.8	37.9	33.3	29.8	23.6	-	39
46	-	44.8	45.6	45.2	43.9	37.7	34.0	30.2	27.1	22.9	-	46
52	-	-	37.3	36.8	35.5	35.1	29.8	27.3	24.9	21.6	-	52
59	-	-	31.3	30.9	29.5	30.4	27.1	24.5	22.9	20.1	-	59
65	-	-	-	26.0	26.9	25.8	24.7	22.3	20.7	18.5	-	65
72	-	-	-	22.5	23.1	22.0	22.3	20.5	19.2	17.0	-	72
79	-	-	-	-	20.3	19.2	19.4	18.7	17.6	15.7	-	79
85	-	-	-	-	17.9	17.6	17.0	16.5	16.1	14.8	-	85
92	-	-	-	-	12.1	15.9	14.8	14.6	13.9	13.7	-	92
98	-	-	-	-	-	14.1	13.7	12.8	12.8	12.1	-	98
105	-	-	-	-	-	11.7	12.1	11.0	11.2	10.4	-	105
111	-	-	-	-	-	-	10.8	10.6	9.9	9.0	-	111
118	-	-	-	-	-	-	-	9.7	8.6	7.9	-	118
124	-	-	-	-	-	-	-	8.6	7.5	6.8	-	124
131	-	-	-	-	-	-	-	-	6.6	6.0	-	131
138	-	-	-	-	-	-	-	-	6.0	5.1	-	138
144	-	-	-	-	-	-	-	-	-	4.4	-	144
151	-	-	-	-	-	-	-	-	-	3.7	-	151
157	-	-	-	-	-	-	-	-	-	-	-	157

# MS

47,000 lb      26.6 ft x 23.6 ft      360°      85 %

												
	39.0 ft	53.1 ft	66.9 ft	81.0 ft	95.1 ft	109.3 ft	123.0 ft	132.9 ft	148.3 ft	164.0 ft		
ft	1,000 lb											ft
10	58.0	58.0	58.0	-	-	-	-	-	-	-	-	10
11	58.0	58.0	58.0	58.0	-	-	-	-	-	-	-	11
13	58.0	58.0	58.0	58.0	-	-	-	-	-	-	-	13
15	58.0	58.0	58.0	58.0	-	-	-	-	-	-	-	15
16	58.0	58.0	58.0	58.0	58.0	-	-	-	-	-	-	16
19	58.0	58.0	58.0	58.0	58.0	58.0	-	-	-	-	-	19
23	58.0	58.0	58.0	58.0	58.0	58.0	-	-	-	-	-	23
26	58.0	58.0	58.0	58.0	58.0	55.3	48.1	35.1	-	-	-	26
29	58.0	58.0	58.0	58.0	56.9	52.0	45.2	38.8	-	-	-	29
33	58.0	58.0	58.0	58.0	55.3	48.7	42.5	36.8	32.2	-	-	33
39	-	49.8	51.6	50.9	49.6	42.8	37.9	33.3	29.8	23.6	-	39
46	-	40.1	40.6	40.1	38.8	37.7	34.0	30.2	27.1	22.9	-	46
52	-	-	33.1	32.4	32.2	32.2	29.8	27.3	24.9	21.6	-	52
59	-	-	27.6	26.9	27.8	26.7	26.7	24.5	22.9	20.1	-	59
65	-	-	-	24.0	23.6	22.7	22.7	21.8	20.7	18.5	-	65
72	-	-	-	20.7	20.3	20.3	19.4	19.0	18.5	17.0	-	72
79	-	-	-	-	17.6	17.6	17.2	16.3	15.9	15.7	-	79
85	-	-	-	-	15.9	15.4	15.0	14.1	14.3	13.4	-	85
92	-	-	-	-	12.1	13.7	13.2	13.0	12.3	11.5	-	92
98	-	-	-	-	-	12.1	11.5	11.5	10.6	9.7	-	98
105	-	-	-	-	-	10.6	10.1	10.1	9.3	8.4	-	105
111	-	-	-	-	-	-	8.8	8.8	7.9	7.1	-	111
118	-	-	-	-	-	-	-	7.7	6.8	6.0	-	118
124	-	-	-	-	-	-	-	6.8	6.0	5.1	-	124
131	-	-	-	-	-	-	-	-	5.1	4.2	-	131
138	-	-	-	-	-	-	-	-	4.4	3.5	-	138
144	-	-	-	-	-	-	-	-	-	2.9	-	144
151	-	-	-	-	-	-	-	-	-	2.2	-	151
157	-	-	-	-	-	-	-	-	-	-	-	157

# MS

15,200 lb      26.6 ft x 23.6 ft      360°      85 %

	39.0 ft	53.1 ft	66.9 ft	81.0 ft	95.1 ft	109.3 ft	123.0 ft	132.9 ft	148.3 ft	164.0 ft	
ft					1,000 lb						ft
10	58.0	58.0	58.0	-	-	-	-	-	-	-	10
11	58.0	58.0	58.0	58.0	-	-	-	-	-	-	11
13	58.0	58.0	58.0	58.0	-	-	-	-	-	-	13
15	58.0	58.0	58.0	58.0	-	-	-	-	-	-	15
16	58.0	58.0	58.0	58.0	58.0	-	-	-	-	-	16
19	58.0	58.0	58.0	58.0	58.0	58.0	-	-	-	-	19
23	58.0	58.0	58.0	58.0	58.0	58.0	-	-	-	-	23
26	58.0	58.0	58.0	58.0	56.7	53.6	48.1	35.1	-	-	26
29	50.5	53.6	54.2	52.9	49.8	47.4	43.0	38.8	-	-	29
33	41.7	44.5	45.2	44.5	45.0	41.2	39.0	36.2	32.2	-	33
39	-	32.6	34.2	34.2	33.5	33.7	31.5	29.5	27.8	23.6	39
46	-	25.1	26.5	26.7	26.7	26.0	25.6	24.7	23.4	21.4	46
52	-	-	21.2	21.4	21.4	20.9	20.5	20.5	19.0	17.2	52
59	-	-	17.4	17.6	17.6	17.2	16.5	16.5	15.4	13.9	59
65	-	-	-	14.6	14.6	14.1	13.4	13.7	12.6	11.0	65
72	-	-	-	12.1	12.1	11.7	11.0	11.0	10.1	8.8	72
79	-	-	-	-	10.1	9.7	9.0	9.0	7.9	6.8	79
85	-	-	-	-	8.6	7.9	7.3	7.3	6.4	5.3	85
92	-	-	-	-	7.1	6.6	6.0	6.0	5.1	4.2	92
98	-	-	-	-	-	5.3	4.9	4.9	4.0	3.1	98
105	-	-	-	-	-	4.4	3.7	3.7	2.9	2.0	105
111	-	-	-	-	-	-	2.9	3.1	2.0	-	111
118	-	-	-	-	-	-	-	2.2	-	-	118
124	-	-	-	-	-	-	-	1.5	-	-	124
131	-	-	-	-	-	-	-	-	-	-	131

11,900 lb      26.6 ft x 23.6 ft      360°      85 %

	39.0 ft	53.1 ft	66.9 ft	81.0 ft	95.1 ft	109.3 ft	123.0 ft	132.9 ft	148.3 ft	164.0 ft	
ft					1,000 lb						ft
10	58.0	58.0	58.0	-	-	-	-	-	-	-	10
11	58.0	58.0	58.0	58.0	-	-	-	-	-	-	11
13	58.0	58.0	58.0	58.0	-	-	-	-	-	-	13
15	58.0	58.0	58.0	58.0	-	-	-	-	-	-	15
16	58.0	58.0	58.0	58.0	58.0	-	-	-	-	-	16
19	58.0	58.0	58.0	58.0	58.0	58.0	-	-	-	-	19
23	58.0	58.0	58.0	58.0	58.0	58.0	-	-	-	-	23
26	58.0	58.0	58.0	58.0	53.8	52.0	47.4	35.1	-	-	26
29	47.6	50.7	51.4	50.0	48.1	44.8	41.7	38.8	-	-	29
33	39.2	42.1	42.8	42.5	42.5	39.5	37.5	34.4	32.2	-	33
39	-	30.6	32.2	32.4	32.0	31.7	30.2	27.6	26.5	23.6	39
46	-	23.6	24.9	25.1	25.1	24.5	24.0	23.6	21.6	19.6	46
52	-	-	19.8	20.1	20.3	19.6	19.2	19.2	17.2	15.7	52
59	-	-	16.3	16.3	16.3	15.9	15.2	15.4	13.9	12.3	59
65	-	-	-	13.4	13.4	13.0	12.3	12.3	11.2	9.7	65
72	-	-	-	11.0	11.2	10.6	9.9	9.9	9.0	7.5	72
79	-	-	-	-	9.3	8.6	7.9	8.2	7.1	5.7	79
85	-	-	-	-	7.7	7.1	6.4	6.4	5.5	4.4	85
92	-	-	-	-	6.4	5.7	5.1	5.1	4.2	3.3	92
98	-	-	-	-	-	4.6	4.0	4.2	3.1	2.2	98
105	-	-	-	-	-	3.7	3.1	3.1	2.2	-	105
111	-	-	-	-	-	-	2.2	2.4	-	-	111
118	-	-	-	-	-	-	-	1.5	-	-	118



**EQUIPMENT**
**CARRIER**

<b>Outriggers</b>	Vertical and horizontal movement fully hydraulic; manual or automatic leveling alternatively; may be operated from crane cab or from either side of the carrier; 4 outrigger bases.
<b>Engine</b>	DaimlerChrysler; output: 335 kW (455 hp); max. torque 2000 Nm. Certifications in accordance with EURO MOT 3a, TIER 3 and CARB. Fuel tank: 106 gallons diesel fuel.
<b>Transmission</b>	ZF AS-Tronic, automatic transmission with integrated retarder; 12 forward speeds and 2 reverse speeds, 2-stage transfer case with offroad-gear and selectable longitudinal differential lock.
<b>Axles</b>	8 x 6 x 8. Four axles, axles 1, 2 and 4 are driven and dispose of selectable transverse lock. Axles 1, 2, 3 and 4 steered.
<b>Suspension</b>	Hydropneumatic suspension with axle load compensation, hydraulically lockable. Manual or automatic leveling alternatively; spring travel: +5,1" / -4,3".
<b>Steering</b>	Dual circuit hydro semiblock steering with emergency steering pump; rear axle steering with six different driving programs.
<b>Brakes</b>	Pneumatic dual circuit service brake with anti lock braking system (ABS), acting on all wheels; hydraulic retarder integrated into transmission as sustained-action brake; additional exhaust brake and constant throttle valve.
<b>Tires</b>	14.00 R 25.
<b>Driver's cab</b>	Two adjustable seats with seat heating, armrests and pneumatic suspension; steering wheel height and tilt adjustable; power windows; radio with CD player; tinted safety glass; engine-dependent water heating; air-condition.
<b>Stowage compartments</b>	Open storage boxes for lifting hooks and lifting tackle; lockable compartments on undercarriage side.
<b>Miscellaneous, carrier</b>	External starting installation for carrier / superstructure; two rotating beacons on driver's cab; illumination for outriggers.


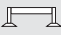


























**SUPERSTRUCTURE**

<b>Telescopic boom</b>	39.0 ft – 164.0 ft. Single cylinder telescoping system; manual or automatic telescoping alternatively. Attachments for all optional equipment; 5 sheaves in boom head for max. lifting capacity of 142,400 lb.
<b>Counterweight</b>	47,000 lb, 6 sections. Automatic rigging system, expandable to 57,500 lb max. The machine may transport 47,000 lb while maintaining vehicle width.
<b>Boom elevation</b>	1 luffing cylinder with automatic lowering brake valve.
<b>Slew unit</b>	1 slewing gear with spring-loaded multi-disc brake; four different operating modes selectable.
<b>Hoist</b>	1 lifting unit with spring-loaded multi-disc brake; integrated rotation indicator.
<b>Engine</b>	DaimlerChrysler; output: 129 kW (175 hp); max. torque 630 Nm. Certifications in accordance with EURO MOT 3a, TIER 3 and CARB.
<b>Drive</b>	Hydraulic system with power control; axial-piston dual pump and two separate pumps for slewing unit and auxiliary consuming devices; hydraulic oil cooler.
<b>Control system</b>	Pump control for four simultaneous working movements; electrical pilot controls via two four-way control levers; different control modes selectable for hydraulic circuits; individual operator settings may be stored.
<b>Operator aids</b>	Demag IC-1 with integrated electronic load moment limiter; color display; current operating conditions displayed; load charts, outrigger loads; working range limiter; fault indicator; acoustical and optical pre-warning when approaching limit switches and limit conditions; anemometer.
<b>Crane cab</b>	Tilt infinitely variable tilt up to 20°. Seat heating, sliding window in sliding door and rear; fold-out windscreen; extendable side platform; foldable front platform; tinted safety-glass; pull-down sun visor; radio with CD player; engine dependent and engine-independent warm water heating with timer; air-condition.
<b>Miscellaneous, superstructure</b>	Illumination for hoist, work area and engine compartment; two rotating beacons at the rear; guard-rail.

**OPTIONAL EQUIPMENT**

<b>HAV</b>	33.1 ft / 62.3 ft; double folding swing-away jib; manually offsettable by 20° / 40°; including transport position. Operation on HA or HAV-VA.
<b>HAV-HY</b>	33.1 ft / 62.3 ft; double folding swing-away jib; infinitely hydraulically offsettable; including transport position. Operation on HA or HAV-VA.
<b>HAV-VA</b>	26.2 ft; variable extension with swing-away jib; manually offsettable by 20° / 40°.
<b>MS</b>	4.9 ft; 2-roll runner; lifting capacity max. 58,700 lb. Operation on HA or HAV-VA, including transport position.
<b>Laterally foldable rooster sheave</b>	Enables maximum hook height at HA, including transport position.
<b>H2</b>	Hoist 2 with spring-loaded multi-disc brake; integrated rotation indicator, self-rigging possible, including transport position
<b>Additional counterweight</b>	10,600 lb; 2 sections, for a total of 57,500 lb.
<b>Counterweight NEG</b>	Version for countries with axle loads below 26,500 lb. 47,000 lb, 7 sections, automatic rigging system, expandable to 57,500 lb max.
<b>Additional counterweight NEG</b>	10,400 lb; 1 section, for a total of 57,500 lb.
<b>Drive</b>	8 x 8 x 8. Axle 3 driven additionally.
<b>Tires</b>	16.00 R 25, 17.50 R 25, 20.50 R 25 (vehicle width 9.5 ft).
<b>Rear view camera</b>	Display in driver's cab.
<b>Back up radar</b>	Acoustical and optical proximity warning in driver's cab.
<b>Additional fuel tank</b>	90 gallons; for carrier.
<b>Remote control</b>	Control of machine via wireless remote control.
<b>Fold-away bed</b>	In driver's cab.
<b>Refinery package</b>	Quick-shutdown installation for engine using air shutoff flap.
<b>Emergency operation</b>	Interface for emergency operation to recover loads when machine has failed; transformer optional.
<b>Xenon-working floodlight</b>	Xenon floodlights, adjustable from crane cabin at front bearing of boom base.
<b>Storage box</b>	Open storage box at the rear.
<b>Toolbox</b>	Large, lockable box at rear (not in combination with trailer couplings).
<b>Trailer couplings</b>	On request.
<b>Gas heater</b>	Trumatic, for crane cabin.
<b>Stowing area for hook blocks</b>	Behind driver's cab; for storage of 1-sheave or 3-sheaves hook block.
<b>Position warning light</b>	Dual obstacle beacon, red. Operation on main boom and all extensions.
<b>Further optional equipment on request!</b>	

**KEY**

	Counterweight
	Lifting capacities on outriggers – 360°
	Radius
	Main boom
	Swing-away jib
	Variable extension
	Axle loads
	Mechanism
	Tires
	Hook block
	Hoist
	Dolly
	Travel speed
	Gradeability – road
	Gradeability – off road
	Slewing
	Boom telescoping
	Boom elevation
	Workings speeds
	Max. line pull
	Rope diameter
	Rope length
	Number of sheaves
	Number of lines
	Possible load of hook block
	Weight of hook block
	Distance head sheave axle – hook ground
	Number of sheaves in boom head

## NOTES TO LIFTING CAPACITY

Ratings are in compliance with ISO 4305.  
Lifting capacities do not exceed 85% of tipping load.

Weight of hook blocks and slings is part of the load, and is to be deducted from the capacity ratings.  
Consult operation manual for further details.

**Note:** Data published herein is intended as a guide only and shall not be construed to warrant applicability for lifting purposes.  
Crane operation is subject to the computer charts and operation manual both supplied with the crane.

## DISCLAIMER

Effective Date: March 2008.

Product specifications and prices are subject to change without notice or obligation. The photographs and/or drawings in this document are for illustrative purposes only. Refer to the appropriate Operator's Manual for instructions on the proper use of this equipment. Failure to follow the appropriate Operator's Manual when using our equipment or to otherwise act irresponsibly may result in serious injury or death. The only warranty applicable to our equipment is the standard written warranty applicable to the particular product and sale and Terex makes no other warranty, express or implied. Products and services listed may be trademarks, service marks or trade-names of Terex Corporation and/or its subsidiaries in the USA and other countries and all rights are reserved. „TEREX“ is a registered trademark of Terex Corporation in the USA and many other countries.

Copyright © 2008 Terex Corporation.



