



**ALL TERRAIN CRANE
AC 1000**

OPERATIONAL EXCELLENCE



**OPTIMIZED ROI IN THE
1200T
CAPACITY CLASS**

WORKS FOR YOU.™

THE BENCHMARK FOR HEAVY LIFTING

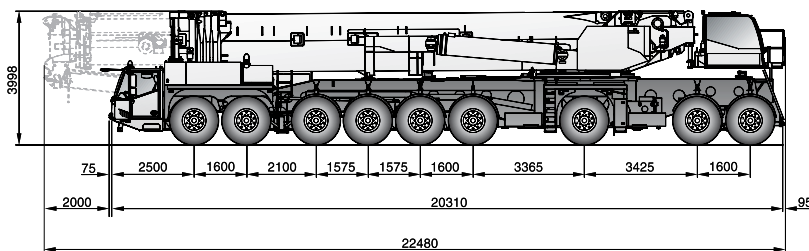
Stronger, faster, higher

The Terex AC 1000 handles all your heavy lifting. And that leaves you more room to move.

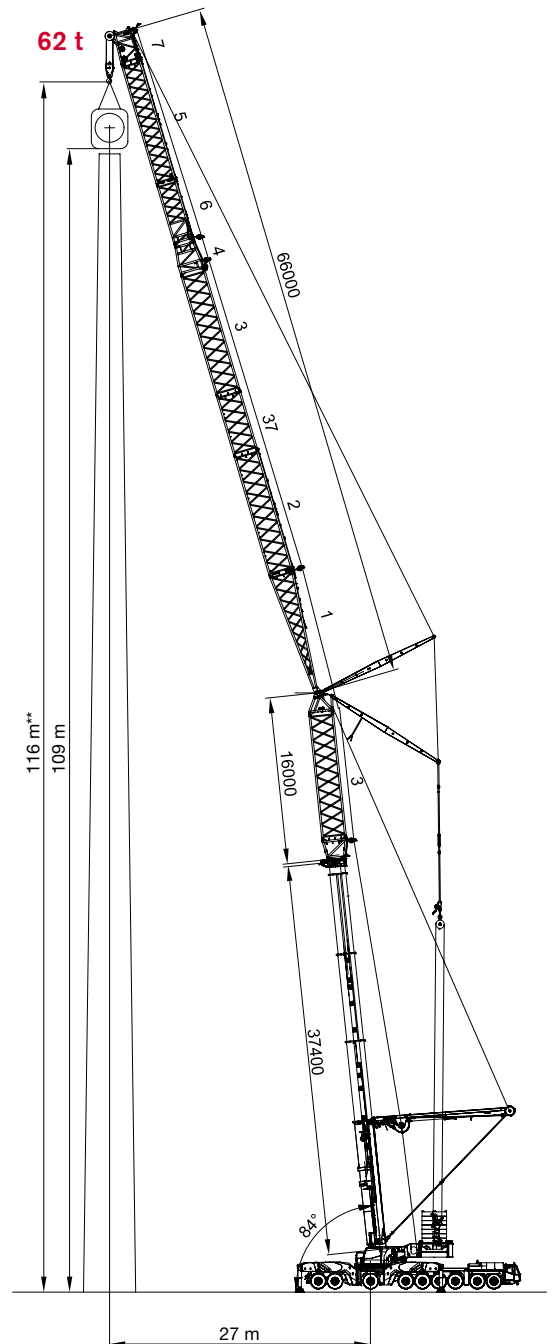
The AC 1000 is the world's largest easy-rigging mobile crane that can be driven on the road with its 50 m main boom attached. With 9 axles, a maximum lifting capacity of 1200 metric tonnes and a system length of 163 meters, this unique flagship of all terrain cranes sets the standard for versatile, heavylifting cranes. Ideal applications for the AC 1000 include the erection of wind turbines, tower cranes and the placement of major equipment on high-rise buildings.

Features:

- ▶ Modular 50 m/100 m main boom; 160 m system length, one of the longest in its class
- ▶ Machine is unique in heavy lift field
- ▶ SSL technology („Sideways SuperLift“) for increased lifting capacity
- ▶ Outstanding maneuverability: 18 x 8 x 18 drive train, all-axle steering (6-9 electronically controlled)
- ▶ Cost-effectiveness: short rigging times, optimum mobility
- ▶ High residual value is a general characteristic of Terex All Terrain Cranes
- ▶ Maximum weight performance and lifting capacity due to excellent ratio of crane weight to hoisting capacity
- ▶ Star-type outrigger system for high lifting capacities
- ▶ Worldwide operation: quick connections as standard equipment enable rapid implementation of axle loads of down to 9 t (i.e. total weight of up to 80 t)



Length: 20.48 m
Height: 3.99 m
Width: 3.00 m



AC 1000 TYPICAL WIND POWER CONFIGURATION

Over 62 t can be lifted to a height of approx. 110 m at a radius of 27 m.



OPTIMIZED ROI IN THE
1200t
CAPACITY CLASS

- ▶ Roadability
- ▶ Compactness
- ▶ Configuration versatility

ON THE ROAD AGAIN

Efficient transport

Designed for cost-effective transport, because relocating cranes efficiently saves money – and lifts your bottom line. The Terex AC 1000 has excellent roadable configurations and crane attachments that allow for ideal transport. So this boom-on crane can be on the road quickly: no need for time consuming approvals for special vehicles. Normal tractor-trailer combinations can handle a maximum component weight of up to 26 t – and that reduces transport costs.

Quickly ready for work

No mobile crane in this class can be rigged faster than the AC 1000, which can lift 30 t (60 t with SSL) to a height of 100 m in record time. Thanks to an efficient rigging process, the crane can be ready to operate almost immediately. Why? Two reasons: First, the AC 1000 only needs one lifting operation for the counterweight frame, including winches, base plate and two counterweight slabs. And second, the process is accelerated by a patented system for rigging the luffing jib. The 50 m boom can be enlarged to 100 m by fast assembly of the additional boom insert section.

Excellent maneuverability

Terex has developed a variable steering system for its all terrain cranes that permits them to steer all axles (e.g. crab steering). This speed-dependent, electronically controlled rear-axle steering ensures optimal directional stability. In 2001, Terex was the first manufacturer to implement active rear-axle steering in cranes. Today, it remains a benchmark for the industry.

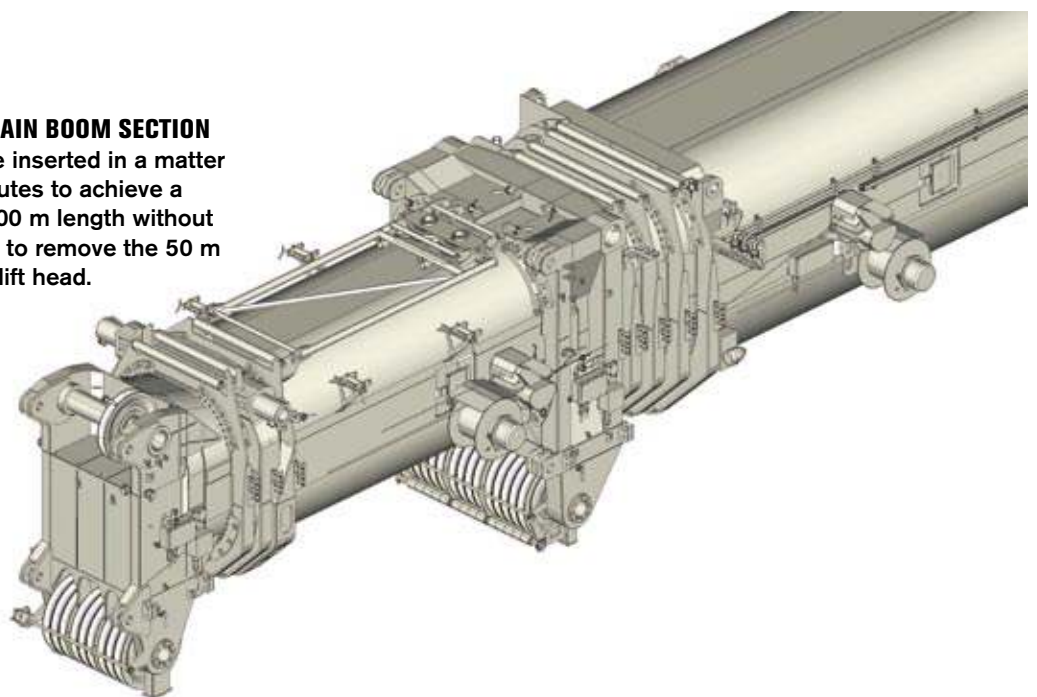
On-site mobility

At the construction site, the AC 1000 is almost completely mobile even without derigging. This means an entire operational weight of 288 t, and everything that goes along with it: 50 m boom, four outriggers, counterweight frame, 90 t counterweight, SSL, luffing jib and runner. Fitted with 445/95R25 tires, this unique mobility makes the AC 1000 the ideal choice for wind turbine installations.



ROAD MOBILE CRANE
with 50 m boom.

2ND MAIN BOOM SECTION
Can be inserted in a matter
of minutes to achieve a
total 100 m length without
having to remove the 50 m
heavy lift head.



LIFETIME PERFORMANCE

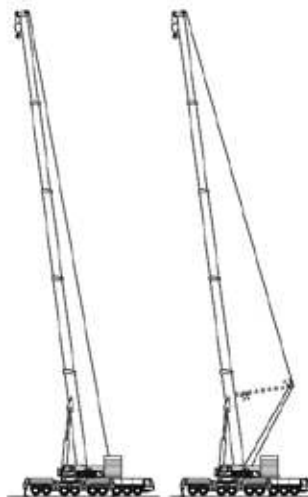
Every feature of a Terex All Terrain Crane is an asset with high resale value supported by quality workmanship and components. Separately painted components provide protection against rust and are designed for long service life. The same goes for the high-quality welding that helps eliminate the risk of corrosion. And because its customer-focused design maximizes mobility and versatility, the AC 1000 can be used for a wide range of jobs.

Powerful and economical

Terex installs efficient engines from well-known suppliers, built for industrial use. The electronic control system of the AC 1000's engine provides powerful operation at high torque and efficient fuel consumption.

Features:

- ▶ Low emission levels that comply with EuroMot3b/Tier4i regulations
- ▶ Electronic diesel injection system that reduces smoke and emissions
- ▶ Internal intake air pre-heater for outside temperatures below 5°C
- ▶ High-torque engine for faster operation
- ▶ Single engine principle for combined movement under load without power loss



MAIN BOOM
50 m without SSL
100 m with SSL.

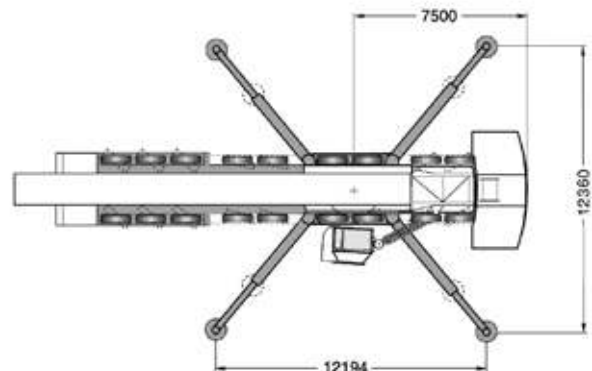
Star-type outriggers

To manage weight, Terex cranes with lifting capacities of over 500 metric tonnes are equipped with star-type outriggers. This helps keeping the total weight of the chassis relatively low, as only the „pot“ and the outriggers need to be designed with sufficiently massive cross-sections to withstand the highest forces, benefiting in higher lifting capacities.

Simply versatile

This All Terrain Crane can be configured in many different ways. In addition to the main boom itself, the following equipment can be used to enhance the AC 1000:

- ▶ Additional 50 m boom section
- ▶ SSL
- ▶ Light fixed jib (with offset section and SSL)
- ▶ Strong fixed jib (with offset section and SSL)
- ▶ (Strong) Luffing jib, length up to 126 m (optimized for lifting capacity and/or with offset section and SSL)
- ▶ Runner
- ▶ Third winch



STAR-TYPE OUTRIGGERS
Provides more capacity, high strength and great stability.



Counterweight intelligence

Terex Crawler Cranes and Terex All Terrain Cranes from the AC 350 to the AC 1000 all have counterweights with the same standard weight and shape. This means you can store counterweights at different locations and use them on different Terex cranes – thereby saving money on costly logistics.

Features:

- ▶ Identical Terex counterweights can reduce transportation costs
- ▶ It is possible to combine both box-type and cast-type slabs to build up a counterweight
- ▶ Standard 10 t counterweight slabs can be used to build up a counterweight



COUNTERWEIGHT FRAME

Terex counterweight slabs can be easily installed due to standardized weight and design.

EVERYTHING UNDER CONTROL

Crane cab

Efficiency and productivity depend directly on working conditions. With its air-cushioned seats and an ergonomic layout, the large (1,1 m width) crane cab immerses the operator into a comfort zone. Fitted with panoramic safety glass and a fold-out windshield, the entire cab can be tilted backwards up to 20° for fatigue minimizing operation. Air-conditioning and auxiliary heating are included as standard features.

IC-1 control system

The integrated IC-1 crane control system permits intuitive operation via touchscreen interface. It provides reliable execution of even the most demanding operations by maximizing accuracy and ease-of-operation.

The control system is equipped with a working range limiter that enables the operator to set the crane's radius, height limit, radius limit, and the "virtual walls" which assist in safe crane operation.

Features:

- ▶ Fast and intuitive handling thanks to touchscreen
- ▶ All load charts are stored in the IC-1 software
- ▶ Easy configuration, based on load and radius input
- ▶ 14 standard languages
- ▶ Customizable configuration designed specifically for the needs of each crane operator
- ▶ Working range limiter
- ▶ Wind speed indicator
- ▶ Nominal lifting capacity and hook loads
- ▶ Boom length and angle
- ▶ Radius
- ▶ Outrigger load
- ▶ Integrated diagnostic module
 - ▶ Pressure of the pilot system
 - ▶ The given electric power values of the proportional valves





Safety first

The AC 1000 offers a number of features that make work on site safe – for crane operators, their co-workers and the material they handle.

Features:

- ▶ Extensive walkways, handrails and access ladders provide safe access to the superstructure and the counterweight frame and address the risk of working at height – standard equipment on all Terex cranes.
- ▶ Work at height fall arrest system
- ▶ Terex easy connect luffing jib considerably reduces the need to work at heights.
- ▶ Well-positioned mirrors ensure a good field of vision
- ▶ Carrier rear-view camera: images viewed on the display screen in the carrier cabin
- ▶ Monitoring of winch units
- ▶ Working lights installed at key locations:
 - ▶ Outrigger lighting on both sides of the carrier
 - ▶ Work area lighting
 - ▶ Winch lighting
 - ▶ Engine compartment lighting



ADVANCED BOOM TECHNOLOGY

Boom system

The ability to customize the Terex boom system for each job site makes it possible to use the AC 1000 in many different applications. With its patented open head and sheaves, the boom permits easy insertion of the extra section. Designed for excellent performance, the versatile Terex boom system offers ideal characteristics for every application.

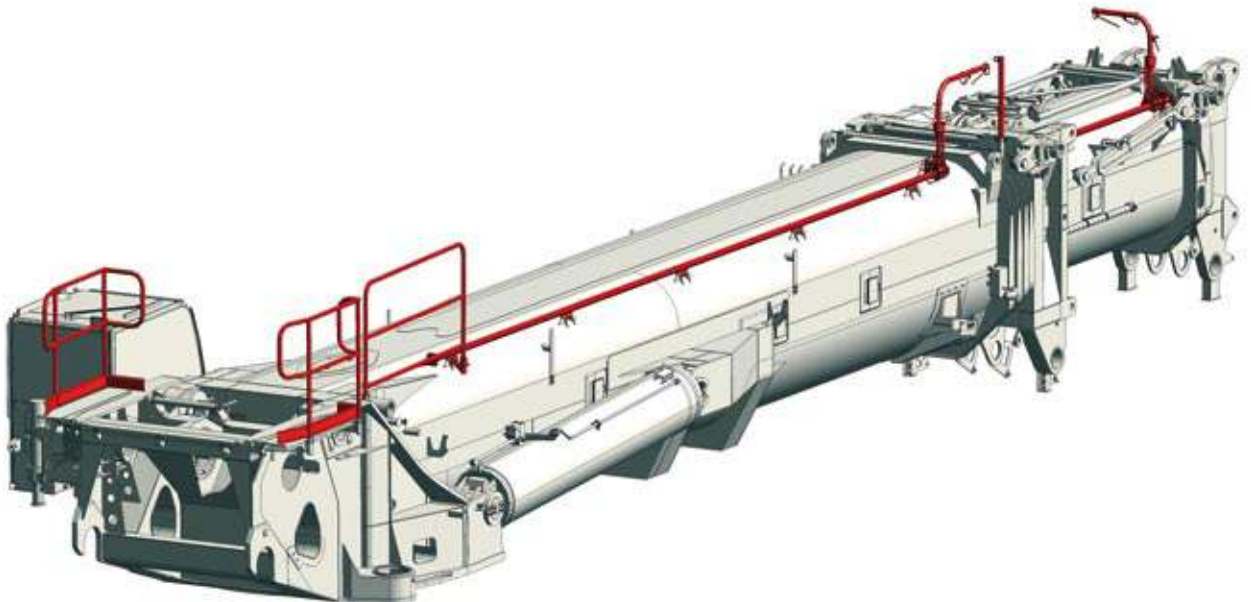
The large number of main boom extension options available provides a high level of flexibility for working in all applications. The system focuses on cost-effective crane operation: certain extension modules are assembled with common components that can be easily transported together.

The transport of jibs (where practical) has been optimized to reduce the number of trucks needed. For example the jibs can be transported inside each other.

Features:

- ▶ Sideway Superlift (SSL) technology for increased hoisting capacity
- ▶ Fixed jib with integrated offset section
- ▶ Luffing jib 1 Swan neck to extend the main boom can be offset continuously with the hoisting gear and is assembled with the fixed jib's components. The front part of the jib can be offset in order to reach over unusually high projections, a patented Terex solution also known as the „swan neck“.
- ▶ Luffing assembly jib
- ▶ With additional modules, a windmill kit can be assembled

BOOM DOLLY
Optional work at height fall arrest system installed on main boom.





SERVICES

We're always there for you

No matter where you are, you can always count on our worldwide network, fast spare parts delivery and well trained staff. All with one goal in mind: to maximize your productivity when you use our cranes at the construction site.

Spare Parts

Original Terex parts ensure a level of quality that matches the outstanding workmanship of your crane – or in other words, the quality you need at the construction site. Only original Terex parts meet the demanding standards set by Terex. Only original Terex parts can guarantee that your Terex crane will continue to run dependably. And our worldwide logistics network for spare parts means we're always there for you: your original Terex parts will be delivered quickly, whenever you need them.



Your contact information

Terex Cranes

Global Marketing

c/o

Terex Cranes Germany GmbH

Dinglerstraße 24

66482 Zweibrücken

Germany

Tel. + 49 (0) 6332 830

E-Mail info.cranes@terex.com



**Contact us to learn
how we can work for you.**

www.terex.com/cranes

October 2012. Product specifications and prices are subject to change without notice or obligation. The photographs and/or drawings in this document are for illustrative purposes only. Refer to the appropriate Operator's Manual for instructions on the proper use of this equipment. Failure to follow the corresponding Operator's Manual when using our equipment or to otherwise act irresponsibly may result in serious injury or death. The only warranty applicable to our equipment is the standard written warranty applicable to the particular product and sale and Terex makes no other warranty, express or implied. Products and services listed may be trademarks, service marks or trade-names of Terex Corporation and/or its subsidiaries in the USA and other countries. All rights are reserved. Terex is a registered trademark of Terex Corporation in the USA and many other countries.

Please note: Not all products are available in all countries according to legal requirements.
Please consult your local Terex distributor for more information.
Copyright Terex Corporation 2012

Brochure Reference:
TC-PB-E-AC 1000-10/12



TEREX®

WORKS FOR YOU.™