

液压式履带起重机
HYDRAULIC CRAWLER CRANE
QUY100A

抚顺挖掘机制造有限责任公司

地址：辽宁省抚顺市顺城区双阳路2号

邮编：113126

网址：www.cnfuwa.com

销售公司电话：+86-413-7647 989/7642 419

传真：+86-413-7642 419

售后服务中心电话：+86-413-7641 727

电子信箱：sale@cnfuwa.com

进出口公司电话：+86-413-7649 117/7642 558

传真：+86-413-7642 766

电子信箱：export@cnfuwa.com

免费服务电话：800-890-0009

FUSHUN EXCAVATOR CORPORATION LTD.

Add: No.2 Shuangyang Road, Shuncheng District, Fushun Liaoning, China

p.c.113126

http://www.cnfuwa.com

China Market Sale Dept. Tel: +86-413-7647 989/7642 419

Fax: +86-413-7642 419

After sale Service Dept. Tel: +86-413-7641 727

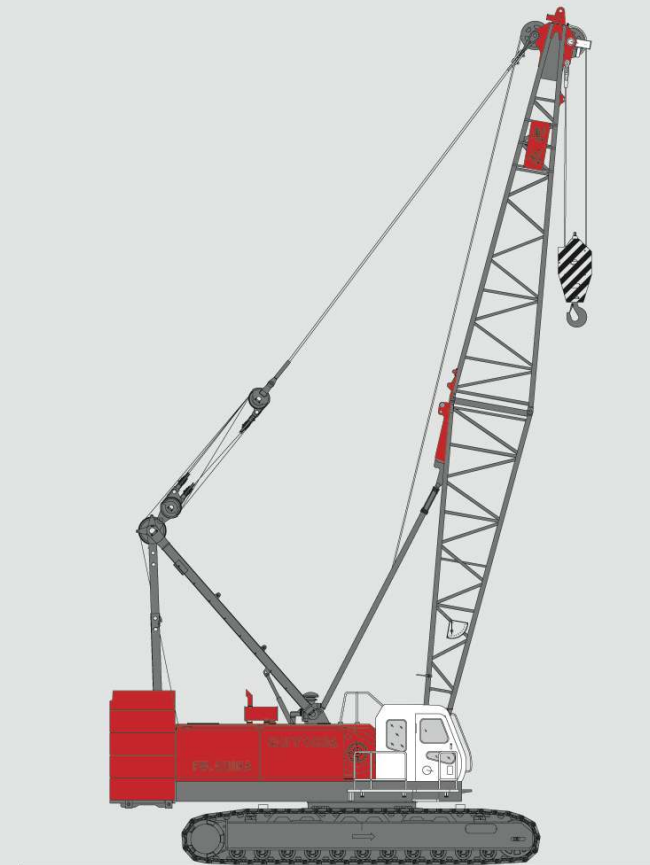
E-mail: sale@cnfuwa.com

Import & Export Dept. Tel: +86-413-7649 117/7642 558

Fax: +86-413-7642 766

E-mail: export@cnfuwa.com

技术参数如有更改恕不另行通知
Specifications may vary without prior notice





目录 Content

安全装置	Safety Devices	01-02 >>
详细说明	Specifications	03-04 >>
臂杆组合 主要技术参数 总体尺寸	Boom Combination Technical Data Overall Dimensions	05-06 >>
总体尺寸 主臂和副臂组合	Overall Dimensions Boom and Jib Combinations	07-08 >>
标准主臂工况载荷表 标准主臂工况作业范围	Load Chart (Standard Boom) Working Range(Standard Boom)	09-10 >>
加长主臂工况载荷表 加长主臂工况作业范围	Load Chart (Runner) Working Range (Runner)	11-12 >>
固定副臂工况载荷表	Working Range(Fixed Jib)	13-14 >>
载荷表说明 主要零部件运输尺寸	Notes for Load Chart Dimensions for Transportation	15-16 >>
主要零部件运输尺寸	Dimensions for Transportation	16-19 >>





安全装置

吊钩和臂架防过卷装置

吊钩和臂架防过卷装置是用于防止因过卷导致的机器损坏或后翻事故。

吊钩防过卷装置

当起重物提升到一定高度时, 将重锤托起, 则微动开关由弹簧复位, 开关接点断开, 控制继电器动作使蜂鸣器报警, 报警指示灯闪亮, 同时, 控制器锁定起重物的提升, 起重物提升动作自动停止。

臂架防过卷装置

臂架后设有防倾杆, 通过这个装置来设置臂上限角度由力矩限制器和主臂上限位开关检测控制。
当主臂 \geq 上限位角度 80° 时, 力矩限制器声光连续报警, 并输出信号。主臂停止升臂。同时, 主臂上限位开关动作, 主臂上限位开关回路被切断, 主臂停止升臂。

力矩限制器

限制器对起重机作业进行实时监控, 当车运输或者工作的时候由限制器来测试各种参数再由显示器反映给驾驶员。在各种工况下, 通过按键设置工况参数。

当额定起重力矩的 $0\% \leq$ 起重力矩 $<$ 额定起重力矩的 90% 时, 力矩限制器显示屏上, 力矩百分比条形码绿色点亮, 限制器无声音报警。

当额定起重力矩的 $90\% \leq$ 起重力矩 $<$ 额定起重力矩的 100% 时, 力矩限制器显示屏上, 力矩百分比条形码黄色预警, 同时限制器发出声音断续报警。

当额定起重力矩的 $100\% \leq$ 起重力矩 $<$ 额定起重力矩的 105% 时, 力矩限制器显示屏上, 力矩百分比条形码红色报警, 同时限制器发出声音连续报警。

当起重力矩 \geq 额定起重力矩的 105% 时, 力矩限制器显示屏上, 力矩百分比条形码红色报警, 限制器发出声音连续报警, 同时输出信号, 主、副钩停止提升, 臂停止增幅动作。

负载率指示灯

为了便于现场人员了解机械载荷情况, 采用了与交通信号相同的3色负载率指示灯。同时配备了司机与吊装指挥人员联系用的对讲机。

风速仪

风速仪-臂架顶部的风速传感器装置用于检测风速, 力矩限制器显示风速。通过对风速的测试来给驾驶员一个参考, 进而能确定车的工作环境。

制动器和锁定装置

制动器 本起重机设有主、副卷筒制动器、主、副变幅卷筒制动器, 回转制动器。

锁定装置 本起重机设有主、副卷筒棘爪锁定装置、主变幅卷筒棘爪锁定装置、回转锁定装置。

拉力传感器、角度传感器

拉板上设有拉力传感器, 用于检测拉力。
主臂根部装有角度传感器, 用于检测主臂的角度。

水平仪

该装置用于检测机体与水平地面的角度, 用来保证机器工作地面符合要求。

角度盘

主臂架根处设有机械式角度盘, 在吊运和提升的时候用来显示臂架当前角度, 给驾驶员一个详细的参考。

防倾杆限位保护

基础臂节设有防倾杆, 而这个装置的作用就是在提升和吊运的情况下, 如果重物的质量很大而且在不定风速的情况下, 很有可能使主臂往后过倾。这个装置避免了此类情况的发生。

回转报警

臂架变幅接近极限位置减速控制, 回转机构设有蜂鸣器, 当接近极限位置的时候, 这个装置会发出声音断续报警。

Safety Device

Hook and boom over-choist prevention devices

Hook and boom over-choist prevention devices are used for preventing the crane from the accidents because of the over-choist.

Hook over-choist prevention device

When the hook lifts up to certain height and touches the plumb, the limit switch shall be disengaged by the reposition spring, and then the switch cuts off the control circuit. The control relay makes the buzzer alarm and the indicator lights up. At the same time, the rise of the hook will stop automatically.

Boom over-choist prevention device

The boom upper limit angle is controlled by moment limiter and boom upper limit switch.
When the boom upper limit angle is more than 80° , the moment limiter will continuously alarm and send out the signal. The rise of boom will stop. At the same time, the limit switch is cut off. The boom stops rising.

Moment limiter

The device monitors the work of the crane. You can press the key to set the parameters of all working conditions.
When the actual load is less than 90% of rated load, the screen shows load proportional bar in green color, and no warning alarm from the safe load indicator.
When the actual load exceeds 90% of rated load while is less than 100% of rated load, the screen shows yellow color and an intermittent warning alarm sounds.
When the actual load exceeds 100% of rated load while less than 105% of rated load, the monitor screen shows red color and the safe load indicator gives continuous warning alarm, and output control signal.
When the actual load exceeds 105% of rated load, the monitor screen shows red color and gives out a continuous warning alarm, at the same time the safe load indicator put out control signal to stop the hoisting action of main and auxiliary hooks and boom.

Three-color load indicator

The three-color load indicator is installed on the crane in order to inform the personnel on site of the current situation. The driver and the signal personnel are equipped with the interphone for the convenience of contact.

Anemometer

Anemometer- the wind speed sensor is installed on the top of boom to test wind speed. The moment limiter displays wind speed. The driver can specify the working environment referring to the test of wind speed.

The brakes and locking devices

Brakes: the brakes on the main and aux. drums, the brakes on the main and aux. derricking drums, slewing brake.
Locking devices: main and auxiliary winch pawls, main derricking drum pawls and slew locking device.

Pull sensor, angle sensor

The pull sensor is installed on the pendant bar to test the pull.
The angle sensor is installed on the boom foot to test boom angle.

Gradiometer

The device is used for testing the angle between the machine and the ground to ensure the conditions of the ground meet the requirements.

Angle scale

The angle scale is installed on the boom foot to show the current angle of boom when the crane is lifting the load.

Limit protection of back stop

The back stop is installed on the boom foot to prevent the tipping-over of the boom due to the heavy load and uncertain wind speed.

Swing alarm

The buzzer is installed on the swing device. The buzzer may sound continuously when the boom derricking reaches limit position.



详细说明

上车结构

动力装置

型号 QSL-9进口康明斯电控柴油机。
类型 水冷式, 直喷, 带涡轮增压器。
排量 8.9L

额定功率 209kw/2000rpm
最大扭矩 1300N.m/1500rpm
燃油油箱容量 200L
液压油箱容积 500L

液压系统

发动机在采用变量双主泵+回转泵+补油泵+伺服泵+冷却泵, 一组M7-LUDV多路阀, 该系统具有泵控系统的永远全工作范围控制的精密控制(优于阀控), 同时能实现行走、变幅、回转和卷扬复合动作时的组合。油冷却器独立温控散热, 回转独立闭式控制, 各卷扬独立系统控制。

电子监控系统

电子监控器适时显示并具有故障查询功能, CAN-BUS总线控制。

主、副提升卷扬装置

主、副提升卷扬装置, 由变量柱塞马达通过行星减速机驱动。湿式片式常闭制动器。

主提升卷扬装置

卷筒 节圆直径 $\phi 610\text{mm}$
钢丝绳直径 $\phi 26\text{mm}$
钢丝绳长度 285m
最大绳速 116m

副提升卷扬装置

卷筒 节圆直径 $\phi 610\text{mm}$

钢丝绳直径 $\phi 26\text{mm}$

钢丝绳长度 210m
最大绳速 116m

主臂变幅系统

由液压变量柱塞马达通过行星减速机驱动。湿式片式常闭制动器。

卷筒 节圆直径 $\phi 440\text{mm}$

钢丝绳直径 $\phi 20\text{mm}$

钢丝绳长度 230m

最大绳速 54m

托绳卷扬机

钢丝绳直径 $\phi 10\text{mm}$
钢丝绳长度 200m

回转系统

由2个马达通过行星减速机带动齿轮驱动, 可旋转 360°

速度 0-1.96转/分钟

四个位置止动锁锁定。

驾驶室

司机室与机罩外表面都是烤漆。宽度920mm, 前窗采用大弧形面, 视野好。带有空调和暖风机, 雨刷器、车载VCD系统。大屏幕电子监控器和力矩限制器, 采用LED显示器显示风速, 可调座椅等。还采用了扶手椅式控制手柄, 十字控制, 能够以舒适的姿势进行操作。配置了空调装置, 使司机能够在舒适的环境下工作。

平衡重

平衡重采用焊接形式, 由四块单配重组成, 总重为34吨。

下车结构

底座

用高强度板焊接X型框架结构, 与履带架采用动力销连接, 便于快速安装和拆卸。它们的特点是外形美观, 抗扭抗弯性能好。

支重轮装置

每侧各有11个, 所有的支重轮均装有铜套和浮动式密封以及耐磨润滑油。

下机架支撑油缸装置

四个液压顶升油缸连接在下机架的支撑梁上进行伸/缩动作

履带板

左、右履带行走装置共有110块履带板, 每块履带板的宽度为1015mm。履带板的张紧程度可以通过液压千斤顶进行调节, 调节垫片的位置达到理想的张紧度。

履带动力

独立的液压驱动系统嵌入履带架内。每侧液压驱动系统包含了一个液压马达并通过行星减速机带动驱动轮。液压马达和减速机嵌入履带结构内, 不超出履带宽度。

行走速度 0.9/1.3千米/小时

爬坡能力 30% (17°)

作业装置

臂架主桁管采用进口高强度管, 变幅装置采用钢压扣钢丝绳, 大大提高了有效载荷。

主臂

臂架为中间等截面, 两端变截面的空间桁架式结构, 钢管焊接。标准臂从16米—73米

固定副臂的组成

固定副臂与主臂有两种角度: 10° 和 30° ; 主臂和副臂组成: 主臂为40—61m的标准臂, 副臂为13米—25米。

吊钩

100吨吊钩 50吨吊钩 9吨吊钩

Specifications

Superstructure

Power device

Model: QSL-9 diesel engine imported from Cummins
Type: water-cooled, direct fuel injection, with turbocharger actuator
Displacement: 8.9L
Rated power: 209kw/2000 rpm
Maximum torque: 1300N.m/1500rpm

Capacity of fuel box: 200L
Capacity of hydraulic oil box: 500L
Hydraulic system
The system adopts variable displacement double main pump, slewing pump, oil filling pump, servo pump, cooling pump and M7-LUDV multi-circuit valve. The pump system is superior to valve control. The system can realize compound action: travel, derricking, slewing and lifting. The oil cooler functions well. Slewing is controlled independently and all lifting devices are also controlled independently.

Electric monitor system

The electric monitor displays the values and has the function of troubleshooting. It is controlled by CAN-BUS.

Main /aux. hoisting device

The main and aux. hoisting devices are driven by piston motor through reduction gear. The brake type: wet, disc and closed brake
Main hoisting device
Drum: the diameter $\phi 610\text{mm}$
The diameter of wire rope: $\phi 26\text{mm}$
Length of wire rope 285m
Maximum rope speed: 116m

Aux. hoisting device

Drum: the diameter $\phi 610\text{mm}$
Diameter of wire rope: $\phi 26\text{mm}$
Length of wire rope: 210m
Maximum rope speed: 116m

Boom derricking system

The planetary reduction gear drives hydraulic piston motor with variable displacement. The brake is often closed.

Drum: diameter $\phi 440\text{mm}$
Diameter of wire rope: $\phi 20\text{mm}$
Length of wire rope: 230m
Maximum rope speed: 54m

Dragrope drum

Diameter of wire rope: $\phi 10\text{mm}$
Length of wire rope: 200m

Slewing system

The slewing system can be turned by 360° . There are two motors in the system. The planetary reduction gear drives the gear teeth.
Slewing speed: 0-1.96r/m
Four pins are locked

Cabin

The outside of cabin is painted well. The length of the cabin is 920mm. The front window is inclined and the posts are designed with the cross section with high strength. There are air-conditioner, heater, rear view mirror, wiper, stereos and fire extinguisher in the cabin. The electric monitor and moment limiter with large screen are in the cabin. The seat can be adjusted.

Counterweight

Counterweight is adopted by welding, which consists of four pieces of counterweight. The total weight is 34t.

Undercarriage

Lower frame X-type structure welded with steel plate which has high strength. The Lower frame connects side frames with drive pins for convenience of installation and disassembly. It has features: beautiful appearance and good torsion-resistance.

Track Roller Each side has 11 track rollers. All track rollers are equipped with bushings, seals and lubricating oil.

Jack-up cylinders The four hydraulic jack-up cylinders are connected with the beam.

Track shoe The left and right crawlers have 110 track shoes. The width of the track shoe is 1015mm. The tension state of track shoe can be adjusted by the hydraulic jack until the adjusting plate has the ideal position.

The Crawler drive The independent hydraulic driving system is inside the crawler frame. Every hydraulic driving system has a hydraulic motor. The hydraulic motor and planetary reduction gear in the crawler frame can not exceed the width of the track shoe.

Travel speed 0.9/1.3 km/h

Grade ability 30% (17°)

Working Equipments

The main steel pipe with high strength is imported. The derricking device adopts the pendant rope to improve the efficiency.

Main boom The insert section has the equal cross section. The top and the foot have the variable cross sections. The boom is the lattice structure welded with steel pipes. Standard boom: 16-73m

Fixed fly jib combination Two kinds of angles between main boom and fixed fly jib: 10° and 30° . Main boom and fixed fly jib: main boom 40-61m, fixed fly jib 13m-25m.

Hook 100t Hook 50t Hook 9t Hook

工况符号

The symbols of working conditions



标准主臂工况
Standard Boom



加长主臂工况
Runner



固定副臂工况
Fixed jib



臂杆组合

Boom Combination

标准主臂

最大起重量: 100吨x5.5米
最大臂杆长度: 73米

Standard Boom

Max. Lifting capacity:
100t x 5.5m
Max. Boom length:
73m

加长主臂

最大起重量: 9吨x26米
最大臂杆长度: 61米

Runner

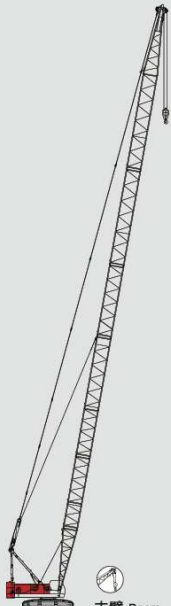
Max. Lifting capacity:
9t x 26m
Max. Boom length:
61m

固定副臂

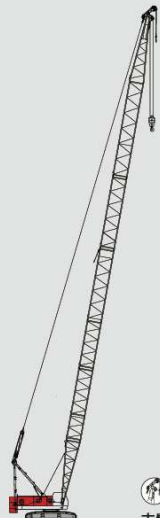
最大起重量: 13.3吨x16米
最大组合: 61米+25米

Fixed Jib

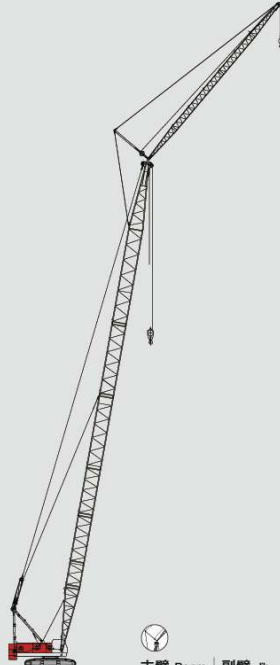
Max. Lifting capacity:
13.3t x 16m
Max. Combination:
61m+25m



主臂 Boom
16m-73m



主臂 Boom
16m-61m



主臂 Boom 副臂 Jib
40m-61m 13m-25m

主要技术参数

Technical Data

项目		长度(m)	数值
标准主臂		16~73	30°~80°
固定副臂		13~25	10° ;30°
主臂+副臂的最大长度		61+25	
吊钩配置		t	100/50/9
工作速度	钢丝绳速度	提升	m/min *高速116/57 低速82/41
		下降	m/min *高速116/57 低速82/41
	起重臂上升	m/min	*54
	起重臂下降	m/min	54
	回转速度	r/min	0~1.96
	行走速度	km/h	0.9~*1.3
主提升倍率	12	单绳拉力	8.33
爬坡能力(带基本臂, 司机室置于后方)		%	30
柴油机额定输出功率/转速		KW/rpm	美国康明斯QSL-9 209/2000
整机质量		t	103
接地比压		Mpa	0.07
配重质量		t	34
最大额定起重量		t	100
最大额定起重力矩		t.m	550

注: 带*速度是随载荷的不同而变化。

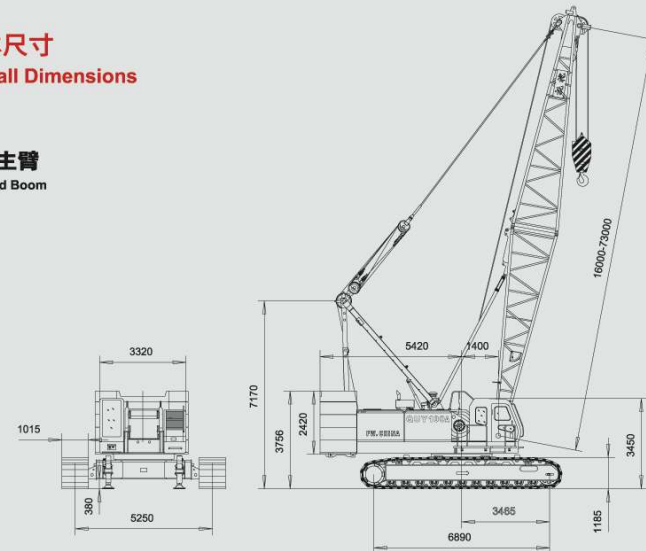
Descriptions		Length(m)	Value
Standard boom		16~73	30°~80°
Fixed jib		13~25	10°;30°
Max.length of main boom and fixed jib jib		61+25	
Kinds of hook		t	100/50/9
Working speed	Line Speed	Hoist	m/min *High116/57 Low82/41
		Lower	m/min *High116/57 Low82/41
	Boom hoist	m/min	*54
	Boom Lower	m/min	54
	Slew speed	r/min	0~1.96
	Travel speed	km/h	0.9~*1.3
Parts of line	12	Single pull	8.33
Grade ability (with basic boom and cabin on rear side)		%	30
Rated power output/rotating speed of diesel engine		KW/rpm	Cummins QSL-9 209/2000
Mass of whole machine		t	103
Ground pressure		Mpa	0.07
Counterweight		t	34
Max.rated lifting capacity(boom)		t	100
Max.rated load moment		t.m	550

Note: Speed with *may vary with the different load.

总体尺寸
Overall Dimensions

标准主臂

Standard Boom



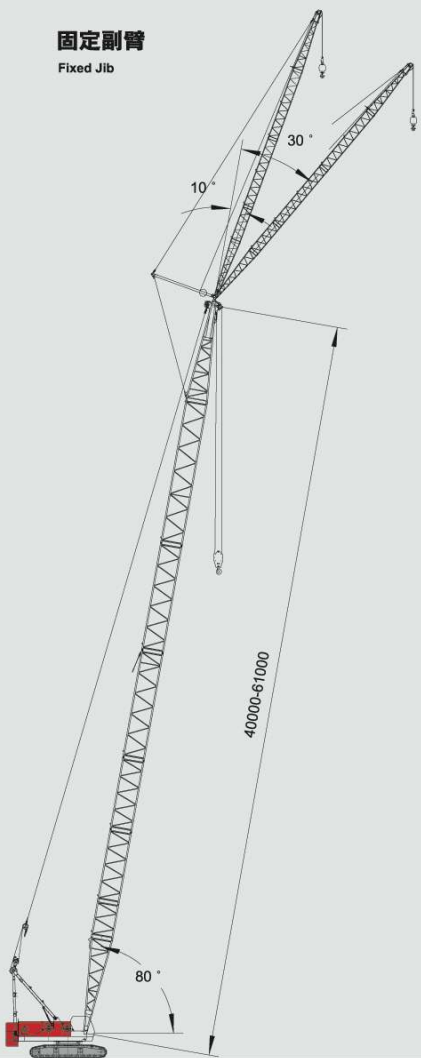


总体尺寸

Overall Dimensions

固定副臂

Fixed Jib

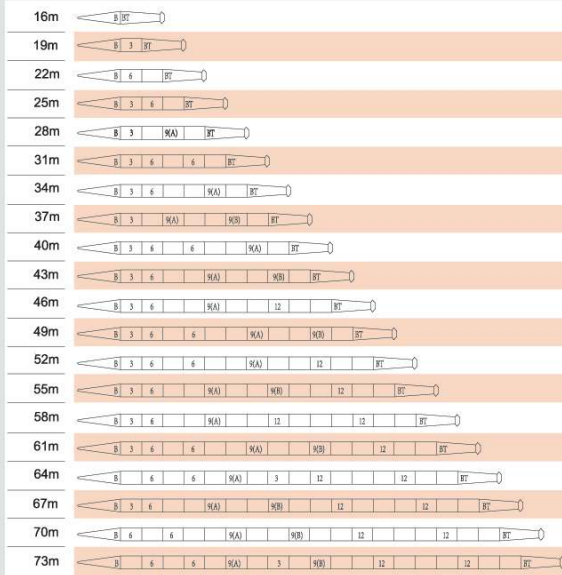


主臂和副臂组合

Boom and Jib Combinations

标准主臂工况臂节组合

Boom Combination



注解

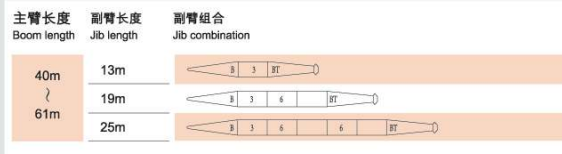
符号	臂杆长度	备注
B	8 米	8 米下节臂
BT	8 米	8 米上节臂
3	3 米	3米中间节臂
6	6 米	6米中间节臂
9(A)	9 米	9米中间节臂
9(B)	9 米	9米中间节臂
12	12 米	12米中间节臂

Note

Symbol	Boom length	Remarks
B	8 m	8m boom foot
BT	8 m	8m boom top
3	3 m	3m insert section
6	6 m	6m insert section
9(A)	9 m	9m insert section
9(B)	9 m	9m insert section
12	12 m	12m insert section

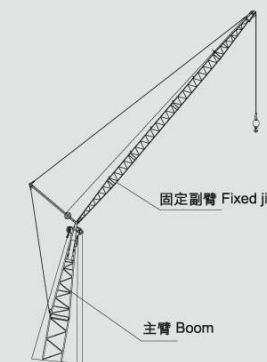
固定副臂工况臂节组合

Fixed Jib Combinations



注解

符号	副臂长度	备注
B	5米	5米下节臂
BT	5米	5米上节臂
3	3米	3米中间节臂
6	6米	6米中间节臂



Note

Symbol	Jib length	Remarks
B	5m	5m jib foot
BT	5m	5m jib top
3	3m	3m insert section
6	6m	6m insert section



标准主臂工况载荷表

Load Chart (Standard Boom)

16m-73m 360° 34t

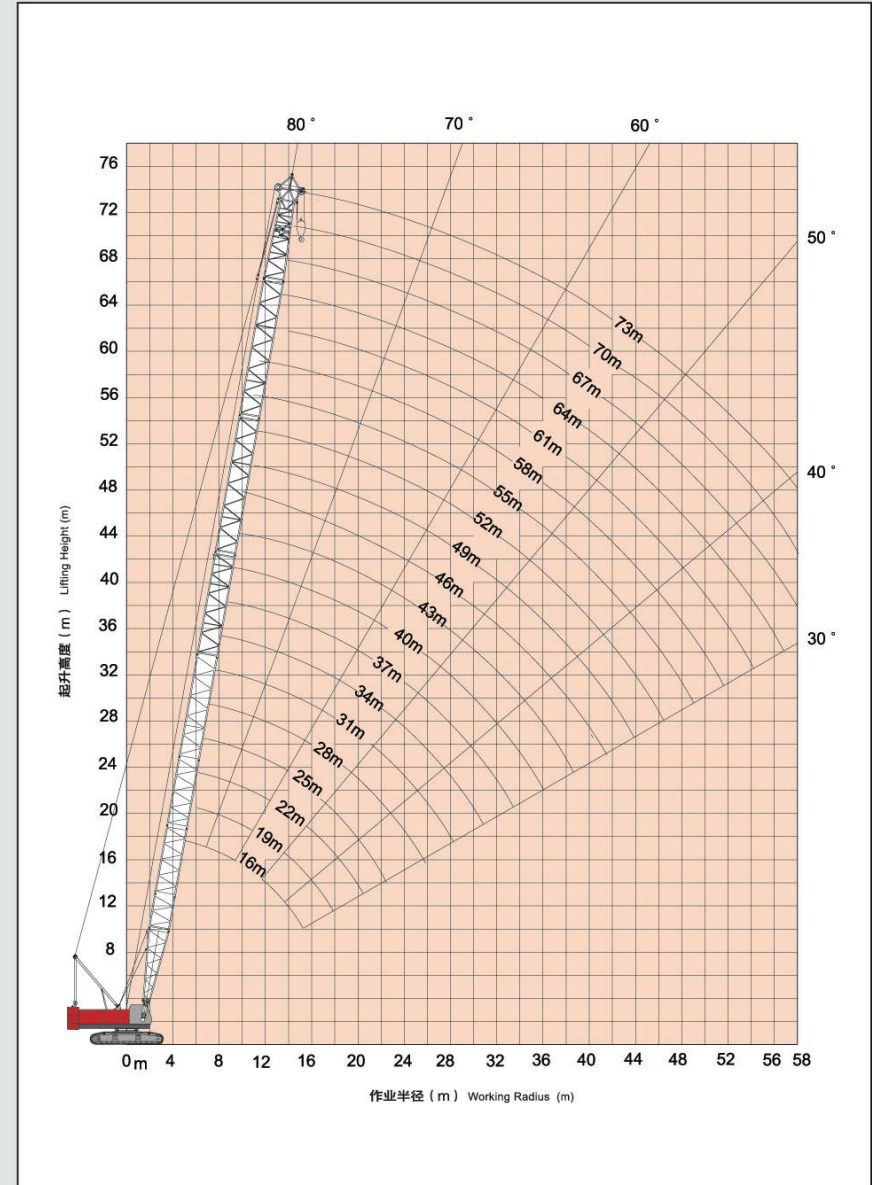
Height (m)	16.0	19.0	22.0	25.0	28.0	31.0	34.0	37.0	40.0	43.0	Height (m)
5	100	100									5
5.5	100	95	90.3								5.5
6	87.1	83.9	80.9	77							6
7	70.1	67.8	65.8	63.8	61.9	58.9	52.6				7
8	58.6	56.9	55.3	53.8	52.4	50.9	49.6	47.2	42.7		8
9	49.2	48.9	47.7	46.5	45.3	44.2	43.1	42	40.9	39	9
10	42.3	42.1	41.9	40.9	39.9	38.9	38	37.1	36.2	35.4	10
12	32.9	32.7	32.6	32.4	32.1	31.3	30.6	30	29.2	28.6	12
14	26.8	26.6	26.5	26.3	26.2	26	25.6	25	24.4	23.9	14
16	23.7	22.3	22.2	22	21.9	21.7	21.5	21.3	20.8	20.4	16
18		19.2	19.1	18.9	18.7	18.5	18.4	18.2	18	17.8	18
20			16.6	16.4	16.3	16.1	15.9	15.8	15.6	15.5	20
22			16	14.5	14.3	14.1	14	13.8	13.7	13.6	22
24				13.5	12.8	12.6	12.4	12.3	12.1	12	24
26					11.6	11.3	11.1	11	10.8	10.7	26
28						10.2	10	9.9	9.7	9.6	28
30							9.1	8.9	8.7	8.7	30
32								8.6	8.1	7.9	32
34									7.5	7.2	34
36										6.5	36
38											38
40										5.8	40
42											42
44											44
46											46
48											48
50											50
52											52
54											54
56											56
58											58
60											60
62											62
64											64

16m-73m 360° 34t

Height (m)	46.0	49.0	52.0	55.0	58.0	61.0	64.0	67.0	70.0	73.0	Height (m)
5											5
5.5											5.5
6											6
7											7
8											8
9	35.7										9
10	34.5	32.7	30.2	27.9							10
12	28	27.3	26.6	26	25.4	24	22.3	20.7			12
14	23.4	22.8	22.3	21.8	21.2	20.6	20.2	19.6	19		14
16	20	19.5	19	18.6	18.1	17.6	17.2	16.7	16.2	15.7	16
18	17.3	16.9	16.5	16.1	15.7	15.2	14.9	14.4	14	13.5	18
20	15.3	14.8	14.5	14.1	13.7	13.3	13	12.6	12.2	11.8	20
22	13.4	13.2	12.8	12.5	12.2	11.8	11.5	11.1	10.7	10.3	22
24	11.9	11.7	11.5	11.2	10.9	10.5	10.2	9.9	9.5	9.1	24
26	10.6	10.4	10.2	10.1	9.8	9.4	9.2	8.8	8.5	8.1	26
28	9.4	9.3	9.1	9	8.8	8.5	8.2	7.9	7.6	7.3	28
30	8.5	8.3	8.2	8.1	7.9	7.7	7.4	7.1	6.8	6.5	30
32	7.7	7.5	7.4	7.3	7.1	6.9	6.8	6.4	6.1	5.8	32
34	7	6.8	6.6	6.6	6.4	6.2	6.1	5.8	5.6	5.2	34
36	6.4	6.2	6	5.9	5.8	5.6	5.5	5.3	5	4.7	36
38	5.8	5.6	5.5	5.4	5.2	5	5	4.8	4.6	4.3	38
40	5	5	5	4.9	4.7	4.5	4.5	4.3	4.1	3.8	40
42		4.7	4.5	4.4	4.3	4.1	4	3.8	3.7	3.5	42
44			4.3	4.1	4	3.9	3.7	3.6	3.4	3.1	44
46				3.8	3.7	3.5	3.3	3.2	3.1	2.9	46
48					3.6	3.3	3	2.9	2.7	2.4	48
50						3.1	2.9	2.7	2.6	2.3	50
52							2.6	2.4	2.3	2.1	52
54								2.4	2.3	2.1	54
56									2.1	1.9	56
58										1.7	58
60											60
62											62
64											64

标准主臂工况作业范围

Working Range (Standard Boom)





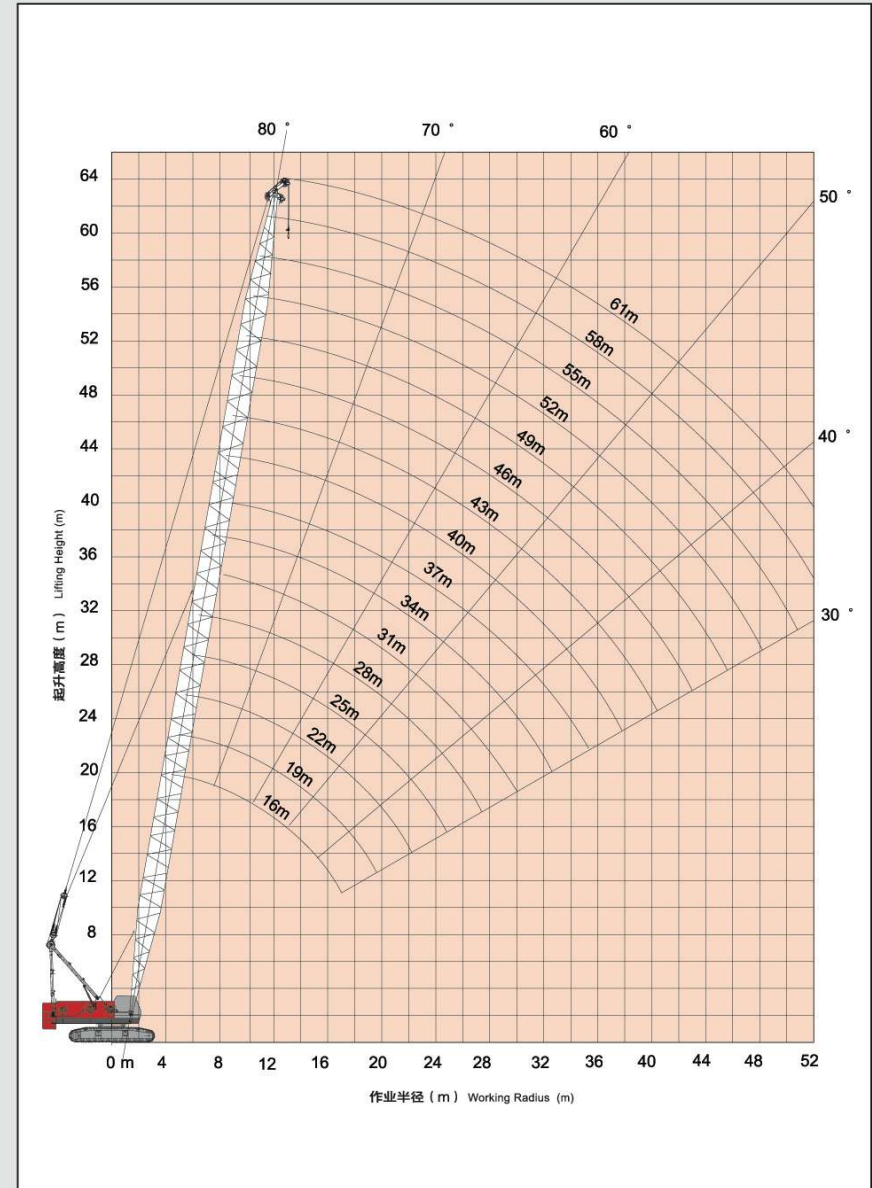
加长主臂工况载荷表

Load Chart (Runner)

16m-61m		360°																34t								
m		16	19	22	25	28	31	34	37	40	43	46	49	52	55	58	61	m								
5	5.2m 9.0t																	5								
5.3	9	5.8m 9.0t																5.3								
6	9	9	6.3m 9.0t	6.7m 9.0t														6								
7	9	9	9	9	7.3m 9.0t	7.9m 9.0t												7								
8	9	9	9	9	9	9	8.4m 9.0t	8.9m 9.0t										8								
9	9	9	9	9	9	9	9	9	9.7m 9.0t	9.9m 9.0t								9								
10	9	9	9	9	9	9	9	9	9	9	10.4m 9.0t	11.0m 9.0t	11.7m 9.0t					10								
12	9	9	9	9	9	9	9	9	9	9	9	9	9	12.2m 9.0t	12.7m 9.0t	13.0m 9.0t		12								
14	9	9	9	9	9	9	9	9	9	9	9	9	9	9	9	9	9	14								
16	9	9	9	9	9	9	9	9	9	9	9	9	9	9	9	9	9	16								
18	16.8m 9.0t	9	9	9	9	9	9	9	9	9	9	9	9	9	9	9	9	18								
20	19.4m 9.0t	9	9	9	9	9	9	9	9	9	9	9	9	9	9	9	9	20								
22			9	9	9	9	9	9	9	9	9	9	9	9	9	9	9	22								
24				9	9	9	9	9	9	9	9	9	9	9	9	9	9	24								
26					24.6m 9.0t	9	9	9	9	9	9	9	9	9	9	9	9	26								
28						27.2m 8.7t	26.8m 9.0t	26.7m 9.0t	26.3m 9.0t	26.2m 9.0t	8	7.9	7.7	7.6	7.5	7.5	7.4	28								
30							29.8m 7.7t	7.6	7.3	7.2	7.2	7	6.9	6.8	6.6	6.6	6.5	30								
32								6.7	6.6	6.5	6.4	6.3	6.2	6.1	5.9	5.9	5.8	32								
34									32.4m 6.6t	6	5.9	5.8	5.7	5.5	5.5	5.3	5.3	34								
36										35.0m 5.7t	5.4	5.3	5.2	5	4.9	4.7	4.7	36								
38											37.6m 5.0t	4.8	4.7	4.5	4.4	4.2	4.2	38								
40												4.3	4.2	4.1	4	3.8	3.8	40								
42													40.2m 4.2t	3.8	3.7	3.6	3.4	3.3	42							
44														42.8m 3.7t	3.4	3.2	3	2.9	44							
46															45.6m 3.2t	2.9	2.6	2.5	2.4	46						
48																	2.4	2.3	2.2	2.1	48					
50																			2	1.9	1.8	50				
52																					50.6m 1.8t	1.6	1.5	52		

加长主臂工况作业范围

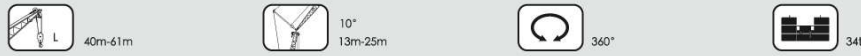
Working Range (Runner)



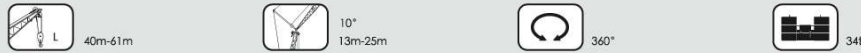


固定副臂工况载荷表

Load Chart (Fixed jib)



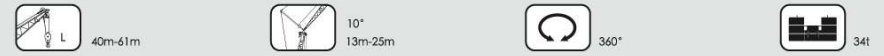
m	40			43			46			49			m
	13	19	25	13	19	25	13	19	25	13	19	25	
14	13.2			13.2						13.2			14
16	13	9.2		13			13.1			13.2			16
18	12.7	9	6.3	12.9	9.1		12.9	9.1		13	9.2		18
20	12.4	8.6	6.2	12.5	8.8	6.2	12.6	8.9	6.3			6.3	20
22	12.2	8.6	6	12	8.6	6	11.3	8.7	6.1	11.4	8.8	6.2	22
24	11.1	8.4	5.8	10.9	8.5	5.9	10.1	8.5	5.9	10.3	8.6	6.1	24
26	10.1	8.2	5.7	9.9	8.3	5.7	9.6	8.4	5.8	9.3	8.4	5.9	26
28	9.3	8	5.5	9.1	8.1	5.6	8.8	8.2	5.7	8.5	8.3	5.8	28
30	8.5	7.8	5.4	8.3	7.9	5.4	8.1	8	5.5	7.8	7.9	5.6	30
32	7.7	7.7	5.2	7.6	7.7	5.3	7.5	7.5	5.4	7.2	7.2	5.5	32
34	7	7.3	5.1	6.9	7.1	5.2	6.8	6.9	5.3	6.6	6.7	5.4	34
36	6.5	6.6	5	6.3	6.6	5.1	6.3	6.4	5.1	6	6.2	5.3	36
38	5.9	6.1	4.9	5.9	6	4.9	5.7	6	5	5.5	5.8	5.2	38
40	5.4	5.7	4.7	5.4	5.6	4.8	5.3	5.5	4.9	5	5.3	5.1	40
42	5.1	5.3	4.6	4.8	5.2	4.7	4.9	5.1	4.8	4.7	4.9	4.8	42
44	4.7	4.9	4.5	4.6	4.7	4.6	4.4	4.6	4.7	4.2	4.5	4.5	44
46	4.4	4.5	4.4	4.2	4.4	4.4	4.1	4.2	4.5	4	4.2	4.2	46
48	4	4.2	4.3	4	4.1	4.2	3.8	3.9	4.1	3.6	3.9	3.9	48
50	3.8	3.9	4.1	3.7	3.9	4	3.5	3.6	3.9	3.4	3.6	3.8	50
52		3.7	3.8	3.4	3.6	3.6	3.3	3.4	3.6	3.1	3.3	3.3	52
54			3.4		3.4	3.4	3	3.2	3.3	2.9	3.1	3.1	54
56			3.3		3.1	3.2	3	3	3.1	2.6	2.8	2.8	56
58			3.1		2.9	3		2.8	2.9	2.4	2.6	2.6	58
60			2.9			2.8		2.6	2.7	2.4	2.4	2.6	60
62						2.6		2.5	2.2		2.2		62
64						2.5		2.3		2.1	2.1		64
66								2.2			1.9		66
68											1.7		68



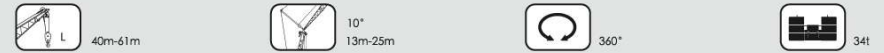
m	40			43			46			49			m
	13	19	25	13	19	25	13	19	25	13	19	25	
18	11.5			11.6						11.5			18
20	11.4			11.4			11.4			11.5			20
22	11.3	7.6		11.3	7.6					11.4			22
24	11.2	7.5		11.2	7.5		11.1	7.6		10.8	7.6		24
26	10.5	7.4	4.9	10.3	7.4	4.9	10	7.5		9.8	7.5		26
28	9.6	7.3	4.8	9.4	7.3	4.8	9.2	7.4	4.8	8.9	7.4	4.9	28
30	8.7	7.2	4.7	8.7	7.2	4.7	8.4	7.3	4.8	8.2	7.3	4.8	30
32	7.9	7.1	4.6	7.9	7.1	4.6	7.8	7.2	4.7	7.5	7.2	4.7	32
34	7.3	7	4.5	7.2	7	4.6	7.1	7.1	4.6	6.9	7.1	4.6	34
36	6.7	6.9	4.4	6.6	6.9	4.5	6.5	6.8	4.5	6.3	6.6	4.6	36
38	6.1	6.4	4.4	6.1	6.4	4.4	5.9	6.3	4.4	5.8	6.1	4.5	38
40	5.6	5.9	4.3	5.6	5.9	4.3	5.5	5.8	4.4	5.3	5.6	4.4	40
42		5.5	4.2	5.1	5.4	4.3	5	5.3	4.3	4.9	5.2	4.4	42
44		5.1	4.2		5	4.2	4.6	4.9	4.3	4.5	4.8	4.3	44
46		4.7	4.1		4.7	4.2		4.5	4.2	4.1	4.4	4.2	46
48			4.1		4.3	4.1		4.2	4.4	3.8	4.1	4.2	48
50					4	4.1		3.9	4.1		3.8	4	50
52					4			3.9	3.8		3.5	3.7	52
54						3.6			3.5		3.4	3.4	54
56								3.3			3.2	3.2	56
58									3.3			2.9	58
60											2.9		60
62													62
64													64
66													66

固定副臂工况载荷表

Load Chart (Fixed jib)



m	52			55			58			61			m
	13	19	25	13	19	25	13	19	25	13	19	25	
14													14
16	13.3			13.3									16
18	13	9.2		13			13.2				12.8		18
20	12.4	9	6.3	12.1	9.1		11.7	9.1			11.4	9.2	20
22	11.1	8.9	6.2	10.8	8.9	6.2	10.5	9	6.3	10.1	9	6.3	22
24	10	8.7	6.1	9.7	8.7	6.1	9.4	8.8	6.1	9.1	8.9	6.2	24
26	9.1	8.5	5.9	8.8	8.6	6	8.5	8.6	6	8.2	8.3	6.1	26
28	8.3	8.3	5.8	8	8.1	5.8	7.8	7.8	5.9	7.5	7.5	5.9	28
30	7.6	7.6	5.6	7.3	7.4	5.7	7.1	7.1	5.8	6.8	6.9	5.8	30
32	7	7	5.5	6.7	6.8	5.6	6.5	6.6	5.6	6.2	6.3	5.7	32
34	6.4	6.5	5.4	6.2	6.3	5.5	6	6	5.5	5.7	5.8	5.6	34
36	5.9	6	5.6	5.7	5.8	5.3	5.5	5.6	5.4	5.2	5.3	5.3	36
38	5.4	5.6	5.2	5.3	5.4	5.2	5.1	5.2	5.1	4.8	4.9	4.9	38
40	5	5.2	5.1	4.9	5	5	4.7	4.8	4.8	4.3	4.5	4.5	40
42	4.6	4.8	4.7	4.5	4.6	4.6	4.3	4.4	4.4	4	4.2	4.2	42
44	4.2	4.4	4.5	4.1	4.3	4.3	4	4.1	4.1	3.8	3.9	3.9	44
46	3.8	4.1	4.2	3.8	4	4	3.6	3.8	3.8	3.5	3.6	3.6	46
48	3.5	3.7	3.9	3.4	3.7	3.8	3.3	3.5	3.6	3.1	3.3	3.4	48
50	3.2	3.5	3.6	3.2	3.4	3.5	3	3.2	3.3	2.9	3.1	3.1	50
52	3	3.2	3.3	2.9	3.1	3.2	2.8	3	3.1	2.6	2.8	2.9	52
54	2.7	2.9	3.1	2.6	2.8	3	2.5	2.7	2.9	2.3	2.6	2.7	54
56	2.5	2.7	2.8	2.4	2.6	2.8	2.3	2.5	2.6	2.1	2.3	2.5	56
58	2.3	2.5	2.6	2.2	2.4	2.5	2.1	2.3	2.4	1.9	2.1	2.3	58
60	2.1	2.3	2.4	1.8	2.2	2.3	1.9	2.1	2.2	1.7	1.9	2.1	60
62		2.1	2.2	1.7	1.9	2	1.5	1.7	1.9	1.5	1.7	1.9	62
64		1.9	2.1	1.8	2	2	1.5	1.7	1.8	1.4	1.6	1.7	64
66		1.8	1.9	1.7	1.8	1.4	1.5	1.7	1.2	1.4	1.5	1.6	66
68			1.7	1.5	1.7		1.4	1.5	1	1.2	1.4	1.5	68



m	52			55			58			61			m
	13	19	25	13	19	25	13	19	25	13	19	25	
18													18
20	11.5			11.6									20
22	11.4			11.4			11.1				10.8		22
24	10.5	7.6		10.3	7.6						9.7		24
26	9.5	7.5		9.3	7.5		9	7.6			8.8	7.5	26
28	8.7	7.4	4.9	8.5	7.5	4.9	8.2	7.5			7.9	7.5	28
30	7.3	7.2	4.7	7.1	7.3	4.8	6.9	7			6.6	6.7	30
32	6.7	6.9	4.7	6.5	6.7	4.7	6.3	6.5	4.7		6.1	6.3	32
34	6.2	6.4	4.6	6	6.2	4.6	5.8	6	4.6		5.6	5.8	34
36	5.7	5.9	4.5	5.6	5.8	4.5	5.4	5.6	4.6		5.1	5.4	36
40	5.2	5.5	4.4	5.1	5.4	4.5	4.9	5.2	4.5		4.7	4.9	40
42	4.8	5.1	4.4	4.7	5	4.4	4.6	4.8	4.5		4.4	4.6	42
44	4.4	4.7	4.3	4.3	4.6	4.4	4.2	4.4	4.4		4	4.2	44
46	4	4.3	4.3	3.9	4.2	4.3	3.8	4.1	4.3		3.7	3.9	46
48	3.7	4	4.2	3.6	3.9	4.1	3.5	3.8	4		3.3	3.6	48
50	3.4	3.7	3.9	3.3	3.6	3.8	3.2	3.5	3.7		3	3.4	50
54		3.1	3.3	3.3	3.6	3.8	2.6	2.9	3.2		2.5	2.8	54
56			3.1		2.8	3		2.7	2.9		2.2	2.5	56
58			2.8		2.8	2.8		2.4	2.7		2.3	2.5	58
60			2.6		2.6	2.6		2.4	2.4		2.1	2.3	60
62					2.3			2.2			2.2		62
64								2			2		64
66												1.7	66



载荷表说明

Load Chart(Fixed jib)

说明

1. 本起重机符合 GB3811 标准,同时又满足 ISO4302,ISO4305 标准。
2. 载荷表所表示的额定总载荷值为水平坚硬地面上,理想作业条件的最大允许值。
3. 载荷表所示的值以吨为单位,额定总重量是在倾翻载荷的 78% 以内,及移动式起重机结构标准所确定的前方稳定度在 1.15 以内。
4. 载荷表所示的值基于平衡负载而计算,不包括如突然停止的冲击负载,地表状况,风力负荷及操作速度等影响。如在此条件下,驾驶员必须进行减载作业。同时,载荷表中的值还要扣除如吊钩,吊具等的自重。
5. 安装副臂的主起重臂长度为 40m~61m。
6. 安装副臂时,主起重臂禁止安装 100t 钩。
7. 安装副臂或加长臂时,主起重臂实际起重量为主起重臂额定载荷扣除下表所列的重量及主钩加副钩重量的值。

Notes

1. Ratings according to GB3811, ISO4302 and ISO4305.
2. The rated load in the table is the maximum allowed value when the crane works on the level and firm ground and under the ideal conditions.
3. The unit in the table is ton and the rated load capacity is 75% of tipping load. The front stability is within 1.15 as specified in the standard of the structure of mobile crane.
4. The values in the table are calculated on the stable load, not including impacting load, the hard condition of ground and operating speed. So the driver should reduce the corresponding load from the capacity ratings, the weight of hook and slings should also be deducted from the capacity ratings.
5. When mounted with jib, the length of main boom is 40m~61m.
6. When mounted with jib, main boom is forbidden to attach the 100t hook.
7. When mounted with jib or runner, the actual lifting capacity of main boom is the rated load capacity deducting the weights of main and auxiliary hooks, fixed jib or runner.

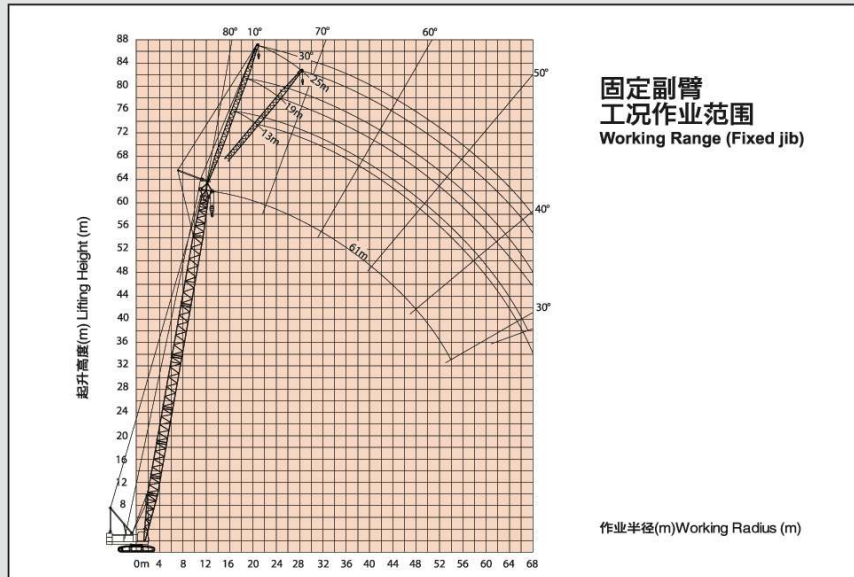
固定副臂和加长臂

Fixed jib and Runner

13m副臂 jib	1.5t	19m副臂 jib	1.7t
25m副臂 jib	1.9t	加长臂 Runner	0.4t

8. 安装加长臂的主臂长度为 16m~61m。
9. 平衡重质量为 34t。
10. 侧面时的稳定值最小。

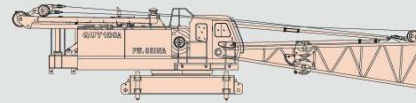
8. When mounted with runner, the length of main boom is 16m~61m.
9. The weight of counterweight is 34t.
10. The stability is weak at side.



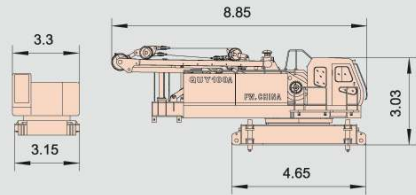
主要零部件运输尺寸

Dimensions for Transportation

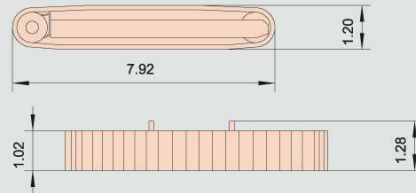
尺寸单位: m Unit: m



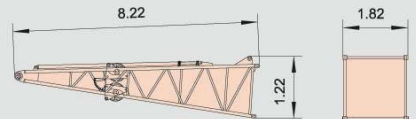
本体	x1	Carbody	x1
重量	33500Kg	Weight	33500Kg



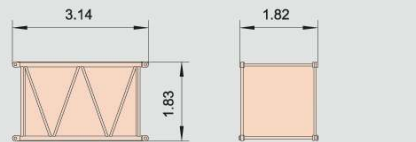
本体(拆基础臂架)	x1	Carbody(Not including boom foot)	x1
长	8.85m	Length	8.85m
宽	3.15m	Width	3.15m
高	3.03m	Height	3.03m
重量	31000Kg	Weight	31000Kg



履带总成	x2	Crawler assy	x2
长	7.92m	Length	7.92m
宽	1.28m	Width	1.28m
高	1.20m	Height	1.20m
重量	16000Kg	Weight	16000Kg



基础臂节	x1	Boom foot	x1
长	8.22m	Length	8.22m
宽	1.82m	Width	1.82m
高	1.22m	Height	1.22m
重量	2565Kg	Weight	2565Kg



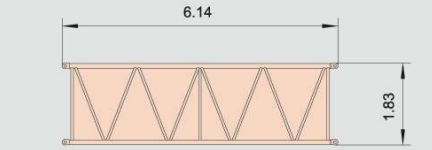
3m中间臂节	x1	3m insert section	x1
长	3.14m	Length	3.14m
宽	1.82m	Width	1.82m
高	1.83m	Height	1.83m
重量	520Kg	Weight	520Kg



主要零部件运输尺寸

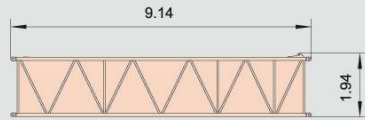
Dimensions for Transportation

尺寸单位: m Unit: m



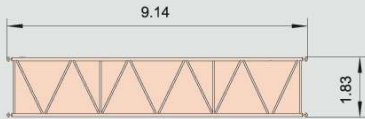
6m中间臂节	x2
长	6.14m
宽	1.82m
高	1.83m
重量	930Kg

6m insert section	x2
Length	6.14m
Width	1.82m
Height	1.83m
Weight	930Kg



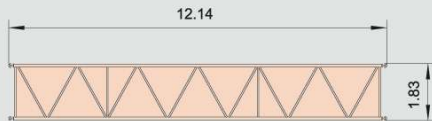
9m中间臂节(A)	x1
长	9.14m
宽	1.82m
高	1.94m
重量	1330Kg

9m insert section(A)	x1
Length	9.14m
Width	1.82m
Height	1.94m
Weight	1330Kg



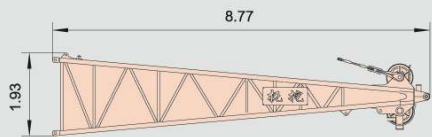
9m中间臂节(B)	x1
长	9.14m
宽	1.82m
高	1.83m
重量	920Kg

9m insert section(B)	x1
Length	9.14m
Width	1.82m
Height	1.83m
Weight	920Kg



12m中间臂节	x2
长	12.14m
宽	1.82m
高	1.83m
重量	1140Kg

12m insert section	x2
Length	12.14m
Width	1.82m
Height	1.83m
Weight	1140Kg



顶部臂节	x1
长	8.77m
宽	1.82m
高	1.93m
重量	2090Kg

Boom top	x1
Length	8.77m
Width	1.82m
Height	1.93m
Weight	2090Kg



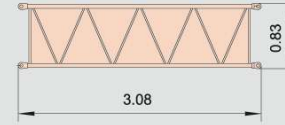
副臂基础臂节	x1
长	5.10m
宽	0.99m
高	0.83m
重量	220Kg

Fixed jib foot	x1
Length	5.10m
Width	0.99m
Height	0.83m
Weight	220Kg

主要零部件运输尺寸

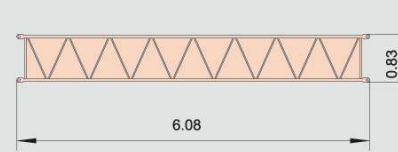
Dimensions for Transportation

尺寸单位: m Unit: m



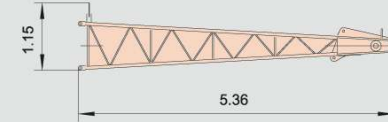
3m中间臂节	x1
长	3.08m
宽	1.01m
高	0.83m
重量	110Kg

3m jib insert section	x1
Length	3.08m
Width	1.01m
Height	0.83m
Weight	110Kg



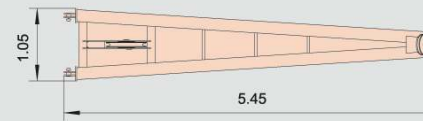
6m中间臂节	x2
长	6.08m
宽	1.01m
高	0.83m
重量	190Kg

6m jib insert section	x2
Length	6.08m
Width	1.01m
Height	0.83m
Weight	190Kg



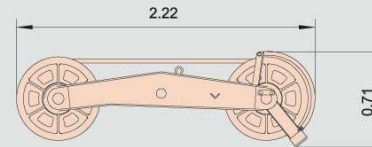
副臂顶部臂节	x1
长	5.36m
宽	1.01m
高	1.15m
重量	230Kg

Fixed jib top	x1
Length	5.36m
Width	1.01m
Height	1.15m
Weight	230Kg



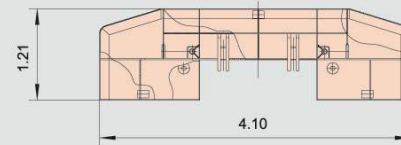
副臂撑架	x1
长	5.45m
宽	0.52m
高	1.05m
重量	440Kg

Jib strut	x1
Length	5.45m
Width	0.52m
Height	1.05m
Weight	440Kg



加长臂	x1
长	2.22m
宽	0.44m
高	0.71m
重量	350Kg

Runner	x1
Length	2.22m
Width	0.44m
Height	0.71m
Weight	350Kg



配重A	x1
长	4.10m
宽	1.21m
高	0.80m
重量	12900Kg

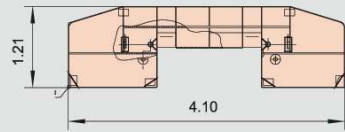
Counterweight A	x1
Length	4.10m
Width	1.21m
Height	0.80m
Weight	12900Kg



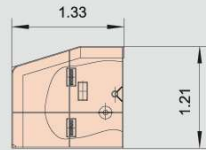
主要零部件运输尺寸

Dimensions for Transportation

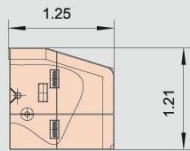
尺寸单位: m Unit: m



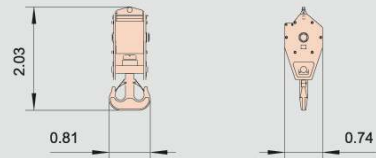
配重B	x1	Counterweight B	x1
长	4.10m	Length	4.10m
宽	1.21m	Width	1.21m
高	0.84m	Height	0.84m
重量	13200Kg	Weight	13200Kg



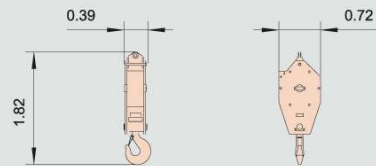
配重C	x1	Counterweight C	x1
长	1.33m	Length	1.33m
宽	1.21m	Width	1.21m
高	0.85m	Height	0.85m
重量	3988Kg	Weight	3988Kg



配重D	x1	CounterweightD	x1
长	1.25m	Length	1.25m
宽	1.21m	Width	1.21m
高	0.85m	Height	0.85m
重量	3743Kg	Weight	3743Kg



100吨吊钩	x1	100t Hook	x1
长	2.03m	Length	2.03m
宽	0.81m	Width	0.81m
高	0.74m	Height	0.74m
重量	1353Kg	Weight	1353Kg



50吨吊钩	x1	50t Hook	x1
长	1.82m	Length	1.82m
宽	0.72m	Width	0.72m
高	0.39m	Height	0.39m
重量	690Kg	Weight	690Kg



9吨吊钩	x1	9t Hook	x1
长	0.95m	Length	0.95m
宽	0.36m	Width	0.36m
高	0.36m	Height	0.36m
重量	250Kg	Weight	250Kg

