

Lifting your dreams

GR-1200XL

120 TON CAPACITY (110.0 metric tons)

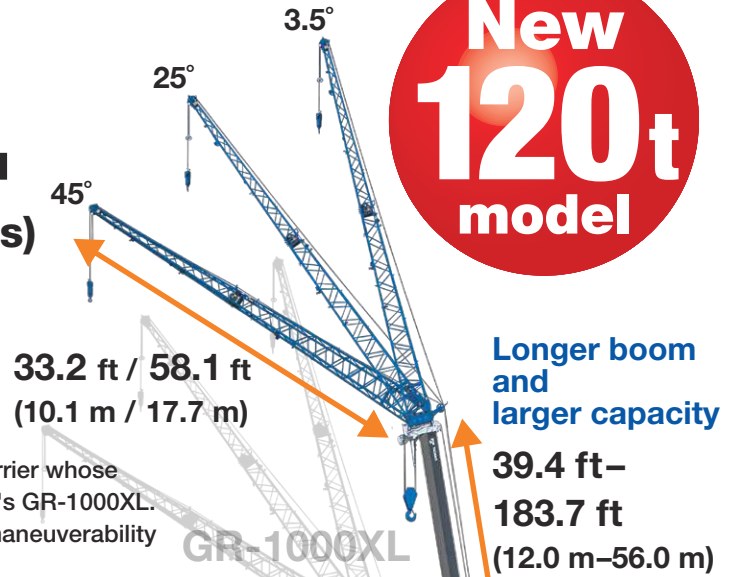
Longer Rounded Boom and Compact Carrier

Compact carrier

The GR-1200XL has a compact carrier whose size is almost the same as Tadano's GR-1000XL. This compactness provides high maneuverability and easy transportability.



Overall length:
approx. 47' 4-7/8" (14,450 mm)
Overall width:
approx. 10' 10-1/2" (3,315 mm)
Overall height:
approx. 12' 5-3/8" (3,795 mm)



**New
120t
model**

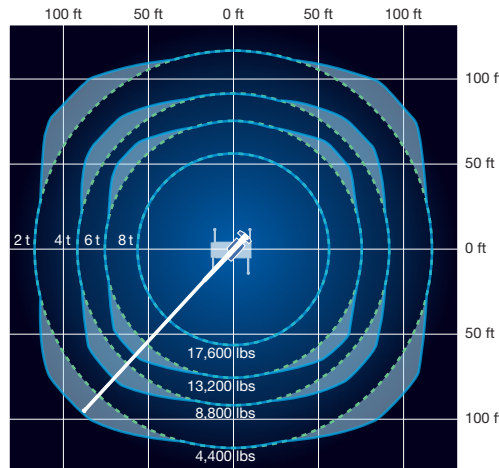
Longer boom and larger capacity
39.4 ft - 183.7 ft
(12.0 m - 56.0 m)

Carrier length: **28' 1-7/8"**
(8,580 mm)



Smart Chart system

Tadano's newly developed Smart Chart taps the potential of a crane by expanding the conventional circular working area into a square one, improving work safety and efficiency.



Max. lifting height:
184.0 ft (56.1 m)
[Boom only]

241.4 ft (73.6 m)
[Boom + Jib]

Max. working radius:
150.0 ft (45.7 m)
[Boom only]

159.0 ft (48.5 m)
[Boom + Jib]

-1.5° - 81.0°



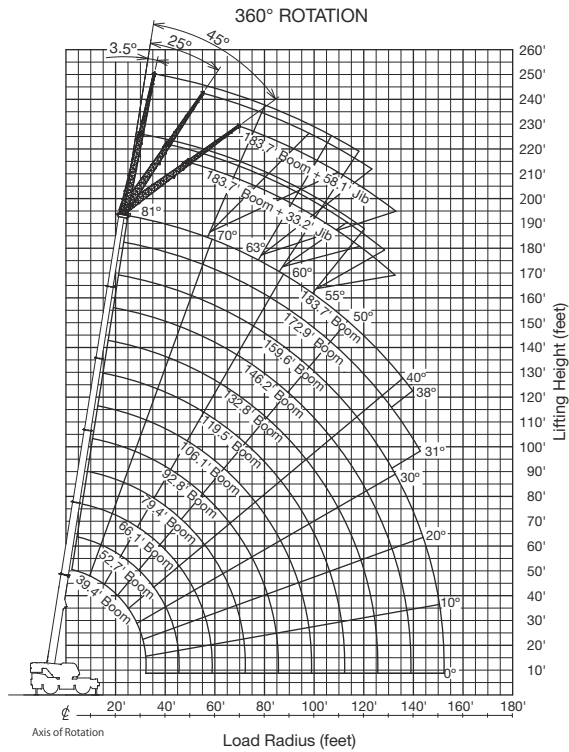
MODEL: GR-1200XL

SPECIFICATIONS

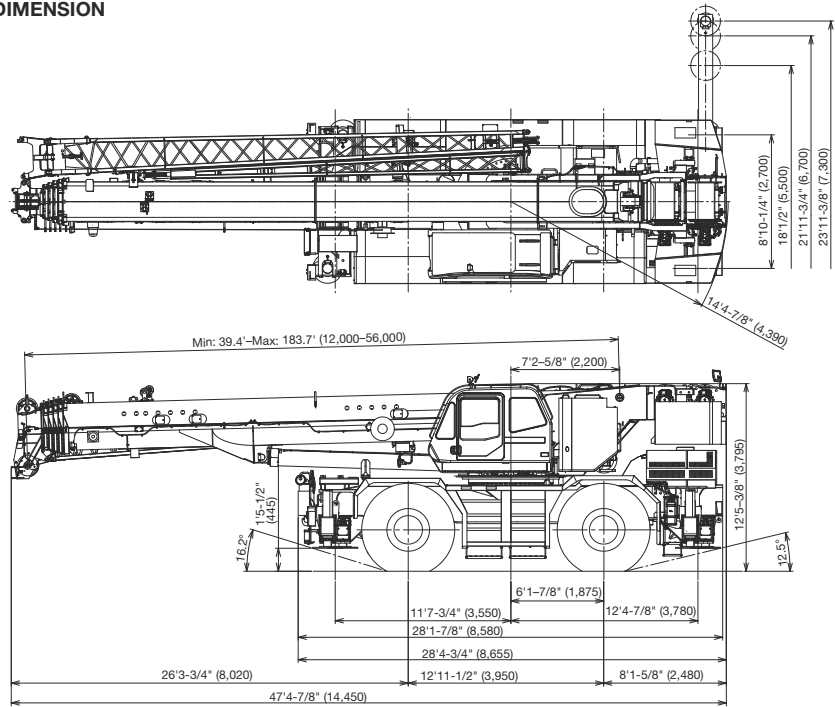
MAXIMUM CAPACITY	242,500 lbs at 8 ft
PERFORMANCE	
Max. traveling speed	12 mph (19 km/h)
Gradeability (tan θ)	84%, 57%*
* Machine should be operated within limit of engine crackcase design. (30": Cummins QSB6.7 EPA) Tier4 Final	
WEIGHT	
Gross vehicle mass	122,298 lbs (55,474 kg)
-1st axle	61,233 lbs (27,775 kg)
-2nd axle	61,065 lbs (27,699 kg)
MIN. TURNING RADIUS	
2-wheel steer:	39' 1" (11.9 m)
4-wheel steer:	22' 4" (6.8 m) (at center of extreme outer tire)
BOOM	
Fully retracted length	6-section extended by single telescoping cylinder. 39.4' (12.0 m)
Fully extended length	183.7' (56.0 m)
Extension speed	144.4' (44.0 m) in 340 s
Angle	-1.5°-81°
Elevation speed	20° to 60° in 40 s
JIB	
Offset	2 stage bi-fold lattice type;
Length	Single sheave at the head of both jib sections. 3.5°, 25° or 45° 33.2', 58.1' (10.1 m, 17.7 m)
MAIN WINCH	
Single line pull	Variable speed type with grooved drum driven by hydraulic axial piston motor. 21,800 lbs (9,900 kgf)
Single line speed	446 fpm (136 m/min.) (at the 4th layer)
Wire rope	3/4" (19 mm) x 771' (235 m) (Diameter x length)
AUXILIARY WINCH	
Single line pull	Variable speed type with grooved drum driven by hydraulic axial piston motor. 21,800 lbs (9,900 kgf)
Single line speed	384 fpm (117 m/min.) (at the 2nd layer)
Wire rope	3/4" (19 mm) x 518' (158 m) (Diameter x length)
SLEWING	
Slewing speed	1.5 min ⁻¹ {rpm}
Tail slewing radius	14'4"-7'8" (4,390 mm)
HYDRAULIC SYSTEM	
	Pumps... 2 variable piston pumps for crane functions. Tandem gear pump for steering, slewing and optional equipment. Control valves... Multiple valves actuated by pilot pressure with integral pressure relief valves. Reservoir... 202 gal. (763 lit.) capacity. External sight level gauge. Oil cooler... Air cooled fan type.

TADANO Load Moment Indicator (TADANO AML-C)	Following information is displayed: <ul style="list-style-type: none"> Control lever lockout function with audible and visual pre-warning Boom position indicator Outrigger state indicator Boom angle / boom length / jib offset angle / jib length / load radius / rated lifting capacities / actual loads read out Ratio of actual load moment to rated load moment indication Automatic speed reduction and slow stop function on boom elevation and slewing Working condition register switch Load radius / boom angle / tip height / slewing range preset function External warning lamp Tare function Fuel consumption monitor Main winch / auxiliary winch select Drum rotation indicator (audible and visible type) main and auxiliary winch
OUTRIGGERS	4 hydraulic, beam and jack outriggers. Vertical jack cylinders equipped with integral holding valve. Each outrigger beam and jack is controlled independently from cab.
Extension width	Max. ... 23' 11-3/8" (7,300 mm), Mid. ... 18' 1/2" & 21' 11-3/4" (5,500 mm & 6,700 mm), Min. ... 8' 10-1/4" (2,700 mm), Float size (Diameter)... 1' 11-5/8" (600 mm)
CARRIER	Rear engine, left-hand steering, driving axle 2-way selected type by manual switch. 4 x 2 front drive, 4 x 4 front and rear drive.
ENGINE	Model... Cummins QSB6.7 EPA)Tier4 Final Type... 4-cycle, turbo charged and after cooled, direct injection diesel. Piston displacement ... 409 cu. In. (6.7 liters) Bore x stroke... 4.212 in. x 4.882 in. (107 mm x 124 mm) Max. output... Gross 270 HP (201 kW) at 2,000 min ⁻¹ {rpm} Max. torque... 730 ft-lb (990 kgm) at 1,500 min ⁻¹ {rpm}
TRANSMISSION	Electronically controlled full automatic transmission.
STEERING	Hydraulic power steering controlled by steering wheel. 4 steering modes available: 2-wheel front, 2-wheel rear, 4-wheel coordinated and 4 wheel crab
SUSPENSION	Front: Rigid mounted to frame. Rear : Pivot mounted with hydraulic lockout device.
TIRES	29.5-25 34PR (OR)
FUEL TANK CAPACITY	79.2 gal. (300 lit.)

WORKING RANGE



DIMENSION



Note: Dimension is with boom angle at -1.5 degree.
() Reference dimensions in mm.

Note: Some specifications are subject to change.



TADANO AMERICA Corporation

4242 West Greens Road, Houston, TX 77066

Tel: 281-869-0030 Fax: 281-869-0040

www.tadanoamerica.com Email: sales@tadano-cranes.com

Parts Hotline: 713-865-1041 Service Hotline: 281-869-5925

