

# GR-800EX

**Crane capacity**  
80,000 kg at 3.0 m

**5-section long boom**  
12.0 m–47.0 m

**2-staged bi-fold jib**  
10.1 m/17.7 m

**Maximum lifting height**  
47.1 m (Boom)  
64.4 m (Jib)

**Maximum load radius**  
40.0 m (Boom)  
46.0 m (Jib)



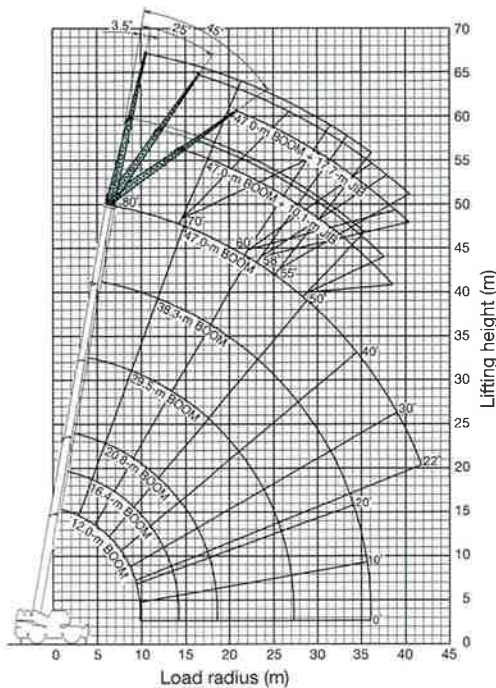
# MODEL: GR-800EX

## SPECIFICATIONS

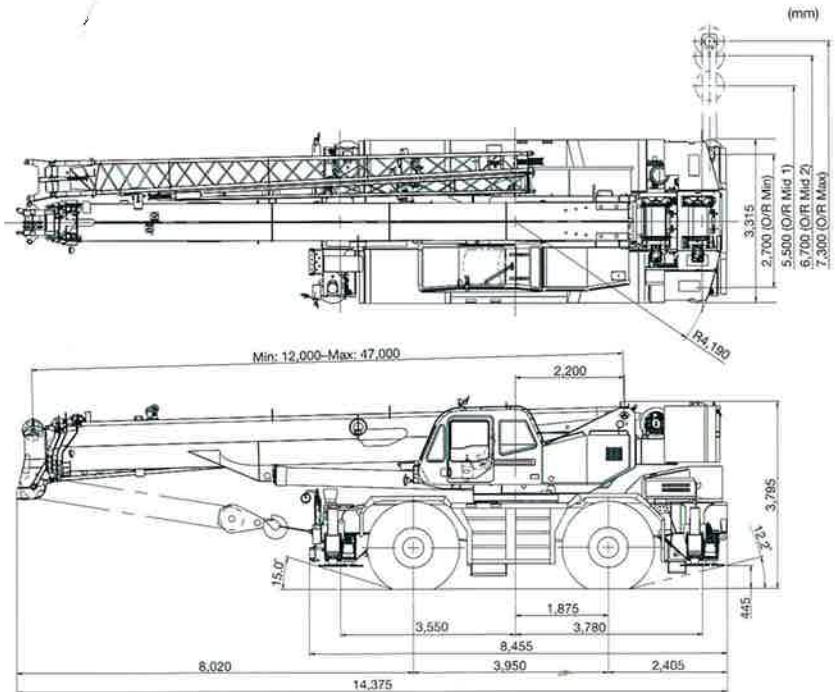
<b>MAXIMUM CAPACITY</b>	80,000 kg at 3.0 m
<b>PERFORMANCE</b>	
Max. Traveling speed	36 km/h
Gradeability (tan $\theta$ )	94% (at stall), 30%*
* Machine should be operated within limit of engine crackcase design. (17: Mitsubishi 6M60-TL)	
<b>WEIGHT</b>	
Gross vehicle mass	52,110 kg (incl. 80 ton hook block)
-front axle	25,675 kg
-rear axle	26,435 kg
<b>MIN. TURNING RADIUS</b>	11.9 m (2-wheel steering), 6.8 m (4-wheel steering) (at center of extreme outer tire)
<b>BOOM</b>	
Fully retracted length	12.0 m
Fully extended length	47.0 m
Extension speed	35.0 m in 160 s
Angle	-1.5°-80.5°
Elevation speed	20° to 60° in 46 s
<b>JIB</b>	
	2-staged bi-fold lattice type with triple offset (tilt type). Single sheave at jib head.
Offset	3.5°, 25°, 45°
Length	10.1 m and 17.7 m
<b>MAIN WINCH</b>	
	Variable speed type with grooved drum driven by hydraulic axial piston motor.
Single line pull	64.7 kN {6,600 kgf}
Single line speed	149 m/min. (at 4th layer)
Wire rope	19 mm x 253 mm (Diameter x length)
<b>AUXILIARY WINCH</b>	
	Variable speed type with grooved drum driven by hydraulic axial piston motor.
Single line pull	64.7 kN {6,600 kgf}
Single line speed	128 m/min. (at 2nd layer)
Wire rope	19 mm x 139 mm (Diameter x length)
<b>SLEWING</b>	
Slewing Speed	1.5 min <sup>-1</sup> {rpm}
Tail slewing radius	4,190 mm
<b>HYDRAULIC SYSTEM</b>	
	Pumps... 2 variable piston pumps for crane functions. Tandem gear pump for steering, slewing and optional equipment.
	Control valves... Multiple valves actuated by pilot pressure with integral pressure relief valves.
	Reservoir... 763 liters capacity. External sight level gauge.
	Oil cooler... Air cooled fan type.

<b>TADANO Automatic Moment Limiter (Model: AML-C)</b>	Following information is displayed: <ul style="list-style-type: none"> <li>Control lever lockout function with audible and visual pre-warning</li> <li>Number of parts of line</li> <li>Boom position indicator</li> <li>Outtrigger state indicator</li> <li>Slewing angle</li> <li>Boom angle / boom length / jib offset angle / jib length / load radius / rated lifting capacities / actual loads read out</li> <li>Potential lifting height</li> <li>Ratio of actual load moment to rated load moment indication</li> <li>Permissible load</li> <li>Automatic speed reduction and slow stop function for boom elevation and slewing</li> <li>Working condition register switch</li> <li>Load radius / boom angle / tip height / slewing range preset function</li> <li>External warning lamp</li> <li>Tare function</li> <li>Main hydraulic oil pressure</li> <li>Fuel consumption monitor</li> <li>Main winch / auxiliary winch select</li> <li>Drum rotation indicator (audible and visible type) main and auxiliary winch</li> <li>On-rubber indicator</li> </ul>
<b>OUTRIGGERS</b>	4 hydraulic, beam and jack outriggers. Vertical jack cylinders equipped with integral holding valve. Each outrigger beam and jack is controlled independently from cab.
Extension width	Max. ... 7,300 mm, Mid. ... 6,700 mm & 5,500 mm Min. ... 2,700 mm, Float size (Diameter) ... 600 mm
<b>CARRIER</b>	Rear engine, left-hand drive, driving axle 2-way selected type by manual switch. 4 x 2 front drive, 4 x 4 front and rear drive
<b>ENGINE</b>	Model..... Mitsubishi 6M60-TL Type..... 4-cycle, turbo charged and after cooled, 6-cylinder, direct injection diesel. Piston displacement...7.54 liters Bore x stroke... 118 mm x 115 mm Max. output... 200 kW at 2,600 min <sup>-1</sup> {rpm} Max. torque... 785 N·m at 1,400 min <sup>-1</sup> {rpm}
<b>TRANSMISSION</b>	Electronically controlled full automatic transmission.
<b>STEERING</b>	Hydraulic power steering. 4 steering modes available: 2-wheel front, 2-wheel rear, 4-wheel coordinated, 4-wheel crab
<b>SUSPENSION</b>	Front..... Rigid mounted to frame. Rear..... Pivot mounted with hydraulic lockout cylinders.
<b>TIRES</b>	29.5-25 34PR (OR), Single x 4
<b>FUEL TANK CAPACITY</b>	300 liters

## WORKING RANGE



## DIMENSIONS



Note: Some specifications are subject to change.



☎ Lifting your dreams

**TADANO LTD.** (International Sales Division)  
 4-12, Kamezawa 2-chome, Sumida-ku Tokyo 130-0014, Japan  
 Phone: +81-3-3621-7750 Fax: +81-3-3621-7785  
<http://www.tadano.com/> E-mail: info@tadano.com

