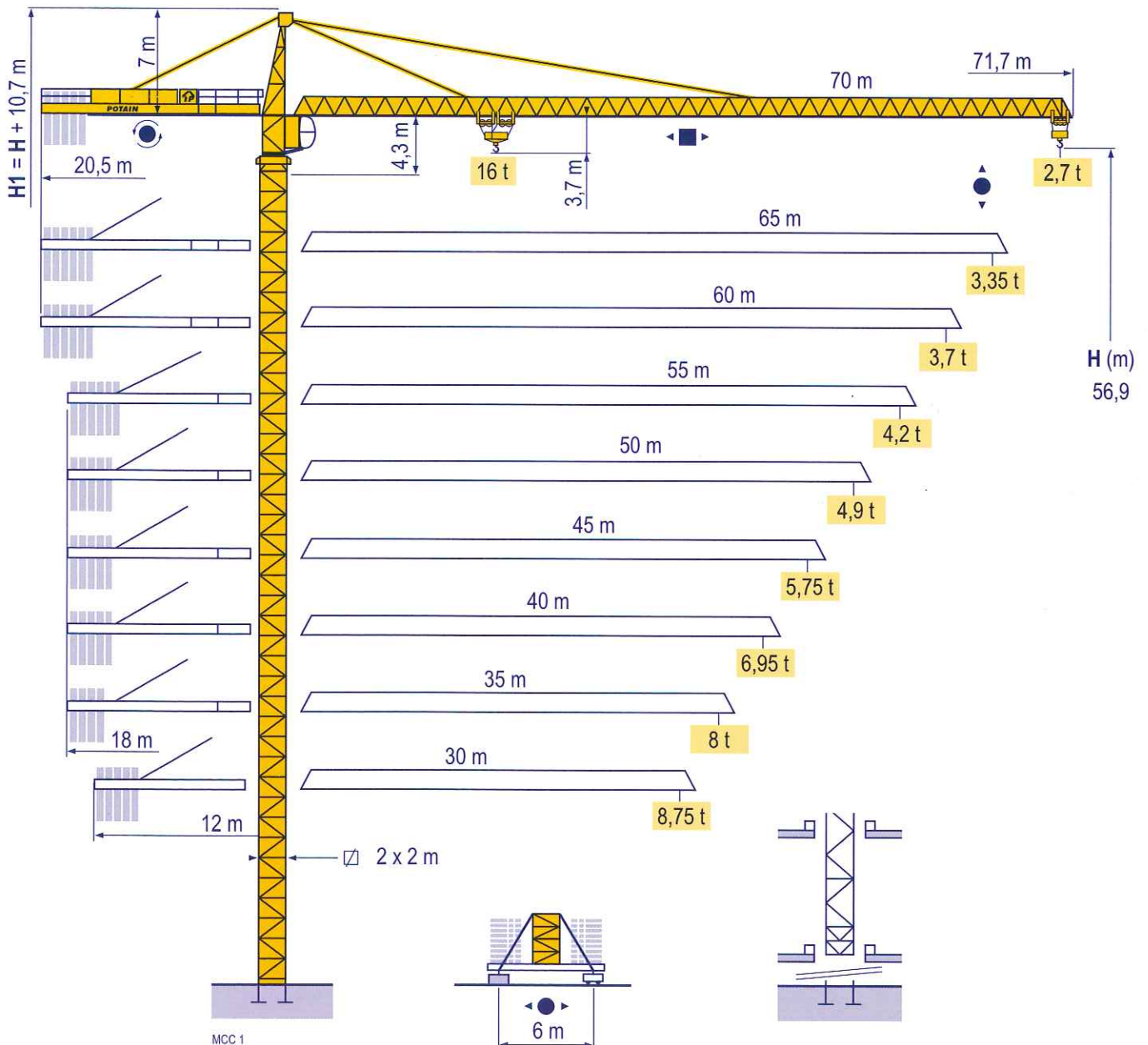


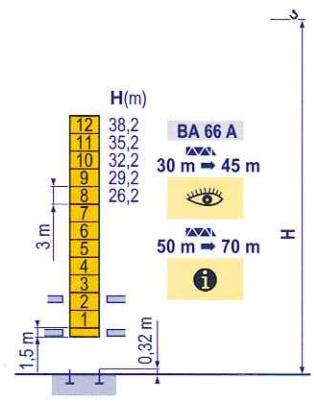
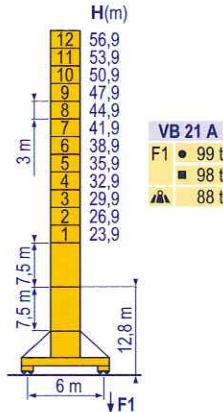
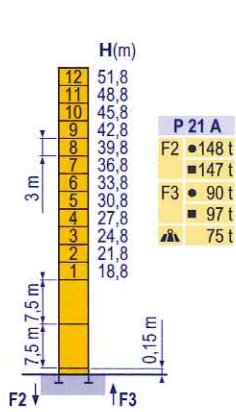
MC 310 K16



Masts / Reactions

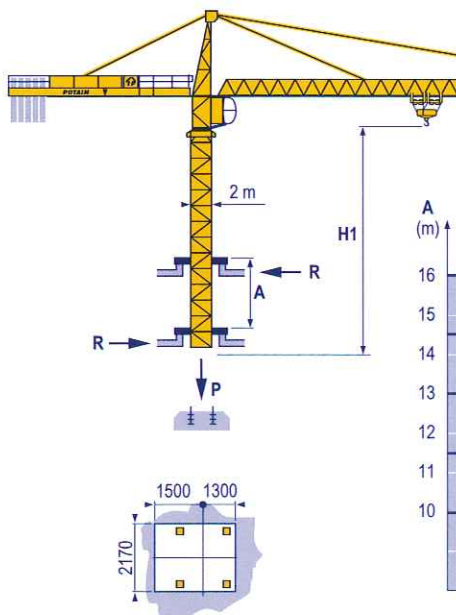
□ 2 m
 ▒ 30 m ⇒ 70 m

MCC 1



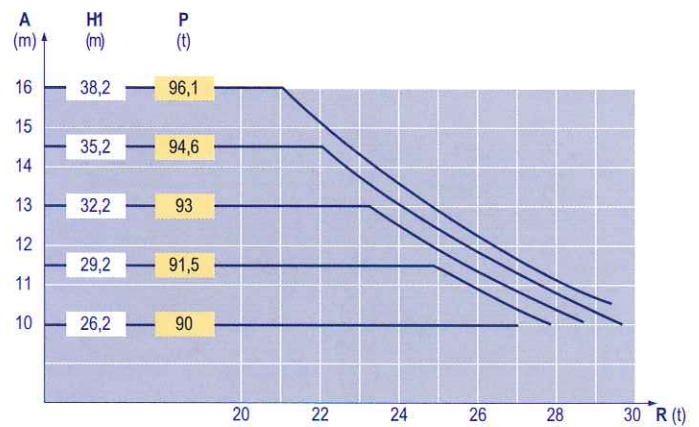
Climbing crane

MCC 1



BA 66 A

45 m



TOPKIT
 MC 310 K16

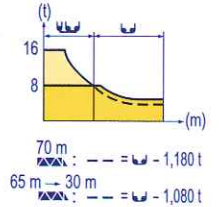
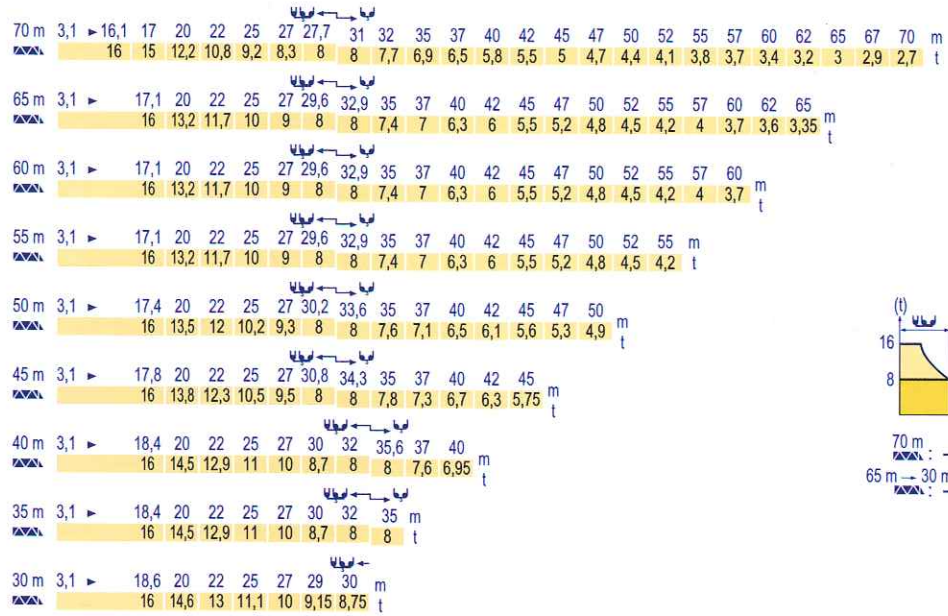


GB

- Reactions in service
- Reactions out of service
- ▲ Without load, ballast (or transport axles), with maximum jib and maximum height.
- i Consult us
- 👁 See climbing crane

Load diagrams

MCC 1



Counter-jib ballast

MCC 1

Crane Height (m)	4 600 - 4 200 - 2 300 kg			4 200 - 700 kg		
	Jib Length (m)	70 RCS 40	100 LVF 40	70 RCS 40	100 LVF 40	150 LCC 40
		(kg)		(kg)		
70 m	20,5 m	24 500	24 100	24 500	23 800	22 400
65 m	20,5 m	23 700	22 600	23 800	22 400	21 700
60 m	20,5 m	21 800	21 800	21 700	21 000	19 600
55 m	18 m	24 900	24 100	24 500	23 800	23 100
50 m	18 m	22 600	22 200	22 400	21 700	20 300
45 m	18 m	19 500	18 400	18 900	18 200	17 500
40 m	18 m	17 200	15 700	16 800	15 400	15 400
35 m	18 m	14 900	13 800	14 000	13 300	12 600
30 m	12 m	20 700	20 300	20 300	20 300	18 900

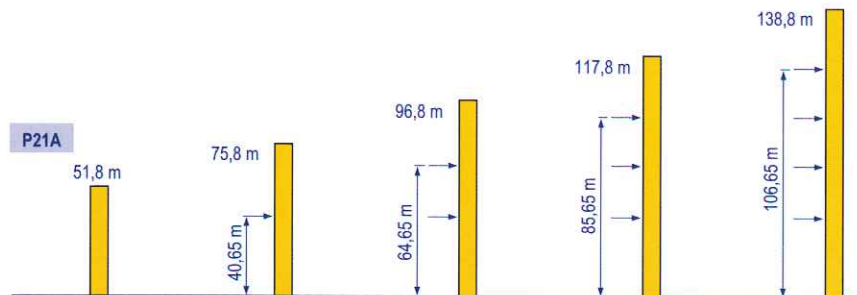
Base ballast

MCC 1

Crane Height (m)	VB 21 A	H (m)	56,9	53,9	50,9	47,9	44,9	41,9	38,9	35,9	32,9	29,9	26,9	23,9
2 m	VB 21 A	(t)	84	72	72	72	72	72	72	60	60	60	60	60

Anchorage

MCC 1



TOPKIT
 MC 310 K16





POTAIN

GB

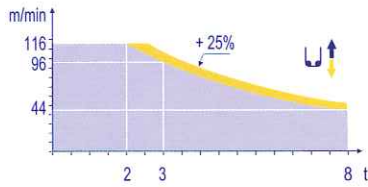
- A Distance between collars
- H1 Crane height
- P Crane weight (in service)
- R Horizontal reaction

Mechanisms



MCC 2

				U ↑		UU ↑		hp	kW	
▲	70 RCS 40	m/min	0 → 30	0 → 60	0 → 15	0 → 30	70	51	586 m	
		t	8	4	16	8				
	100 LVF 40 Optima	m/min	0 → 44 → 56 → 96 → 116		0 → 22 → 28 → 48 → 58		100	75	1009 m	
		t	8	6 3 2	16	12 6 4				
	150 LCC 40	m/min	68 → 82 → 102 → 136 → 162		34 → 41 → 51 → 68 → 81		150	110	596 m	
		t	8 6 4 2 1		16 12 8 4 2					
◀ ▶	6 DVF 6	m/min	0 → 42 (16 t) 0 → 84 (8 t) 0 → 100 (4 t)				5,5	4		
	RVF 162 Optima	rpm	0 → 0,7				2 x 7,5	2 x 5,5		
	VB 20A VB 21A	RT 544 A1 2V R ≥ 13 m	m/min				13,5 - 27	4 x 7	4 x 5,2	
		CEI 38 	IEC 38		kVA					
		400 V (+6% -10%) 50 Hz				70 RCS : 100 kVA 100 LVF : 125 kVA 150 LCC : 175 kVA				

100 LVF 40 Optima



GB

-  Hoisting
-  Travelling
-  Slewing
-  Travelling



This commercial document is not legally binding.
For any technical information, please refer to the corresponding instructions.



Americas

Tel : +1 888 479 7278
Tel : +1 717 593 2000

Europe - Middle East - Africa

Tel : +33 (0) 4 72 81 50 00
Tel : +44 (0) 191 522 2000

Asia - Pacific

Tel : +65 6264 1188
Fax : +65 6862 4142

www.manitowoccrane.com

Manitowoc Crane Group Asia Pte Ltd

Manitowoc Crane Group

4 Kwong Min Road

Singapore 628707

Tel: +65 6264 1188

Fax: +65 6862 4040

www.manitowoccrane.com

MC 310 K16

Réf. 2004 45 MCC 2

Copyright.Reproduction interdite © POTAIN 2004

Réalisation Sedoc