



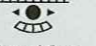



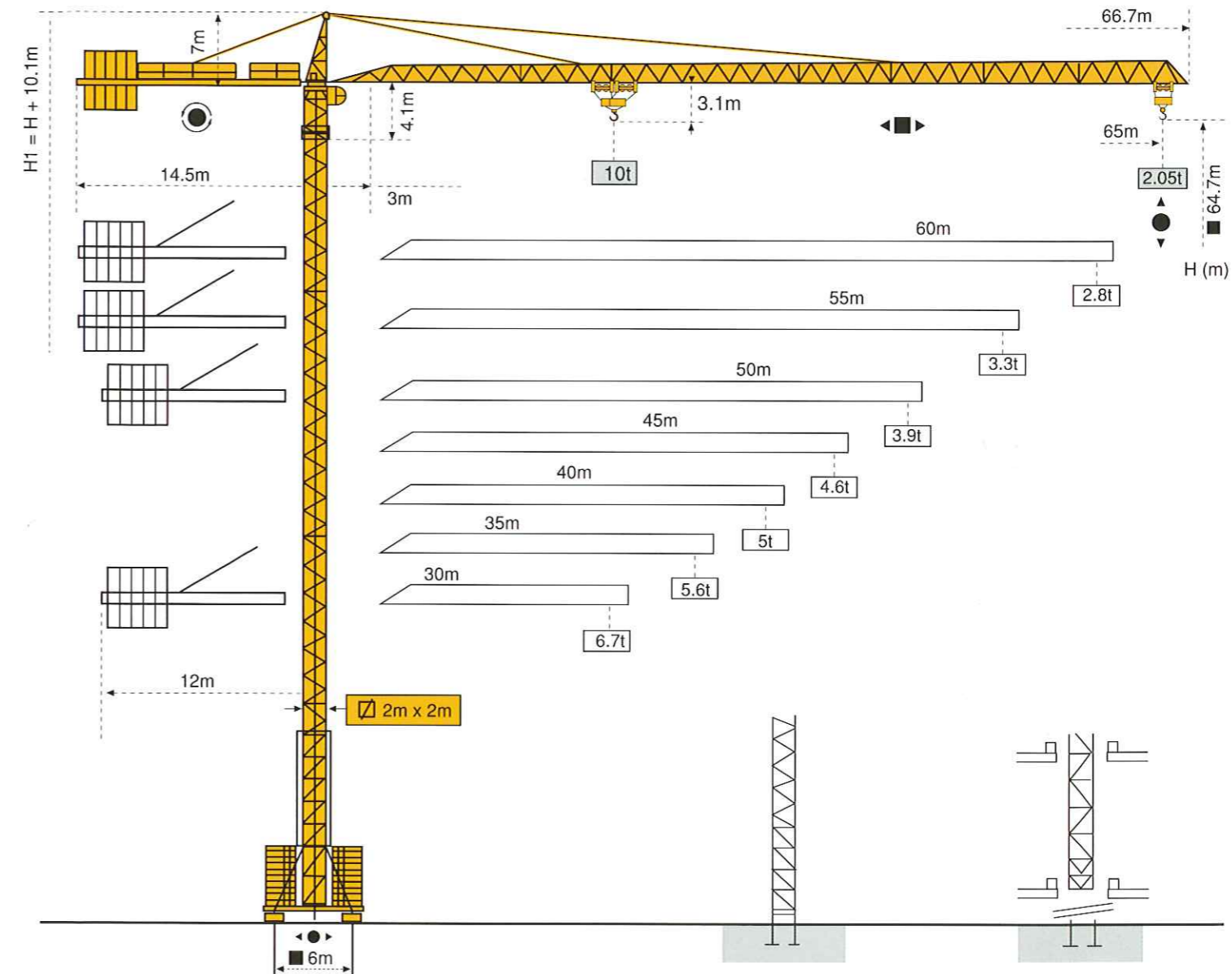
Mechanisms

		m/min	t	m/min	t	ch-Ps hp	kW	
Hoisting	 50 LVF 25	4	5	2	10	50	37	557m
		10	5	5	10			
		32.6	5	16.3	10			
		44	3.75	22	7.5			
		65	2.5	32.5	5			
		79	1.25	39.5	2.5			
		10 - 50 m/min (10t)	6	4.4				
100 m/min (5t)								
Trolleying	 6 D3 V4							
Slewing	 RCV 185			0 ⇒ 0.8 tr/min (rpm)		2 x 9	2 x 6.6	
Travelling	VB 20A  R ≥ 13m RT 544 A1 2V			13.5 - 27		4 x 7	4 x 5.2	
CEI 38 	IEC 38	kVA	Generator set					
400V (+6% - 10%) 50Hz		50 LVF : 75 kVA	*					

* Please consult us.

Subject to Modification. This commercial document is not legally binding. For any technical information, please refer to the corresponding instructions.

MC 235B



GROVE
POTAIN

Manitowoc Crane Group Asia Pte Ltd
Manitowoc Crane Group

26 Benoi Road
Singapore 629 898
Tel: 65-6861 7133
Fax (Admin/Sales) : 65-6862 4040
Fax (Service/Parts): 65-6862 4142
www.manitowoccrane.com

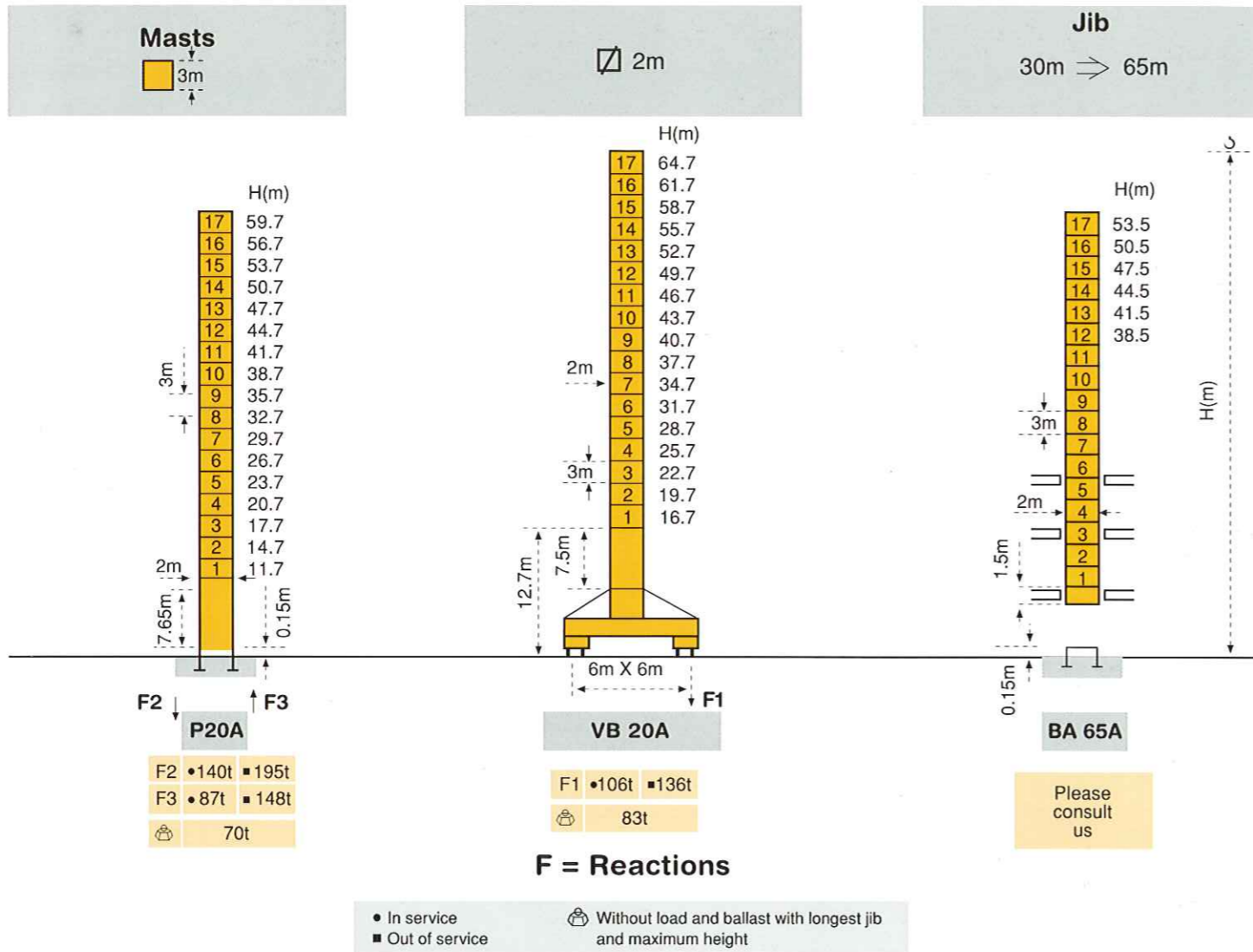
Copyright. © POTAIN 2004

MC 235B

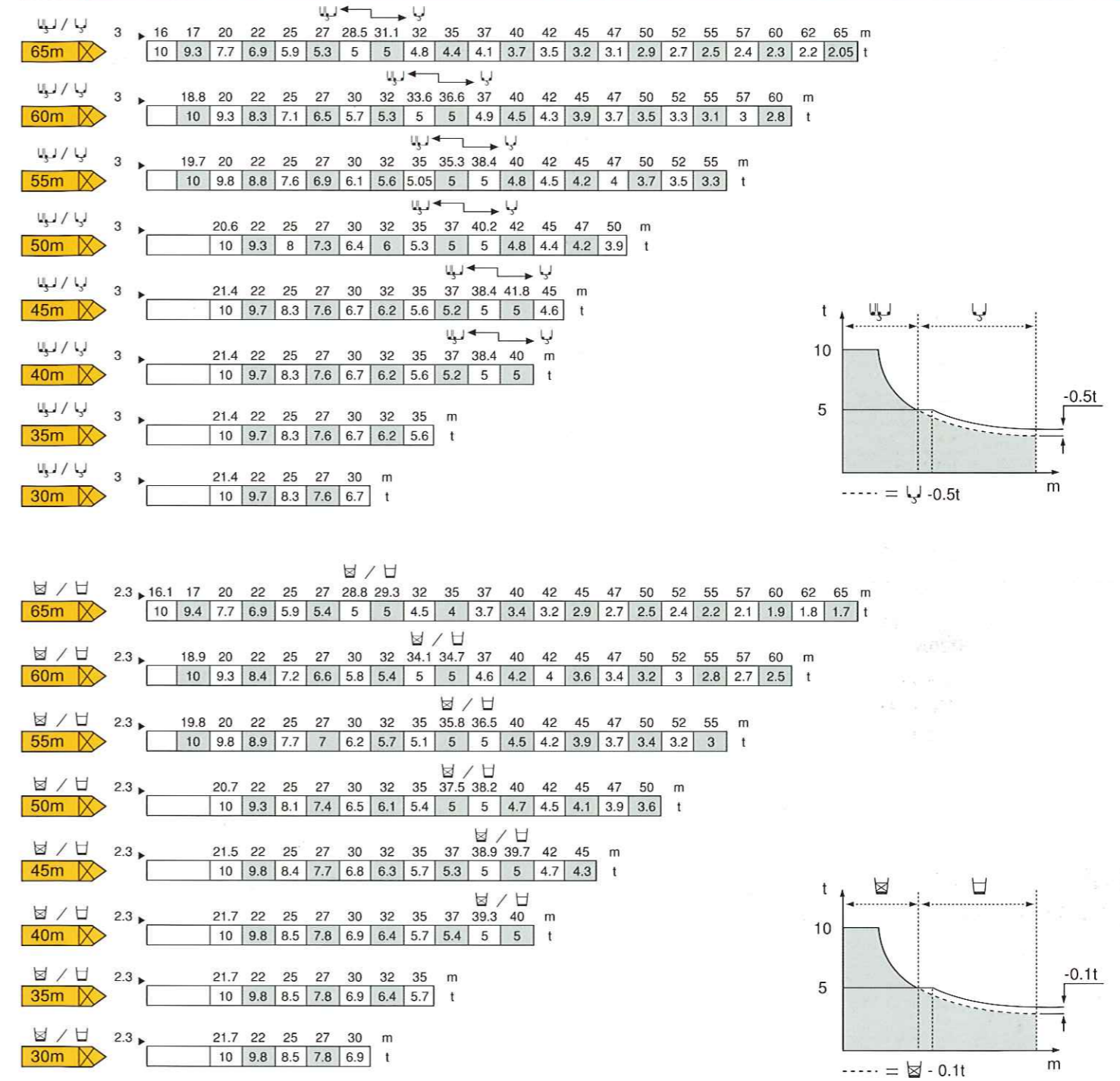
Ref: 2004.01



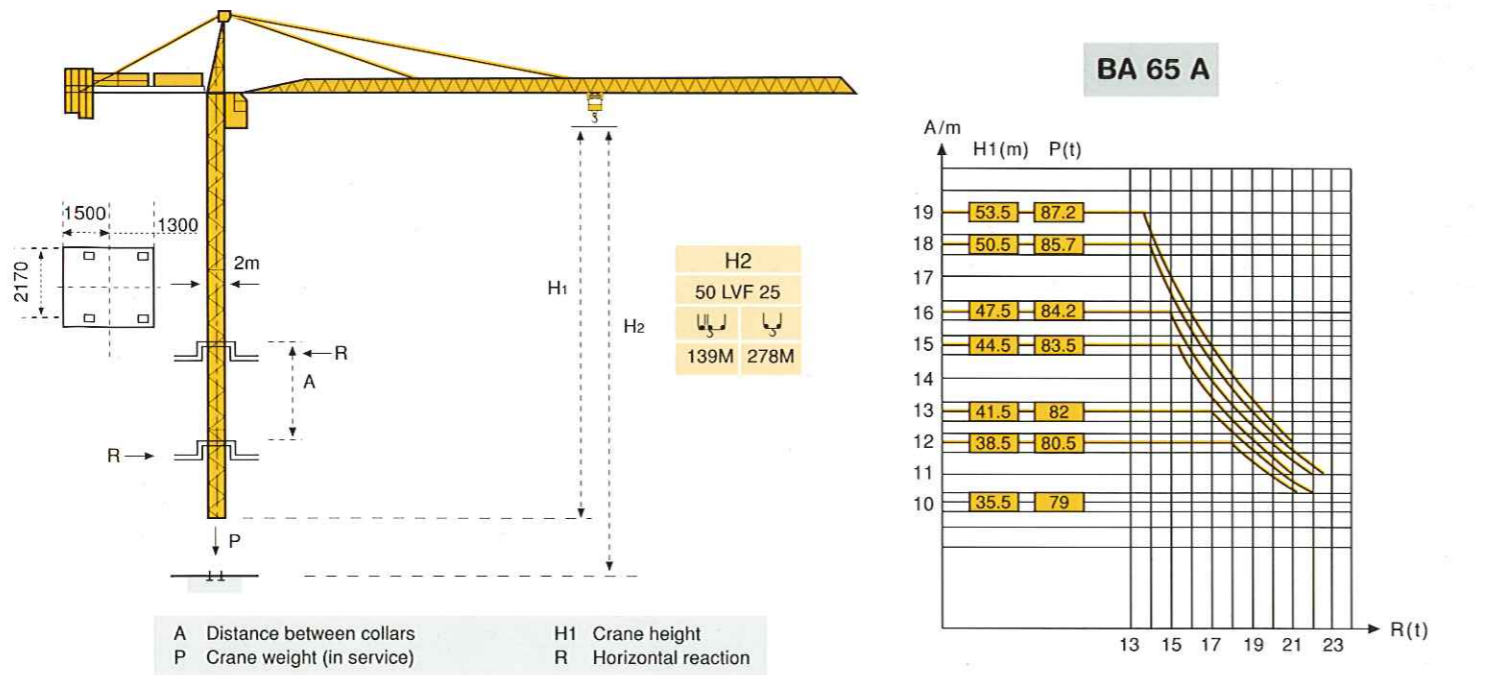
Masts / Reactions



Load diagrams



Climbing crane



Anchorage

