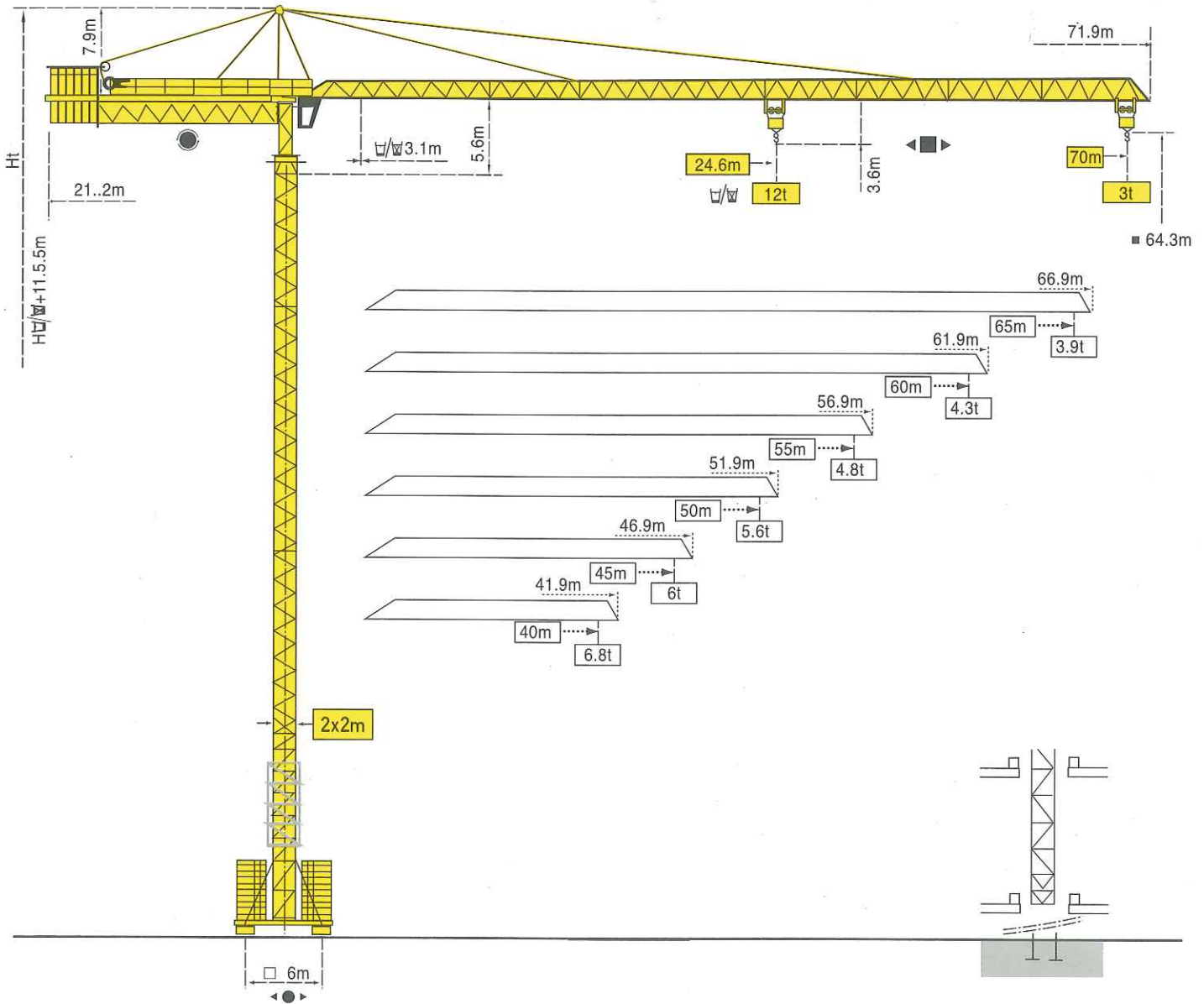
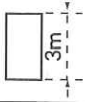


TOPKIT MC 300 C1 K12



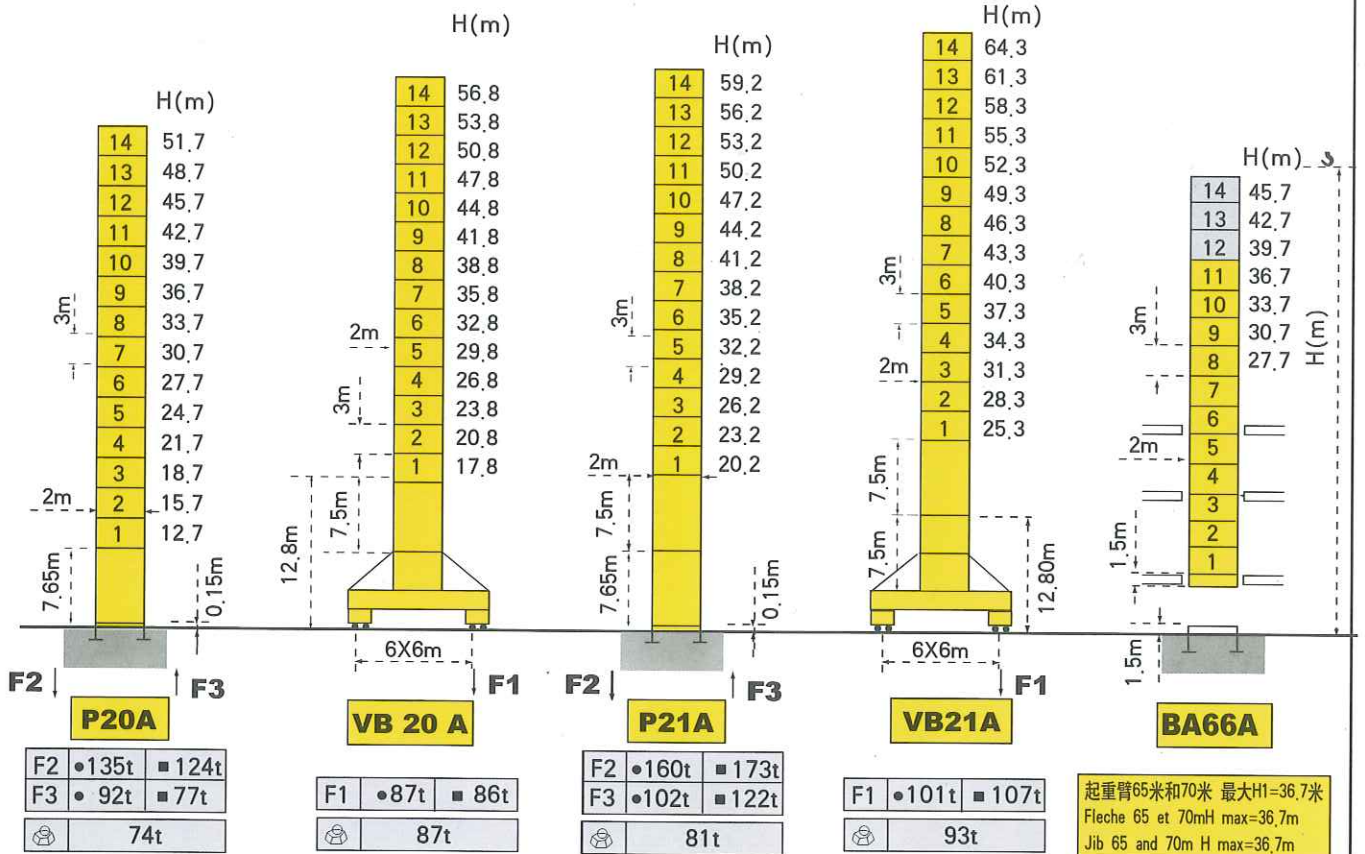
TOPKIT MC300 C1 K12

标准节 - Mats - Masts



2m

起重臂 - Fleche - Jib
40m ⇒ 70m

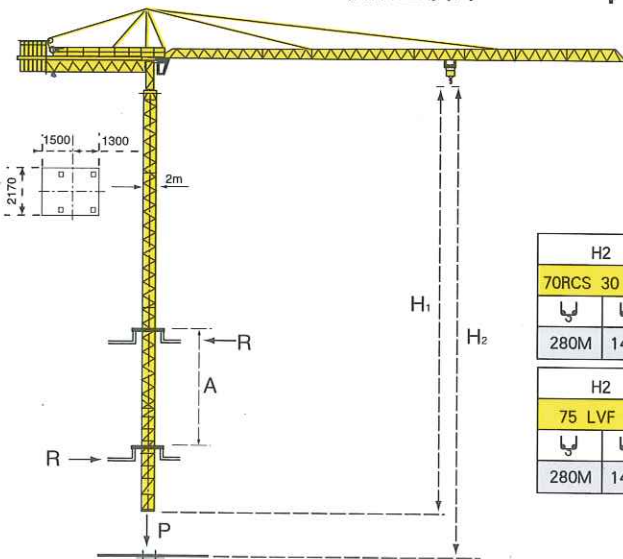


起重臂65米和70米 最大H1=36.7米
Fleche 65 et 70mH max=36.7m
Jib 65 and 70m H max=36.7m

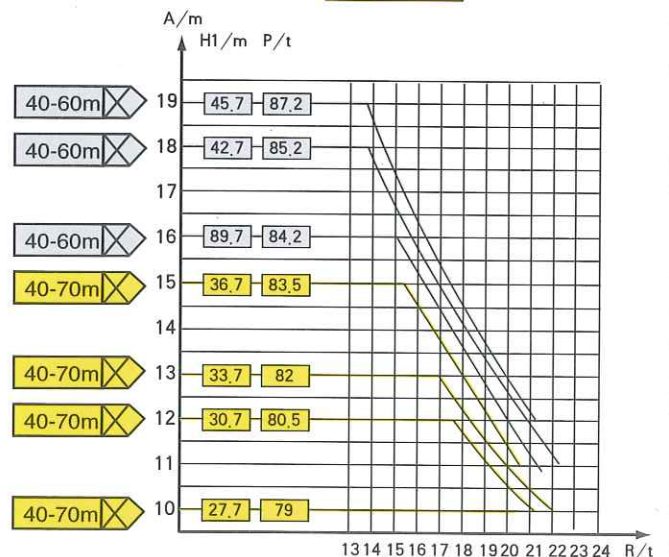
F=反力 - Réactions - Reactions

楼板上顶升 - Télescopage sur dalles - Climbing crane

BA 66 A

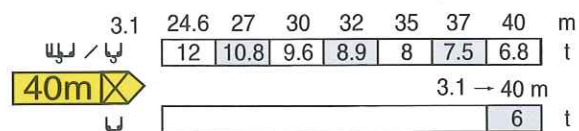
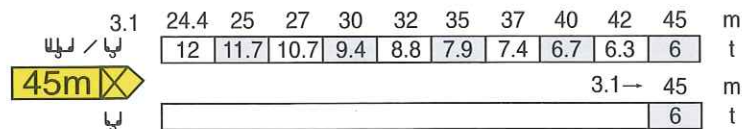
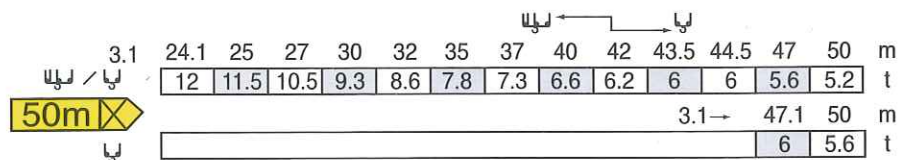
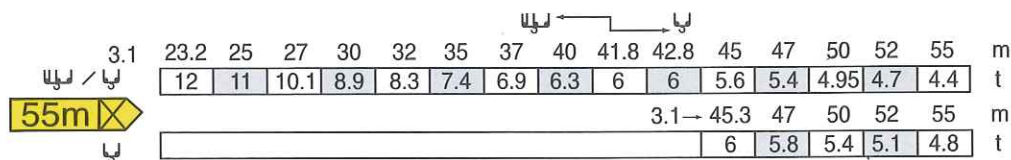
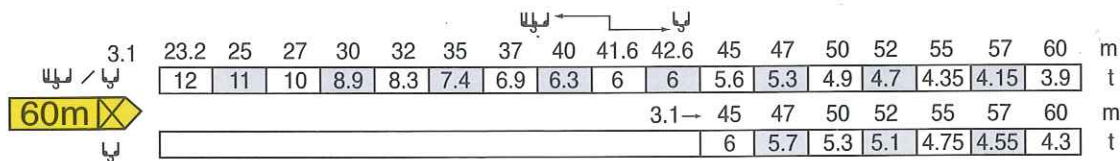
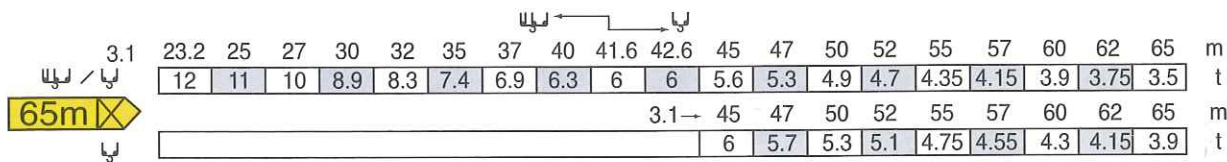
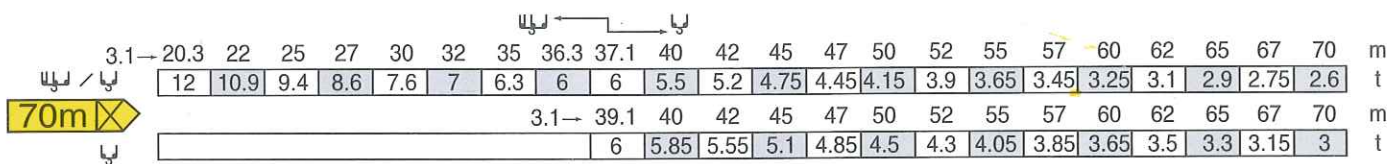


H2	
70RCS 30 VAI	
280M	140M
H2	
75 LVF 30	
280M	140M



- A 各附着框之间距离 / Distance entre cadres / Distance between collars
- H1 塔机高度 / Hauteur grue / Crane height
- P 工作状态塔机重量 / Poids de la grue (en service) / Crane weight (in service)
- R 水平反力 / Reaction horizontale / Horizontal reaction

负荷曲线 - Load diagrams

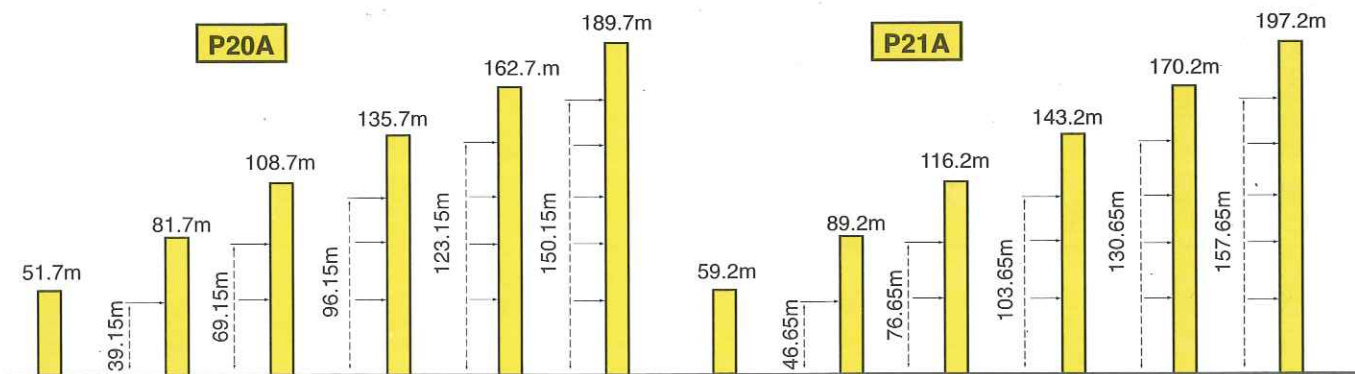


二/四倍率小车 (使用 时, 从 负荷中减去0.2吨)
供选择的仅为二倍率小车

Chariot standard 2/4 brins.
(En cas d'utilisation deduire 0.2 t aux charges)

Standard trolley 2/4 fall.
(When using subtract 0.2 t form the loads).
Potional trolley 2 fall only.

附着 - Ancrages - Anchorages



- 工作状态
- 非工作状态

- En service
- Hors service

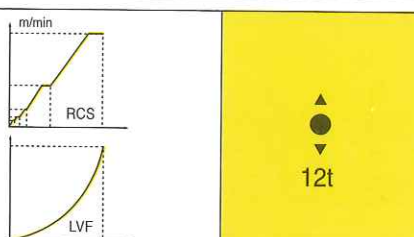
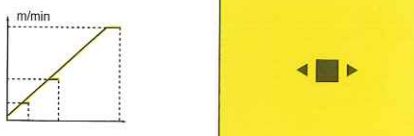
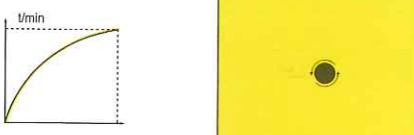

- In service
- Out of service

空载, 无配重, 起重臂和高度均为最大值

A vide sans lest avec fleche ea hauteur maximum.

Without load and ballast with longest jib and maximum height.

机构 - Mechanisms

		m/mim	t	m/mim	t	容绳量	ch-PS hp	kW	
起升 Hoisting		70 RCS30 VAI	$\frac{v}{m}$		$\frac{v}{m}$		565m >565m*	70	51
			0=40	6	0=20	12			
		75 LVF 30	0=41	6	0=20.5	12	570m >570m*	75	55
			0=82	3	0=41	6			
		0=99	1.5	0=49.5	3				
变幅 Trolleying		6 D3 V4		10=80					
回转 Slewing		RTV		0=0.7 tr/min rpm					
行走 Travelling	VB20A VB21A  R ≥ 13m	RT 544 A1 2V		13.5-27					
电网 -- Mains supply		CEI 38 IEC 38		400V(+6%-10%) 50Hz					
所需功率 -- Necessary set		70RCS: 110kVA 75LVF: 110kVA							
发电机组 -- Generator set		*							

* 请向我方咨询 -- Conslut us

修改权在我方 Modifications réservés Subject to modification

波坦公司
POTAIN



禁止复制和翻印 Copyright.Reproduction interdite © POTAIN 2000

市场总部(ADD): 上海市宜山路998号新漕楼305室
 总机(TEL): 021-64955555
 传真(FAX): 021-64852038
 售后服务(SAV): 021-64950099(24小时热线)
 邮编(P.C.): 200233

TOPKIT MC 300 C1 K12

Ref. 2001.02