

TOPKIT MD 235

LEC 6

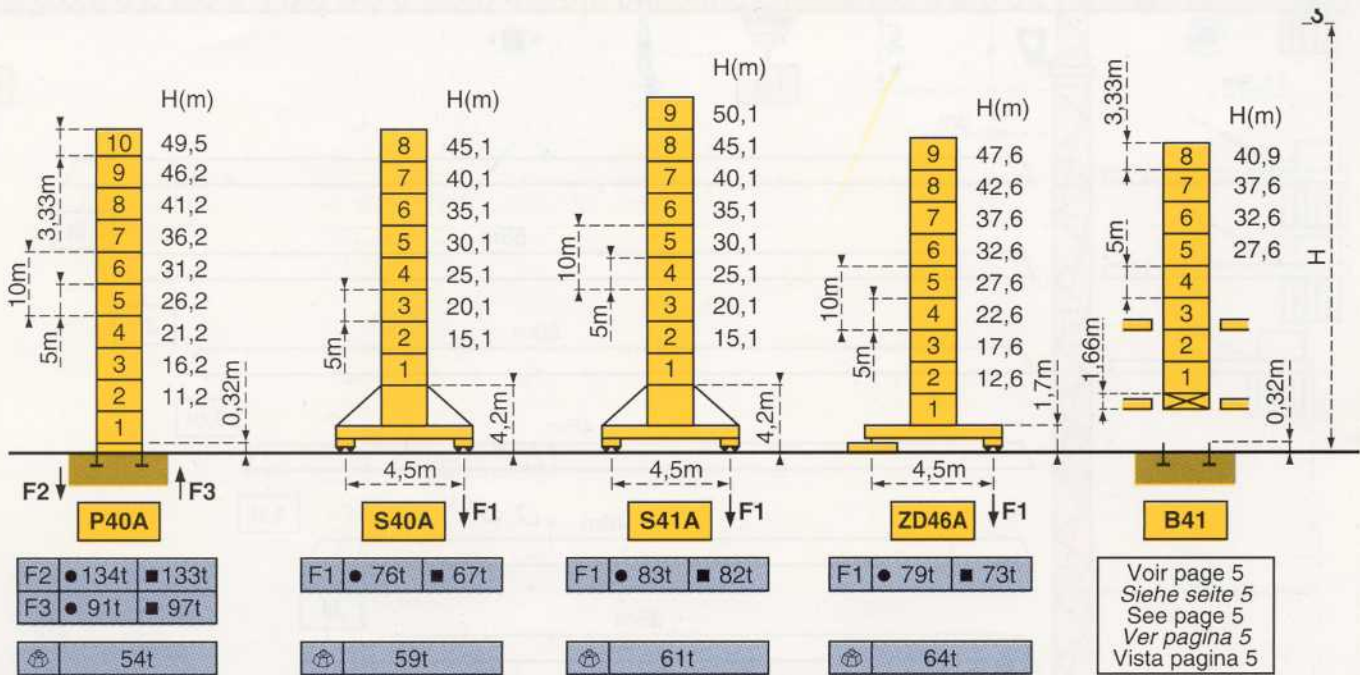


Mats - Maste - Masts - Mástil - Torre



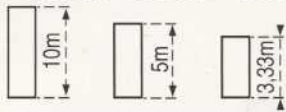
∇ 1,6m
MD 235 G12

Flèche - Ausleger - Jib
Flecha - Braccio
25m → 55m



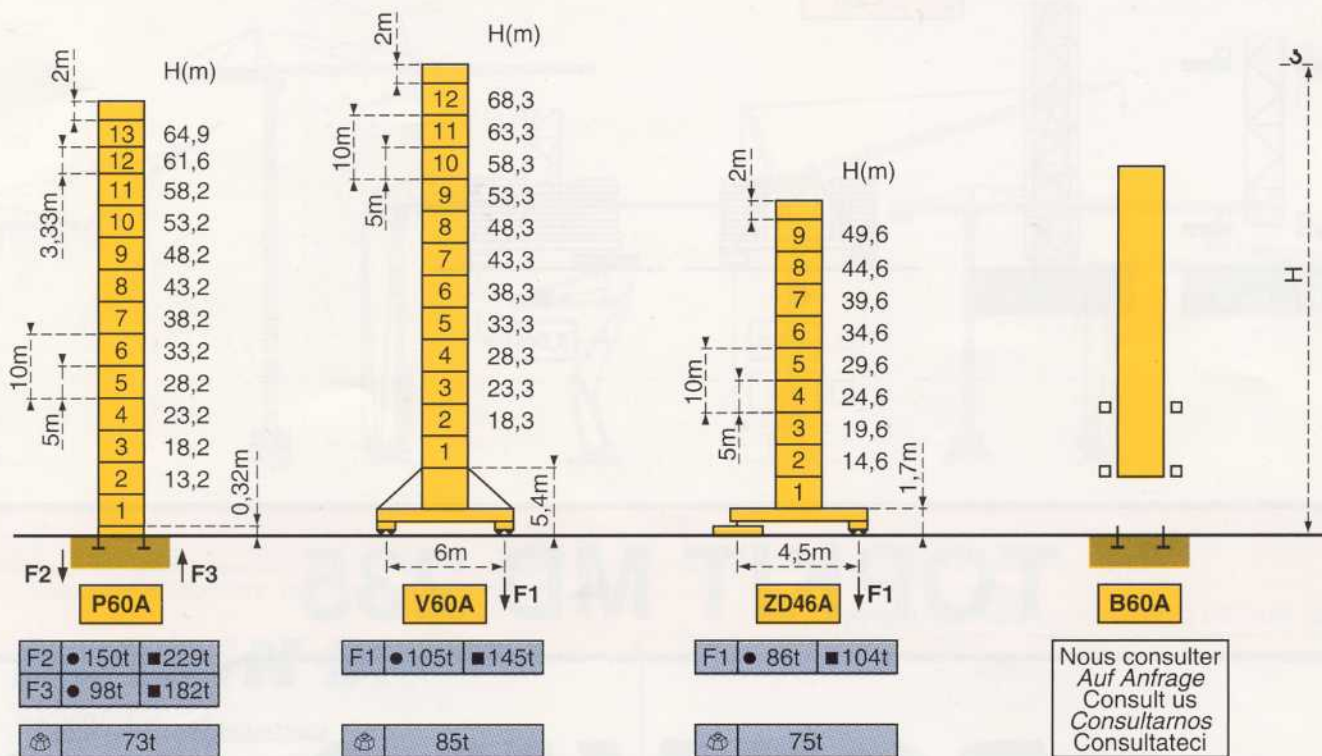
Voir page 5
Siehe Seite 5
See page 5
Ver pagina 5
Vista pagina 5

Mats - Maste - Masts - Mástil - Torre



∇ 2 m
MD 235 J12

Flèche - Ausleger - Jib
Flecha - Braccio
25m → 65m



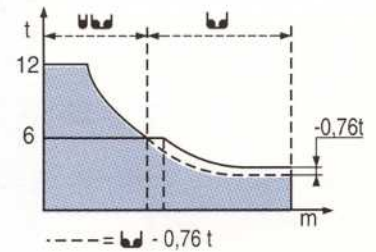
Nous consulter
Auf Anfrage
Consult us
Consultarnos
Consultateci

F = Réactions - Eckdrücke - Reactions - Reacciones - Reazioni

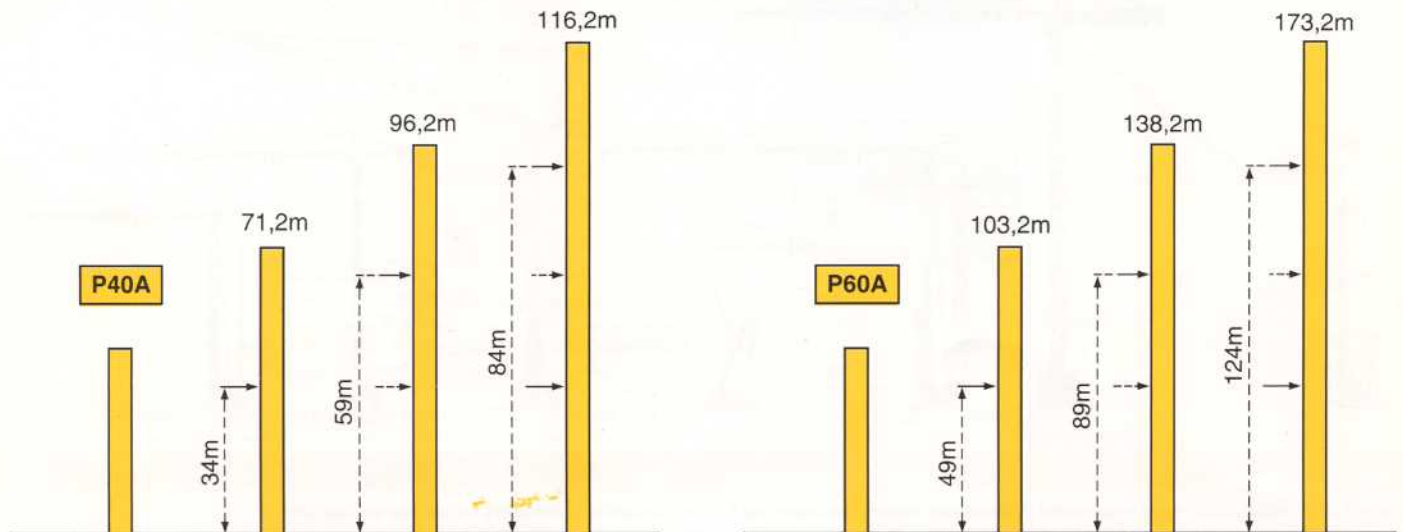
Flèche
Ausleger
Jib
Flecha
Braccio

Courbes de charges - Lastkurven - Load diagrams - Curvas de cargas - Curve di carico

	12,7	15	17	20	22,3	24,6	27	30	32	35	37	40	42	45	47	50	52	55	57	60	62	65	m
65m	12	9,9	8,5	7	6	6	5,4	4,7	4,4	3,9	3,7	3,3	3,1	2,85	2,69	2,47	2,34	2,16	2,06	1,91	1,82	1,7	t
	15,3	17	20	22	25	26,9	29,6	32	35	37	40	42	45	47	50	52	55	57	60				m
60m	12	10,6	8,7	7,8	6,6	6	6	5,5	4,9	4,6	4,2	4	3,6	3,4	3,2	3	2,80	2,67	2,5				t
	16	20	22	25	27	28,3	31,2	35	37	40	42	45	47	50	52	55							m
55m	12	9,3	8,2	7	6,4	6	6	5,2	4,9	4,5	4,2	3,9	3,7	3,4	3,2	3							t
	16,8	20	22	25	27	29,7	32,7	35	37	40	42	45	47	50									m
50m	12	9,8	8,7	7,5	6,8	6	6	5,5	5,2	4,7	4,5	4,1	3,9	3,6									t
	17,4	20	22	25	27	30	30,8	33,9	37	40	42	45											m
45m	12	10,2	9,1	7,8	7,1	6,2	6	6	5,4	5	4,7	4,3											t
	17,6	20	22	25	27	30	31,1	34,2	37	40													m
40m	12	10,3	9,2	7,9	7,2	6,3	6	6	5,5	5													t
	17,6	20	22	25	27	30	31,1	34,2	35														m
35m	12	10,3	9,2	7,9	7,2	6,3	6	6	5,85														t
	17,6	20	22	25	27	30																	m
30m	12	10,3	9,2	7,9	7,2	6,3																	t
	17,7	20	22	25																			m
25m	12	10,4	9,2	7,9																			t



Ancrages - Verankerungen - Anchorages - Anclaje - Ancoraggio



● En service
■ Hors service

● In Betrieb
■ Ausser Betrieb

● In service
■ Out of service

● En servicio
■ Fuera de servicio

● In servizio
■ Fuori servizio

⊗ A vide sans lest
avec flèche et hauteur
maximum.

⊗ Ohne Last und Ballast
mit Maximalausleger und
Maximalhöhe.

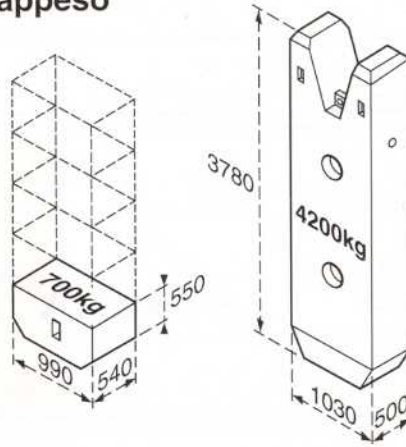
⊗ Without load and
ballast with longest jib
and maximum height.

⊗ Sin carga, sin
lastre con flecha y
altura máxima.

⊗ A vuoto senza zavorra
e con braccio massimo e
altezza massima.

Lest de contre-flèche - Gegenauslegerballast - Counter-jib ballast
Lastre de contra flecha - Contrappeso

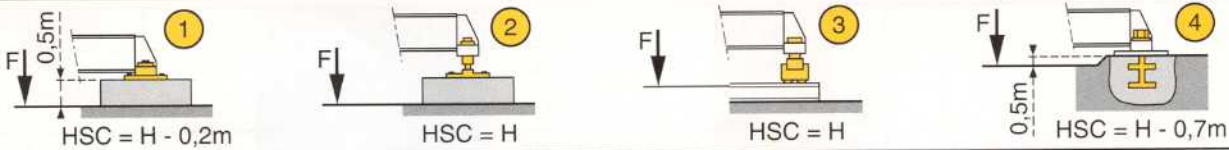
			(kg)
A	65m	14,5m	21 000 = (5x4200)
	60m	14,5m	20 300 = (4x4200)+(5x700)
	55m	14,5m	18 900 = (4x4200)+(3x700)
	50m	12m	23 100 = (5x4200)+(3x700)
	45m	12m	20 300 = (4x4200)+(5x700)
	40m	12m	18 200 = (4x4200)+(2x700)
B	35m	12m	15 400 = (3x4200)+(4x700)
	30m	12m	13 300 = (3x4200)+(1x700)
	25m	12m	10 500 = (2x4200)+(3x700)



Lest de base - Grundballast - Base ballast - Lastre de base - Zavorra di base

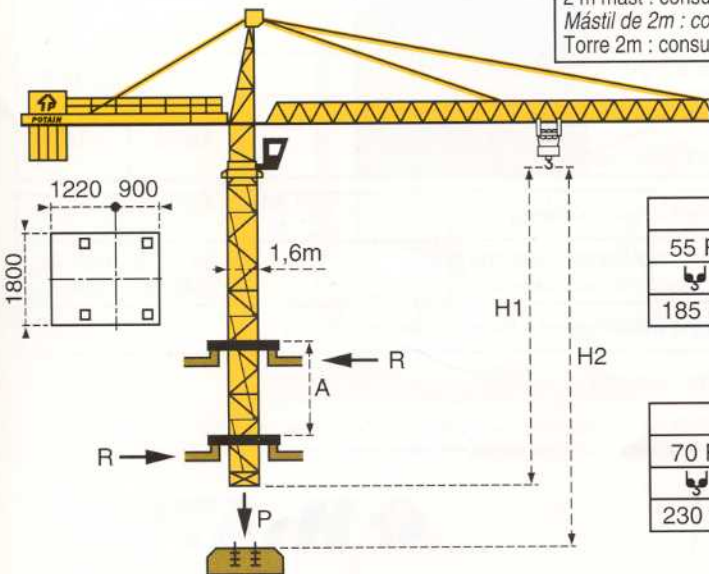
H(m)	A	B	H(m)	A	B	H(m)	A	B	H(m)	A	B	H(m)	A	B			
									68,3	120t	120t						
									63,3	84t	96t						
									58,3	60t	72t						
			50,1	60t	66t	47,6	50t	60t	53,3	48t	48t	49,6	65t	65t			
45,1	60t	66t	45,1	60t	66t	42,6	50t	60t	48,3	24t	36t	44,6	55t	55t			
40,1	60t	66t	40,1	60t	66t	37,6	50t	60t	43,3	24t	36t	39,6	55t	55t			
35,1	60t	66t	35,1	60t	66t	32,6	50t	60t	38,3	24t	36t	34,6	55t	55t			
30,1	60t	66t	30,1	60t	66t	27,6	50t	60t	33,3	24t	36t	29,6	55t	55t			
25,1	60t	66t	25,1	60t	66t	22,6	50t	60t	28,3	24t	24t	24,6	55t	55t			
20,1	60t	66t	20,1	60t	66t	17,6	50t	60t	23,3	24t	24t	19,6	55t	55t			
15,1	60t	66t	15,1	60t	66t	12,6	50t	60t	18,3	24t	24t	14,6	55t	55t			
S 40 A			S 41 A			ZD 46 A			V 60 A			ZD 46 A					
□ 1,6m						□ 2m											

ZD 46 A



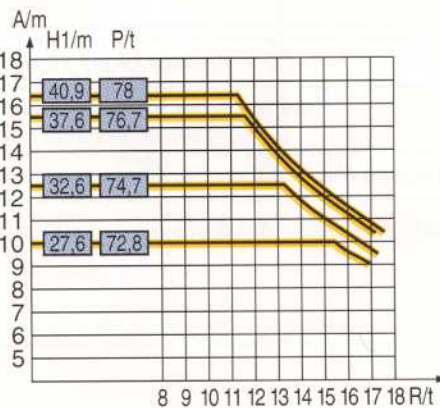
Télescopage sur dalles - Kletterkrane im Gebäude - Climbing crane
Telescopage gruas trepadoras - Gru in cavedio

Mât de 2m : nous consulter
 Mast von 2m : Auf Anfrage
 2 m mast : consult us
 Mástil de 2m : consultarnos
 Torre 2m : consultateci



H2	
55 RCS 30D	
185 m	92 m

H2	
70 RCS 30D	
230 m	115 m



A Distance entre cadres
 H1 Hauteur grue
 P Poids de la grue (en service)
 R Réaction horizontale

A Abstand zwischen den Rahmen
 H1 Kranhöhe
 P Krangewicht (in Betrieb)
 R Horizontalkräfte


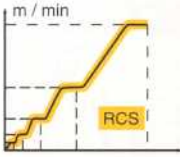


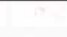
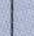
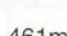
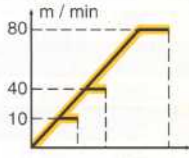
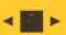
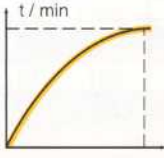

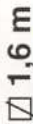




A Distance between collars
 H1 Crane height
 P Crane weight (in service)
 R Horizontal reaction

A Distancia entra marcos
 H1 Altura grúa
 P Peso de la grúa (en servicio)
 R Reaccion horizontal

A Distanza fra i telai
 H1 Altezza gru
 P Peso della gru (in servizio)
 R Reazione orizzontale

POTAIN TOPKIT MD 235

Mécanismes - Antriebe - Mechanisms - Mecanismos - Meccanismi

			m/min	t	m/min	t		ch -PS hp	kW	
Leverage Heben Hoisting Elevación Sollevamento		 12t	55					370m >370m*	55 40,5	
			RCS	0 → 34	6	0 → 17				12
			30D	0 → 68	3	0 → 34				6
			70					461m >461m*	70 51	
RCS	0 → 40	6	0 → 20	12						
30D	0 → 80	3	0 → 40	6						
Distribution Katzfahren Trolleying Distribución Ditrribuzione			6 D3 V4	10-40-80				6	4,4	
Orientation Schwenken Slewing Orientación Rotazione			RCV 185	0 → 0,8 tr/min rpm				2x9	2x6,6	
Translation Kranfahren Travelling Traslación Traslazione	 1,6 m	 S 40 A R ≥ 10m	RT 324	12,5 - 25				2x7	2x5,2	
			TCV 449 ARC H ≤ 35,1m	10 - 50				4x6,8	4x5	
		 S 41 A R ≥ 10m	RT 443 A1 2V	15 - 30				4x5	4x3,7	
			TCV 449 ARC H ≤ 35,1m	10 - 50				4x6,8	4x5	
		 ZD 46 A	RT 443 A1 2V	15 - 30				4x5	4x3,7	
			 V 60 A R ≥ 13m	RT 544 A1 2V	13,5 - 27				4x7	4x5,2
TCV 649 ARC H ≤ 43,3m	10 - 50					4x6,8	4x5			
Réseau - Netzstrom - Mains supply - Red - Rete elettrica							CEI 38 IEC 38	400V(+6%-10%) 50 Hz		
Puissance électrique nécessaire - Anschlusswert - Necessary electric power Potencia eléctrica necesaria - Potenza elettrica necessaria								55 RCS : 80KVA 70RCS : 105KVA		
Groupe électrogène - Stromaggregat - Generator set - Grupo electrogeno - Gruppo elettrogeno								*		

*Nous consulter - Auf Anfrage - Consult us - Consultarnos-Consultateci

Conforme aux directives CEE 84/534 et 87/405 sur le niveau acoustique - Gemäss EWG-Richtlinien 84/534 und 87/405 für den Schall- Leistungspegel
 In compliance with the EEC 84/534 and 87/405 Instructions on noise level - Conforme con las directivas CEE 84/534 y 87/405 sobre el nivel acustico
 Conforme alle direttive CEE 84/534 e 87/405 sul livello acustico





Modificaciones reservadas Subject to modification Änderungen vorbehalten Modifications réservées Printed in France Modifiche riservate

Document pour usage commercial uniquement - Benutzung dieser Unterlagen nur für Verkaufszwecke - Document for commercial use only -
 Documento para uso comercial unicamente - Documento per uso commerciale solamente

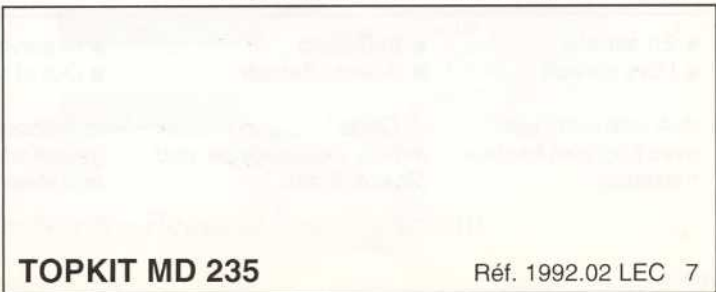
Copyright.Reproduction interdite © POTAIN 1992

POTAIN 

GRUPE LEGRIS INDUSTRIES

18.Rue de Charbonnières, B.P. 173-F 69132 ECULLY Cedex
 Tél. (33)04.72.20.20.20 - Fax (33)04.72.20.20.00

POTAIN GmbH	Deutschland	Tel : 06.105.704.0
POTAIN U.K.	Great Britain	Tel : 0895.44.52.61
Simma POTAIN	Italia	Tel : 02.97.96.71
POTAIN Portugal	Portugal	Tel : 02.968.08.89
POTAIN Belgium	Belgique	Tel : 15.42.08.80
Zhangjiagang POTAIN	China	Tel : 520. 877.451



TOPKIT MD 235

Réf. 1992.02 LEC 7

Réalisation SODIFE