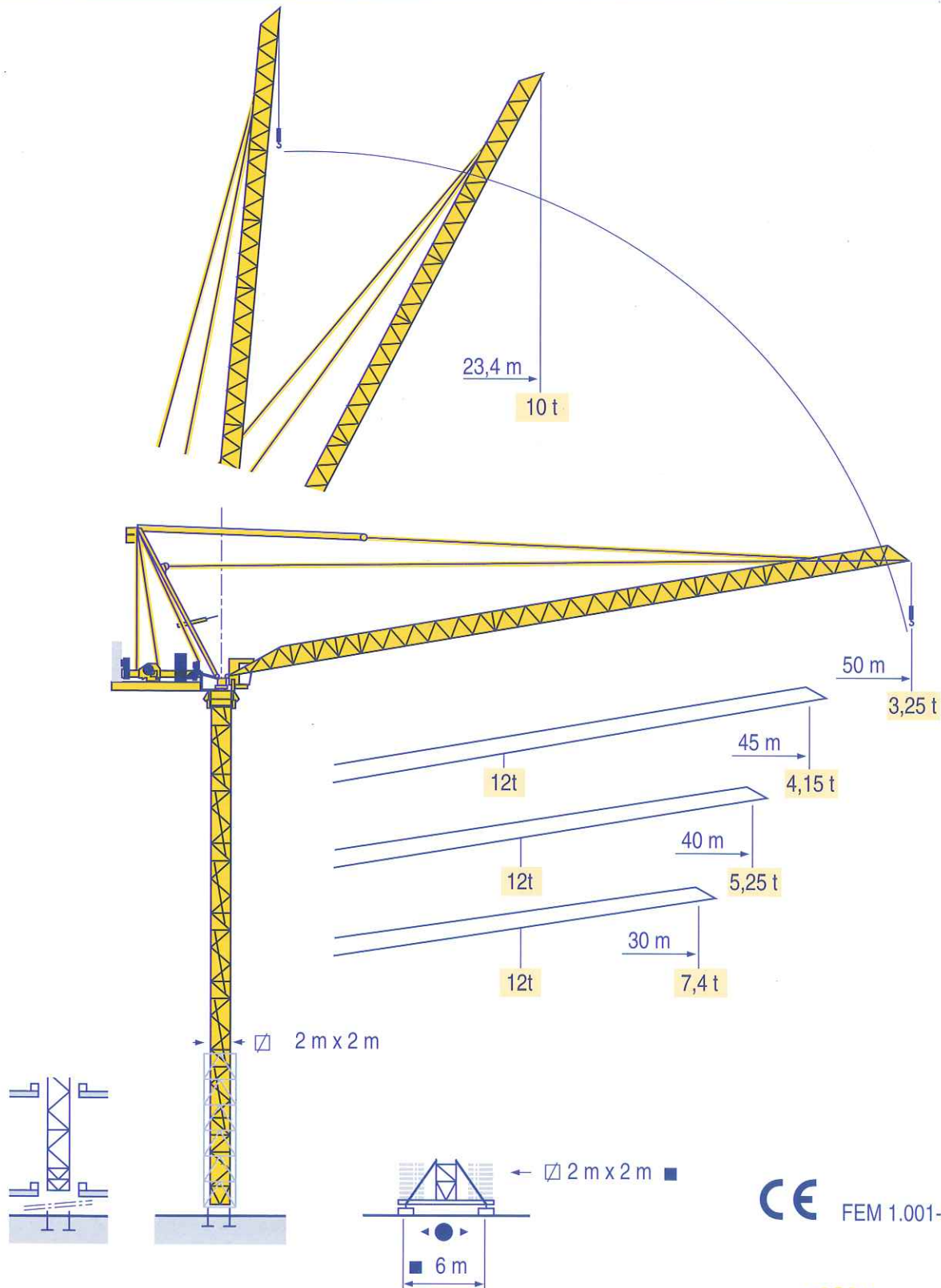


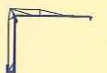
MR 220



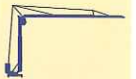
HD
HDM



HDT



GTRM



CITY CRANE



TOPKIT MD
MAXI MD



MAXI TOPKIT



Topless MDT



MR



CE FEM 1.001-A3



LRD 1

POTAIN

Mat / Réactions
 Maste / Eckdrücke
 Télescopable 2 m
 Teleskopierbar 2 m

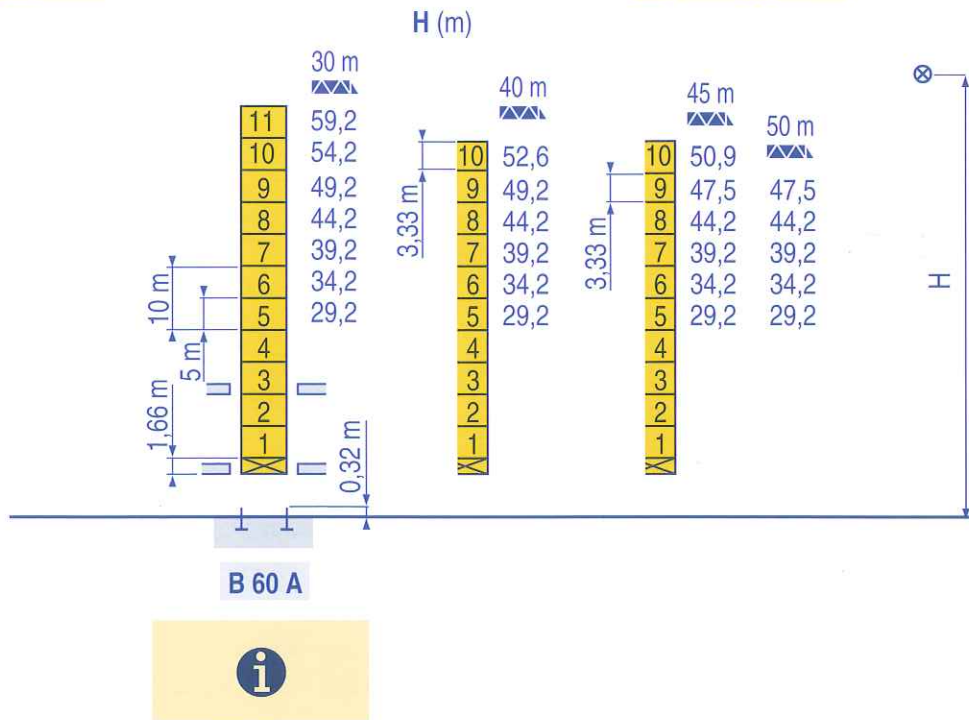
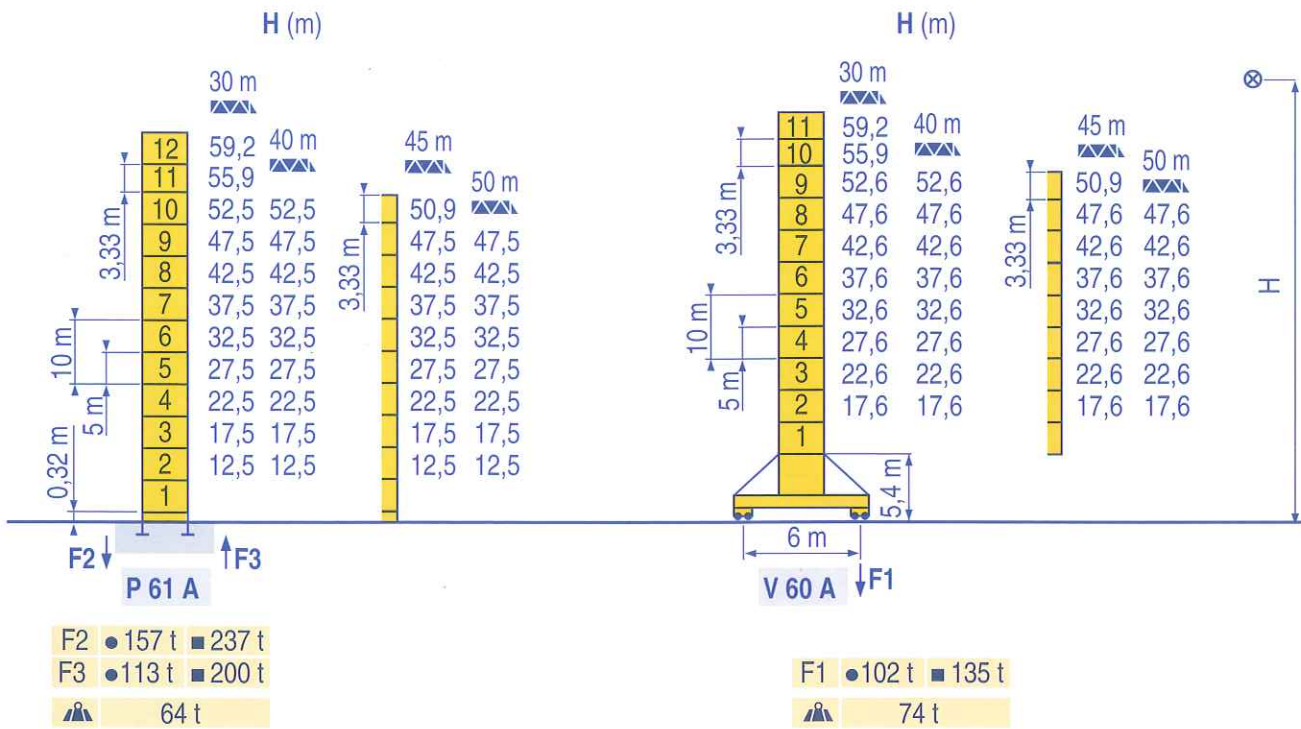
F
 D
 F
 D

Masts / Reactions
 Mástil / Reacciones
 Telescopic 2 m
 Telescopico 2 m

GB
 E
 GB
 E

Torre / Reazioni
 塔身 / 反力
 Telescopico 2 m
 可顶升 2 m

I
 C
 I
 C



LRD 2

i Nous consulter
 ● Réactions en service
 ■ Réactions hors service
 ▲ A vide sans lest (ni train de transport) avec flèche et hauteur maximum.

F Consult us
 Reactions in service
 Reactions out of service
 Without load, ballast (or transport axles), with maximum jib and maximum height.

GB Consultateci
 Reazioni in servizio
 Reazioni fuori servizio
 A vuoto, senza zavorra (ne assali di trasporto) con braccio massimo e altezza massima.

i Auf Anfrage
 ● Reaktionskräfte in Betrieb
 ■ Reaktionskräfte außer Betrieb
 ▲ Ohne Last, Ballast (und Transportachse), mit Maximalausleger und Maximalhöhe.

D Consultarnos
 Reacciones en servicio
 Reacciones fuera de servicio
 Sin carga, sin lastre, (ni tren de transporte), flecha y altura máxima.

E 请向我方咨询
 工作状态下的反应
 非工作状态下的反应
 空载无压重也无运输车
 有吊臂和最大高度

Courbes de charges
Lastkurven



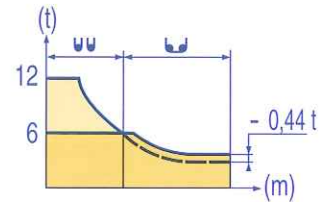
Load diagrams
Curvas de cargas



Curve di carico
负荷曲线



50 m	4	▶	23,4	25	27	30	32	35,1	37	38,2	40	42	45	47	50 m
			10	9,1	8,1	6,9	6,2	-	5,3	5	4,6	4,2	3,7	3,4	3 t
								6	5,5	-	4,9	4,5	4,0	3,7	3,25 t
45 m	4	▶	20,7	22	25	27	30	32	34,9	35,9	37	40	42	45 m	
			12	11,1	9,3	8,3	7,1	6,4	6	-	5,5	4,8	4,4	3,9 t	
									6	5,7	5,1	4,7	4,15 t		
40 m	3	▶	21,2	22	25	27	30	32	35,8	36,8	37	40 m			
			12	11,4	9,6	8,6	7,4	6,7	6	-	5,7	5 t			
									6	5,9	5,25 t				
30 m	3	▶	21,2	22	25	27	30 m								
			12	11,5	9,7	8,7	7,4 t								
						6 t									



LRD2

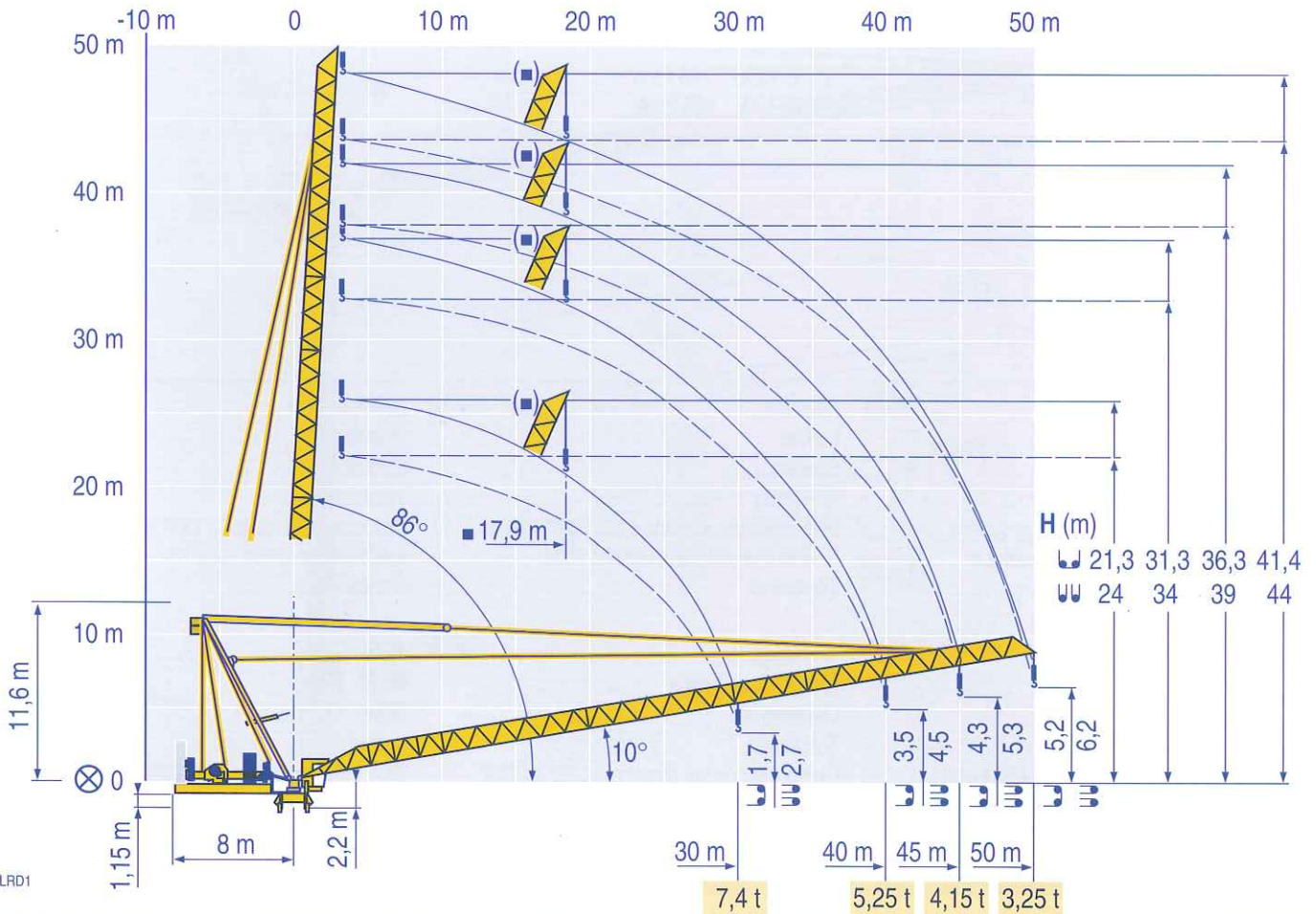
Flèche relevée
Ausleger in Steilstellung



Luffing jib
Flecha izada




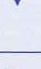








Braccio impennato
起升吊臂



LRD1

- ⊗
■
⊗
■
- Axe articulation flèche
Jib hinge shaft
Asse cerniera braccio
Libera rotazione
- Position girouette
Weathervaning position
Eje articulación de flecha
Posición eleta
- Auslegergelenkachse
吊臂铰接销轴
风向标状态

				U U		ch - PS hp	kW						
	55 RCS 30	m/min	0 → 33	0 → 66	0 → 16,5	0 → 33	55	40,5	370 m > 370 				
		t	6	3	12	6							
	75 LVF 30	m/min	5 → 13 → 41 → 55 → 82 → 99			2,5 → 6,5 → 20,5 → 27,5 → 41 → 49,5		75	55	601 m > 601 			
		t	6	6	6	4,5	3				1,5	12	12
	75 VBR 30		2 min					75	55				
	RCV 185	tr/min U/min rpm	0 → 0,71					2 x 9	2 x 6,6				
	RT 544 A1 2V	m/min	13,5 - 27					4 x 7	4 x 5,2				
CEI 38 	IEC 38	kVA											
400 V (+6% -10%) 50 Hz		55 RCS : 140 kVA 75 LVF : 160 kVA		84/534 - 87/405									

LRD 2

   	Levage Relevage Orientation Translation Conforme aux directives CEE 84/534 et 87/405 sur le niveau acoustique Nous consulter	F	Hoisting Luffing Slewing Travelling In compliance with the EEC 84/534 and 87/405 Instructions on noise level Consult us	GB	Sollevamento Brandeggio Rotazione Traslazione Conforme alle direttive CEE 84/534 e 87/405 sul livello acustico Consultateci	I
	   	Heben Ausleger-Einziehen Schwenken Kranfahren Gemäss EWG-Richtlinien 84/534 und 87/405 für den Schall-Leistungspegel Auf Anfrage	D	Elevación Elevación de flecha Orientación Traslación Conforme con las directivas CEE 84/534 y 87/405 sobre el nivel acustico Consultarnos	E	起升 升降 回转 行走 符合 CEE 84/534 - CEE 87/405 声晌度规定 请向我方咨询

POTAIN 
GRUPE LEGRIS INDUSTRIES

18.Rue de Charbonnières, B.P. 173
F-69132 ECULLY Cedex
Tél. (33)04.72.18.20.20
Fax (33)04.72.18.20.00
http://www.potain.com
E-mail : mkt@potain.fr

MR 220

Copyright.Reproduction interdite © POTAIN 1999

Deutschland
POTAIN GmbH Tel : 06.105.704.0
Italia
POTAIN S.p.A. Tel : 0.331.49.33.11
Singapore
POTAIN PTE LTD Tel : (00.65) 227.1550